

Technical specifications

The **C.A 7041 MEASURER** performs all measurement operations and stores the results

- Liquid crystal display (71 x 46 mm) (graphic type 192 x 128 pixels)
- Backlit display with automatic deactivation if idle for more than 5 minutes
- Configuration by means of a 23-key alphanumeric keypad
- Memory capacity: 1700 complete tests in automatic mode

The **C.A 7042 RESPONDER** performs, at the other end of the link, all the loop operations required to measurements.

- 4-electroluminescent diode display
- Activated and deactivated by the "Measurer"

COMMON CHARACTERISTICS

- Portable units with internal removable Ni-mH battery pack
- Autonomy: 8 to 10 hrs.
- The instrument comes with a battery charger
- Charging time: 3 hrs
- Can operate on 230 V, 50 Hz mains supply
- Presentation: ABS casing, in elastomer enclosure
- Dimensions: 260 x 144 x 60 mm
- Weight: approx. 1.1 kg each
- Built-in intercom

Test functions up to Cat.6/Class E

- **Detection of parasitic voltage**
Accuracy: $\pm 0,1$ V
- **NEXT, Power-sum NEXT,**
- **Attenuation,**
- **Elfext, Power-sum Elfext,**
- **ACR, Power-sum ACR**
- **Return loss**
Accuracy: TIA level III
- **Length**
Range: 0-300 m
Accuracy: ± 0.30 m
- **Propagation time**
Accuracy: ± 10 ns
- **Loop resistance**
Range: 0 to 2000 Ω
Accuracy: ± 0.5 Ω
- **Cabling**

Connections

- **Power supply:** 3.5 mm jack
- **Intercom:** stereo jack
- **RS 232:** SUBD 9

Links tested

- **Copper:** Coaxial - UTP, FTP (ScTP), STP, SFTP, SSTP

To order

■ **CERTILAN C.A 7040**P01.1293.01
Composed of a C.A. 7041 measurer and a C.A. 7042 responder with protective housing and carrying case, two mains chargers, two RJ45 Cat 5E cables, one intercalibration cable, two RJ45 female adapters, one RS232 cord, CERTISOFT certification software and a user's manual.

Accessories:

BNC Coupler	P01.1019.69
Headphones X2	P01.1019.70
"Cigarette-lighter" charge lead	P01.2951.93
INFRA+ Cat 5 (1.5m) lead	P01.2951.94
POUYET Cat 5 (1.5m) lead	P01.2951.95
COREL + Cat 5 (1.5m) lead	P01.2951.96
ALCATEL RJ45 Cat 6 (1.5m) lead	P01.2951.97
ALCATEL RJ45 Cat 6 Female adapter - (7cm)	P01.2951.98
INFRA+ RJ45 Cat 6 (1.5m) lead	P01.2951.99
INFRA+ RJ45 Cat 6 Female adapter (7cm)	P01.2952.01
R&M RJ45 Cat 6 (1.5m) lead	P01.2952.02
R&M RJ45 Cat 6 Female adapter (7cm)	P01.2952.03
AMP RJ45 Cat 6 (1.5m) lead	P01.2952.04
AMP RJ45 Cat 6 Female adapter (7cm)	P01.2952.05
PANDUIT RJ45 Cat 6 (1.5m) lead	P01.2952.06
PANDUIT RJ45 Cat 6 Female adapter (7cm)	P01.2952.07



Your distributor

TEST & MEASUREMENT DIVISION

France
190, rue Championnet - 75876 PARIS CEDEX 18
Tél : (33) 01 44 85 44 85
Fax : (33) 01 46 27 73 89
e-mail : info@chauvin-arnoux.fr
www.chauvin-arnoux.fr

UNITED KINGDOM
Waldeck House - Waldeck Road
MAIDENHEAD SL6 8BR
Tél : 01628 788 888
Fax : 01628 628 099
e-mail : info@chauvin-arnoux.co.uk
www.chauvin-arnoux.co.uk

 **CHAUVIN
ARNOUX**

Does your LAN network
comply with standards?

Check it with your **CERTI LAN!**






C.A 7040

LAN Tester



Up to
Cat.6/ClassE



- Certification of cable network compliance with international standards
- Measurement frequency from 1 to 300 MHz
- Menus in French  English  German 
Italian  Spanish 
- Extensive memorisation capacity
- Copper and optical links
- CERTISOFT: PC processing software

C.A. 7041 Measurer

**A complete solution
to certify
of the network**

- ▶ **Performs Tests**
- ▶ **Stores the results**

LCD screen

Displays menu, text and graphic results, indicating date and time, battery status and the name of the test site.

Function keys

Several intermediary controls are displayed during configuration. Access is obtained by pressing on the corresponding key.

Navigator

Choice of various functions proposed.

AUTOmatic Mode key

Automatic run-on sequence of the multiple verification tests of all the LAN network links. When the tests are complete, the CERTILAN indicates "Compliance or "Non-Compliance" of the network with the selected certification standard.

Alphanumeric Keypad

Edit keys for modifying parameters.



The practical intercom function to communicate on either side of the network when taking remote measurements!

Built-in intercoms



EXPERT Mode

In EXPERT mode, the CERTILAN takes each measurement individually. This mode also enables the propagation speed (NVP) and the characteristic impedance of a cable (Zc) to be determined.

Site configuration

Ten sites, each corresponding to a given installation, are accessible at all times in order to memorise up to 1700 complete tests.

Intercalibration

Calibration control between the Measurer and the Responder, in order to ensure maximum measurement accuracy

Result recall

Recall of numerical or graphic results of tests stored in AUTO or EXPERT modes

Identification/Maintenance

Recording of the address of a responder, for example when several instruments are used simultaneously. Updating of the internal software.

General configuration

Setting the parameters which appear in the certification report: user, company, date/time and length units, choice between 5 different languages.

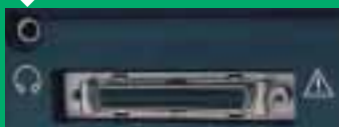


Connectors

RS 232 input to import measurement results using a PC



Headphone input

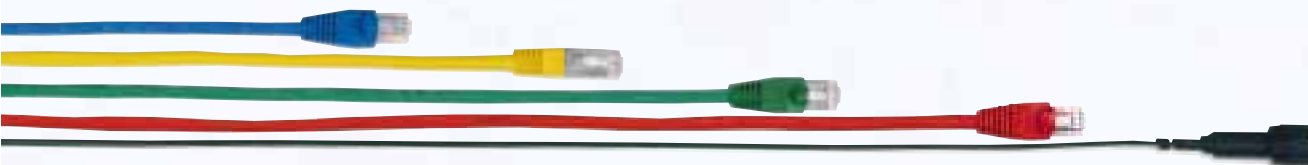


SubD 50-point connector, used to connect measurement adapters

Charge indicator



Charge indicator and built-in battery charge connector



series of tests
compliance
network.



C.A. 7042 Responder

**Performs end-of-line
looping**

**Compliance
or non-compliance indicators**

"Pass" or "Fail" lights flash rapidly indicating compliance or non-compliance of the network tested.

 **Battery indicator**

Indicates that the batteries need recharging. A charger is provided for this purpose as a standard item.

 **Voltage presence warning indicator**

Detection on the link of voltage liable to distort measurement accuracy.

The parameters tested

- Parasitic voltage
- NEXT/ Power sum NEXT
- ELFEXT/ Power sum ELFEXT
- ACR/ Power sum ACR
- Attenuation / Return Loss
- Length / Propagation time
- Loop resistance / Cabling

The Certification Standards

TIA/EIA 568Cat. 3/5/E and Cat.6
ISO 11801 ClaseC/D and E
EN 50173 ClaseC/D and E

IEEE 802.3

Ethernet:

10 Base 2,5, and T

100 BaseTx

1000 Base T

Token Ring: 4Mb and 16Mb

IEEE 802.5

AS/NZS 3080

ATM 155

Software
that is easy to install and use
(included with
standard model)



**Results
are
easy to use
thanks to the
CERTISOFT
software**

Importing the results of tests stored by the measurer under Windows®, is an easy task (up to 1700 complete site tests).
With CERTISOFT – installed in a few minutes - data can be processed immediately.

**Information is imported from the measurer
to the computer via an RS 232 serial link.**

Two modes for exploitation are available:

Certification mode

For the complete measurement results of one or several sites: presentation for the overall acceptance of an installation.

Graphic mode

For individual measurements: display of all the curves of NEXT / ELFEXT, ACR (and Power Sums), Return Loss... according to the frequency.

