

EUROPE'S LARGEST SELECTION OF TEST & MEASUREMENT EQUIPMENT FOR HIRE

INLEC.COM

DATA-SHEET



Nationwide Low Call
0333 6000 600

WHY BUY
WHEN YOU CAN HIRE

Portable Pressure Calibrators

- Ranges 0 to 2.5 mbar through to 700 bar
- Accuracy 0.025% FS all ranges
- Integral combined pressure/vacuum pump
- Dual readout
- 4 to 20 mA loop test facility
- RS 232 interface and fully documenting version
- Intrinsically safe version



DPI 610/615 Series

Portable Pressure Calibrators

SETTING THE STANDARD FOR PORTABLE PRESSURE CALIBRATORS

The technically advanced Druck DPI 610 and DPI 615 portable calibrators are the culmination of many years of field experience with the company's DPI 600 series.

These self-contained, battery powered packages contain a pressure generator, fine pressure control, device energising (not IS version) and output measurement capabilities, as well as facilities for 4 to 20 mA loop testing and data storage. The rugged weatherproof design is styled such that the pressure pump can be operated and test leads connected without compromising the visibility of the large dual parameter display. The mA step and ramp outputs and a built-in continuity tester extend the capabilities to include the commissioning and maintenance of control loops.

Intrinsically Safe versions are available as complete maintenance tools and portable calibration standards for pressure instruments and control loops in hazardous 'Zoned' areas. Certified to BASEEFA and CENELEC standards, the DPI 610IS and DPI 615IS can reduce response times to breakdowns and emergencies by removing the need for 'Hot Permits' and gas detection equipment. This gives peace of mind to all those responsible for safety within hazardous areas.

A highly accurate and easy to use calibrator is only part of the solution for improving overall data quality and working efficiency. The DPI 610 and DPI 615, with data storage and RS 232 interface, reduce calibration times and eliminate data recording errors. The DPI 615 also provides error analysis for field reporting of calibration errors and pass/fail status. In addition, procedures downloaded from a PC automatically configure the DPI 615 to pre-defined calibration and test routines.

Improved performance

The DPI 610/615 series combine practical design with state of the art performance, summarised as follows:

Accuracy:	0.025% FS for ranges 70mbar to 700mbar
Ranges:	2.5 mbar to 700 bar including gauge, absolute and differential versions
Integral pneumatic pressure source:	-850 mbar to 20 bar
Integral hydraulic pressure source:	0 to 400 bar
Measure:	Pressure, mA, V, switch state (open/closed) and ambient temperature
Output:	Pressure, mA step, mA ramp, mA value
Energising supplies:	10 and 24 Vdc (not IS version)
Data storage:	10,000 values
Documenting (DPI 615 only):	Error analysis with pass/fail status and graphs. Two way PC communication for transferring procedures and results.
Remote pressure sensors:	Up to 10 digitally characterised sensors per calibrator.

Simplified operation

Druck's knowledge of customer needs, combined with innovative design, results in high performance, multi-functional calibrators which are simple to use. The key to simple operation is the Task Menu. Specific operating modes such as P-I, switch test and leak test are configured at the touch of a button by menu selection.

Featuring highly reliable pneumatic and hydraulic assemblies and self-test routines, the DPI 610/615 series can be relied upon time and time again for field calibration in the most extreme conditions.

DPI 610/615 Series

Applications

DPI 610/615 PORTABLE PRESSURE CALIBRATORS

The DPI 610 and DPI 615 have been designed for ease of use whilst meeting a wide range of application needs including calibration, maintenance and commissioning. The Intrinsically Safe versions are certified to European and North American standards for use in hazardous areas.

The dual parameter display shows the **INPUT** and **OUTPUT** values in large clear digits. A unique integral handle provides a secure grip for on-site use in addition to a shoulder strap which is also designed to allow the instrument to be suspended for hands-free operation.

Any technician can use these calibrators without formal training, such as a novice on an emergency call out, or those familiar with the DPI 601. By selecting basic mode the calibrator is configured to source pressure and measure mA or V, with all non-essential keys disabled.

Dedicated task menu

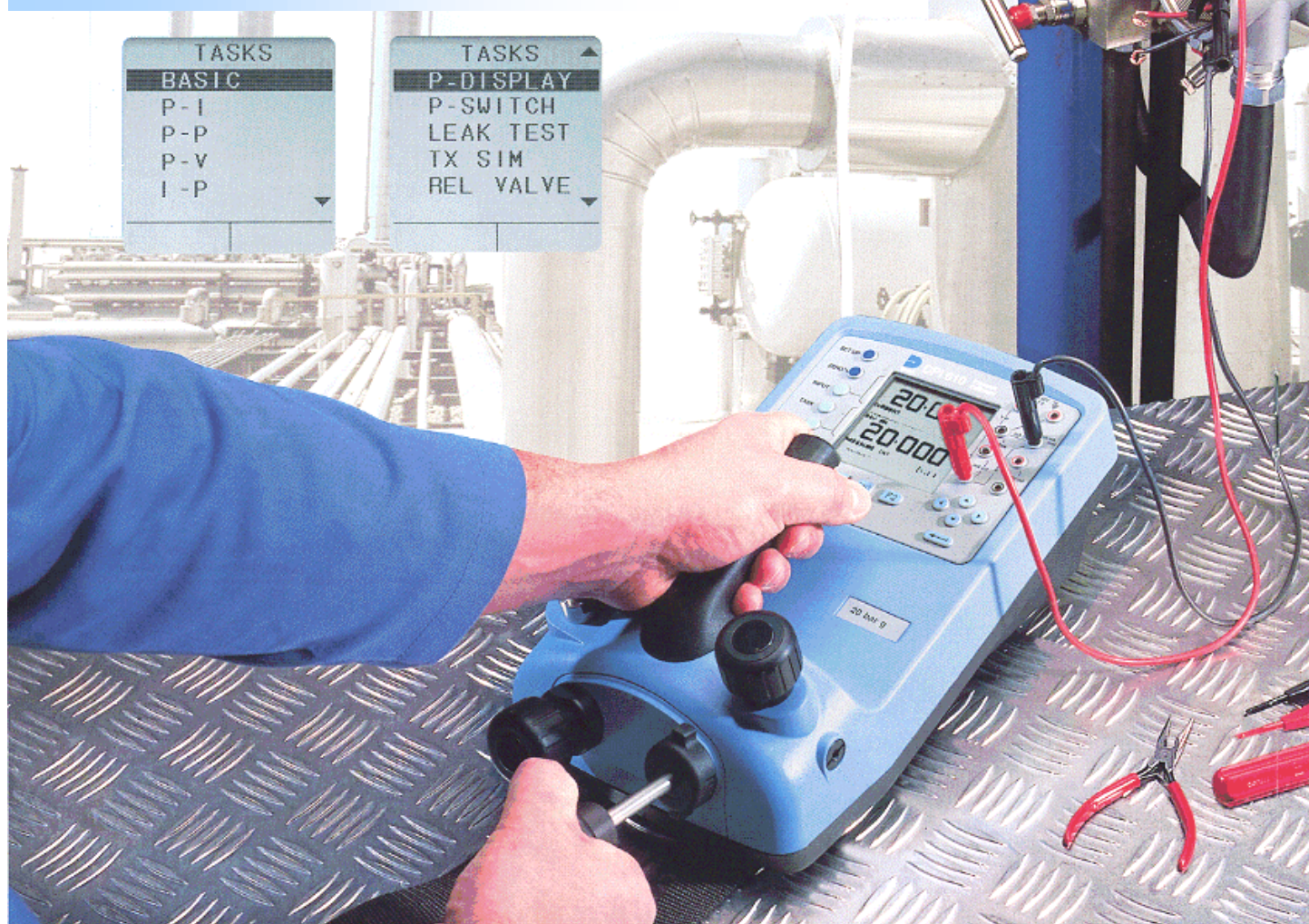
The dedicated **TASK** key gives direct access to the **TASK** menu. Select the required test, for example P-I for a pressure transmitter, and with a single key press, the calibrator is ready.

Use the **ADVANCED** mode for custom tasks and add to the **USER TASK** menu for future use.

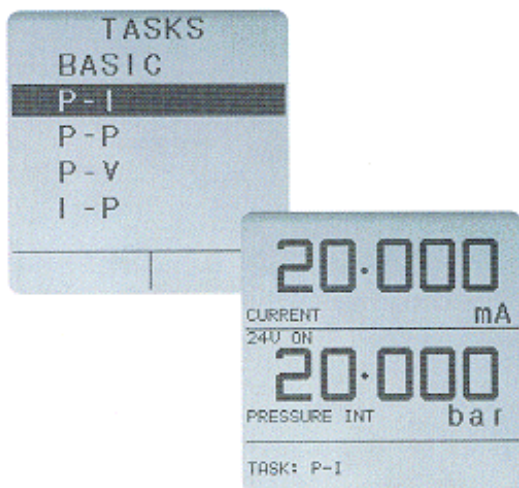
Some of the capabilities

	P	mA	V	10V*	24V*	Switch	°C
Measure	✓	✓	✓			✓	✓
Source	✓	✓		✓	✓		

P = Pressure °C = Local ambient temperature * = Not IS



PRESSURE TRANSMITTER CALIBRATION



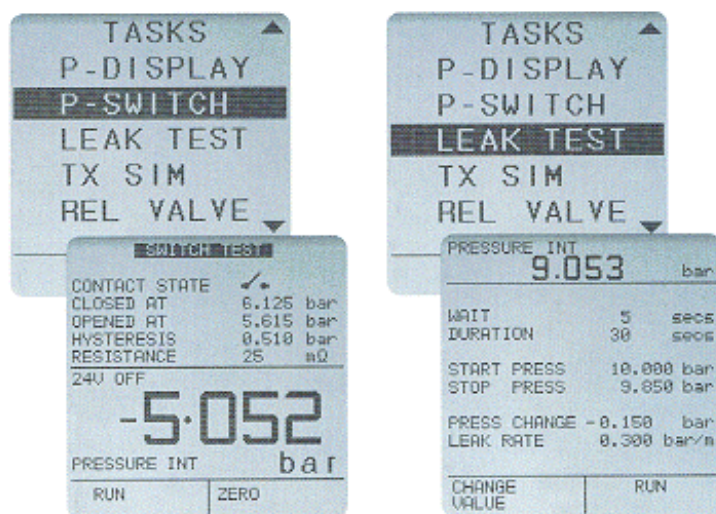
The **P-I** task configures the DPI 610/615 to simultaneously display the **OUTPUT** pressure and the **INPUT** current. The pressure unit can be chosen to suit the transmitter and a 24V supply is available for loop power. (not IS version)

For process transmitters reading in percentage use **%SPAN** to scale the pressure accordingly.

The DPI 610/615 Pneumatic Calibrator hand-pump can generate pressure from -850 mbar to 20 bar. The volume adjuster gives fine pressure setting and the release valve also allows gradual venting for falling calibration points.

Reduce the burden imposed by quality systems such as ISO 9000, simply **STORE** results in memory and leave both pen and calibration sheet back at the office.

PRESSURE SWITCH TESTING AND LEAK TESTING



For Switch Set-up and Fault Finding, the display shows the output pressure and switch state **OPEN** or **CLOSED**. Continuity is declared by an audible signal.

Verify pressure switch performance using the automatic procedure. The DPI 610/615 displays the switch points and the contact hysteresis.

LEAK TEST will check for pressure leaks prior to calibration or during routine maintenance. Define the test times or use the defaults and wait ... The DPI 610/615 will report the **START** and **STOP** pressures, the pressure **CHANGE** and the **LEAK RATE**.

Take a **'SNAPSHOT'** of the working display, all details are stored in a numbered location for later **RECALL**.

LOOP TESTING AND FAULT FINDING

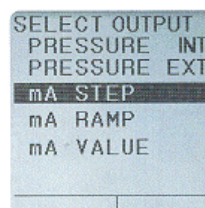
The DPI 610/615 can generate a continuous **mA STEP** or **mA RAMP** output, allowing a single technician to commission control loops.

Feed the loop using **mA STEP** or **mA RAMP** and at the control room, check the instrumentation.

Use **mA VALUE** for alarm and trip circuit tests. Any mA output can be set and adjusted from the keypad.

Comprehensive process features aid flow and level measurement and help with trouble shooting. Select **TARE**, **MAX/MIN**, **FILTER**, **FLOW** or **%SPAN** and the function will be applied to the input parameter.

Save time fault finding, by leaving the DPI 610/615 to monitor system parameters. Use periodic **DATA LOG** or the **MAX/MIN** process function to capture intermittent events.





REMOTE PRESSURE SENSORS

By adding up to 10 external sensors (one at a time) the working ranges of the DPI 610 and DPI 615 can be extended. With modules from 2.5 mbar to 700 bar sensors are available to suit most applications.

As a leading manufacturer of pressure sensors Druck has applied the latest silicon technology and digital compensation techniques to develop these sensors.

Remote sensors offer a costs-effective means of expanding the capabilities of the DPI 610 and DPI 615, for example in the following applications:

- Low Pressure
- Pressure to pressure
- Differential pressure
- Wide range, high accuracy
- Test point monitoring
- To prevent cross contamination
- To configure pneumatic calibrators for high pressure hydraulic systems
- To configure hydraulic calibrators for low pressure pneumatic systems

DPI 615 PORTABLE DOCUMENTING PRESSURE CALIBRATOR

The DPI 615 adds powerful time saving and error eliminating features to the comprehensive functionality of the DPI 610. These include field error calculations with PASS/FAIL analysis and two way PC communications for downloading procedures and uploading results.

Reporting errors in the field

The DPI 615 calculates errors and reports the PASS/FAIL status during field tests. Problems and failures can be analysed graphically for immediate assessment and correction. This simple to use feature reduces calibration and maintenance times and eliminates human errors.



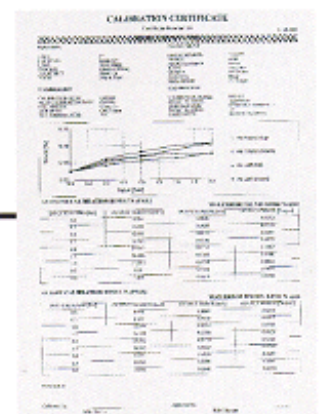
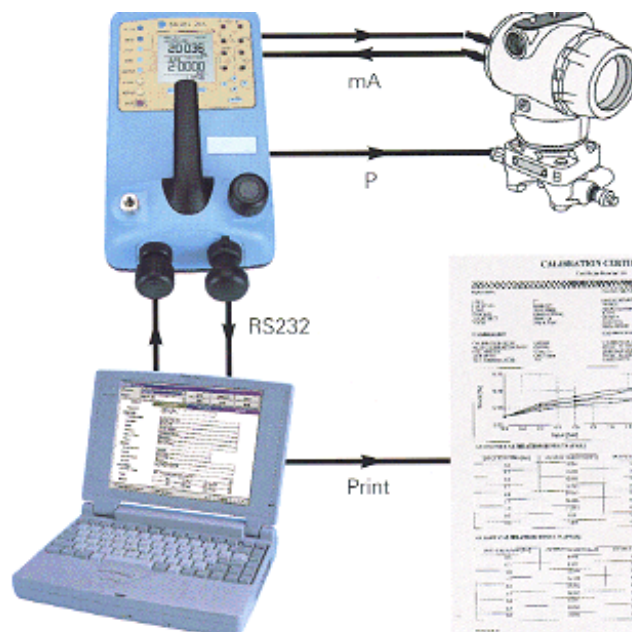
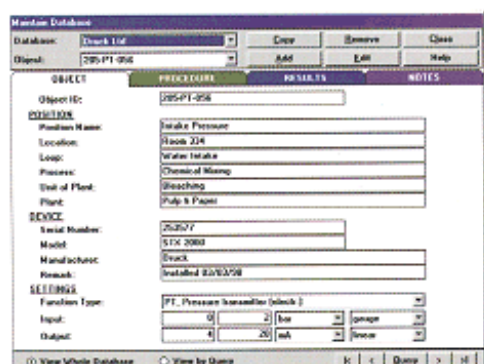
Completing the paper trail

It takes longer to fill out a calibration report, calculate the errors and assess the results than it does to calibrate the transmitter. With the DPI 615, documents can be quickly completed either on site or, at a more convenient time and location, by recalling the information from the DPI 615's memory.

Calibration management systems

When used in conjunction with calibration management software the DPI 615 greatly reduces the financial and resource burden imposed by quality systems such as ISO 9000. As work orders are issued, object lists and procedures are downloaded to the DPI 615. In the field these procedures configure the instrument for the tests. The errors and PASS/FAIL status are reported and recorded in memory (as found or as left results) for later upload to the software. Calibration certificates can then be printed and plant maintenance systems updated. The whole documenting process is completed in a fraction of the time it takes using manual systems and without human error.

For more information on calibration software please refer to the Linkpak-W and Intecal-W data sheets or visit www.druck.com for free demonstration software. The DPI 615 is also compatible with many third party software systems.



DPI 610/615 Series

Standard Specification



PNEUMATIC CALIBRATOR DPI 610/615PC

Hand-pump
-850 mbar to 20 bar capability

Volume adjuster
Fine pressure adjustment

Release valve
Vent and controlled release

Pressure port
G $\frac{1}{8}$ (female)

Media
Most common gases



HYDRAULIC CALIBRATOR DPI 610/615HC

Priming pump
M5 (female) feed port

Shut-off valve
Open for system priming

Screw press
0 to 400 bar capability

Pressure port
G $\frac{1}{8}$ (female)

Media
Demineralised water and most hydraulic oils



INDICATOR DPI 610/615I

Release valve
Vent and controlled release

Pressure port
G $\frac{1}{8}$ (female)

Media
Most common fluids compatible with stainless steel

ELECTRICAL INPUTS

Input	Range	Accuracy	Resolution	Remarks
Voltage*	± 50 V d.c. (± 30 V d.c. IS version)	$\pm 0.05\%$ Rdg. $\pm 0.004\%$ F.S.	100nV max	Autoranging, >10MW
Current*	± 55 mA	$\pm 0.05\%$ Rdg. $\pm 0.004\%$ F.S.	0.001mA	10V, 50V max. (30V max IS version) Local ambient 5mA whetting (1mA IS version)
Temperature Switch	-10° to 40°C	$\pm 1^\circ\text{C}$	1°C	

* Temperature coefficient $\pm 0.0075\%$ reading/ $^\circ\text{C}$ w.r.t. 20°C

For IS version $U_i = 30$ V max $I_i = 100$ mA $P_i = 1$ W max

ELECTRICAL INPUTS

Output	Range	Accuracy	Resolution	Remarks
Voltage (not IS version)	10V d.c. 24V d.c.	$\pm 0.1\%$ $\pm 5\%$		Max. load 10mA Max. load 26mA
Current*	0 to 20mA	$\pm 0.05\%$ Rdg. $\pm 0.01\%$ F.S.	0.001mA	

* Temperature coefficient $\pm 0.0075\%$ reading/ $^\circ\text{C}$ w.r.t. 20°C.

For IS version $U_i = 30$ V max $I_i = 100$ mA $P_i = 1$ W max $U_o = 7.9$ V max

SPECIAL FEATURES

Pressure units

25 scale units plus one user defined.

mA step

Continuous cycle at 10 sec intervals.

Function	MA Output							
	4	8	12	16	20			
4 to 20mA linear	0	5	10	15	20			
0 to 20mA linear	4	5	8	13	20			
4 to 20mA flow	0	1.25	5	11.25	20			
0 to 20mA flow	3.8	4	4.2	12	19	20	12	
4 to 20mA valve								

mA ramp

Continuous cycle with configurable end values and 60 sec travel time.

Data log

Multi-parameter with internal memory for 10,000 values. Variable sample period for data logging or log on key press for calibration results.

Snapshot

Paperless notepad. Stores up to 20 complete displays.

RS232 Computer interface (IS version - safe area use only)

DPI 610 Unidirectional for uploading results to a PC.

DPI 615 Bidirectional for downloading procedures and uploading results.

Process functions

Tare, max/min, filter, flow, % span.

Language

English, French, German, Italian, Portuguese and Spanish.

Power management

Auto power OFF, auto backlight OFF, battery low indicator and status on key press.

DISPLAY

Panel

60 x 60 mm graphic LCD with backlight. (backlight not available on IS version)

Readout

± 99999 capability, 2 readings per second.

ENVIRONMENTAL

Temperature

Operating: -10° to 50°C

Calibrated: -10° to 40°C

Humidity

0 to 90%, non-condensing.

Sealing

IP54.

Conformity

EN61010, EN50081-1, EN50082-1, CE marked.

Intrinsically Safe version: supplied certified for use in hazardous areas

EEEx ia IIC T4 certificate Ex99E2002X

To EN50020: 1994 and EN50014: 1992

Ex ia IIC T4 certificate pending

To CAN/CSA - E79-11-95 and CAN/CSA E79 - 0 - 95

(Division 1, class 1, groups A, B, C and D)

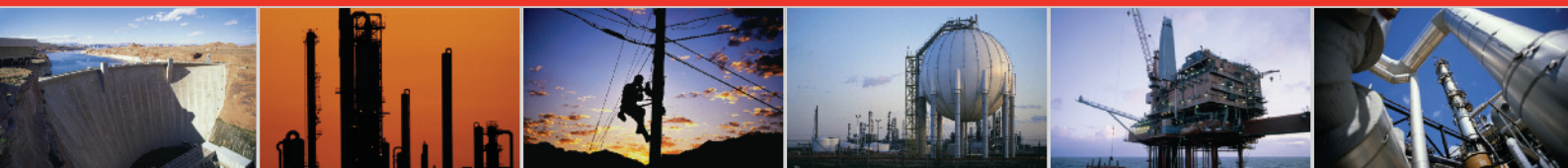
Physical

3 kg, 300 x 170 x 140 mm.

Power supply

6 x 1.5 V C cells, alkaline (upto 65 hrs nominal use at 20°C for the standard version and 30 hrs for the IS version). For rechargeable batteries see Option A (20 hrs nominal use).

INLEC, supporting you to deliver a world class service, every day, in every sector ...



OUR COMMITMENT TO YOU

A wealth of knowledge and experience.

You can take advantage of expert advice to ensure you get the best, most appropriate and cost effective equipment for the job. We supply a wide variety of industries, so if there is another way to do the job or save you time and money we'll pass on the benefit of our experience for free.

Honest advice, just a phone call away.

If we don't have a particular item, rather than hiring you something that won't do the job, we would rather direct you to an alternative supplier. You will always be provided with full instructions and if you still need help, call our technical team on Nationwide Low Call 0333 6000 600. Our aim is to save you time, frustration and money.

Top quality equipment from major manufacturers.

With Inlec you'll get the most accurate, reliable and well-maintained equipment available. Prices are regularly reviewed to ensure you always enjoy the best value for money. We have made a significant investment in test equipment so we ensure that it's well packed to minimise damage and delay.

We really do listen to you.

You won't waste your time contacting Inlec. Every request for equipment is logged and carefully considered. Listening to our customers helps keep our product range up to date and relevant. If you are unhappy about any aspect of our service please let us know so we can put it right.

YOUR 5 WAY GUARANTEE

1 GUARANTEE SAME DAY DESPATCH

We understand why prompt delivery is important to you. So, if we confirm your order before 3pm, you are guaranteed same day despatch.

2 OUR PRICE GUARANTEE

Inlec guarantee you real value for money. Our price match policy is simple - if you can hire the same product for less elsewhere, we guarantee to match that price and reduce it by a further 10% of the difference - and still deliver our industry leading technical and customer support.

For full details check our price-match guarantee online

3 TOP QUALITY GUARANTEED

All equipment is thoroughly checked prior to dispatch to ensure you receive it in full, safe working order. Your shipment will be securely packed and include manufacturer's instructions, accessories or consumables and a valid calibration certificate where appropriate. In addition, Inlec offer a 24 hour replacement service if you decide the equipment is not suitable for your application*.

4 FRIENDLY, KNOWLEDGEABLE ADVICE GUARANTEED

Inlec are happy to provide you with free advice, from an unbeatable team of experienced, knowledgeable and friendly engineers and hire experts.

5 YOUR GUARANTEE OF THE BEST CUSTOMER SERVICE

Throughout your hire we will work hard to ensure you enjoy the very best in support and service from Inlec. We guarantee you won't find better service anywhere in the industry.

*subject to availability and conditions

Europe's leading Test Equipment Hire Specialist



LAB NO. 0535



Nationwide Low Call **0333 6000 600**
Online: **www.inlec.com**

Inlec UK Ellerbeck Way, Stokesley Business Park, Stokesley N Yorkshire TS9 5JZ United Kingdom



CERT. NO. GB93/1773



Accredited Contractor