

EUROPE'S LARGEST SELECTION OF TEST & MEASUREMENT EQUIPMENT FOR HIRE

**INLEC.COM**

# DATA-SHEET



Nationwide Low Call  
**0333 6000 600**

**WHY BUY**  
WHEN YOU CAN HIRE



**GE Druck**

## **DPI 800/802**

### Pressure Indicator/Loop Calibrator

The **DPI 800** Series is a complete range of advanced, robust and simple to use hand-held instruments. Highly cost effective, these tools are ideal for test/calibration of many popular process parameters. Advanced features and technical innovations address more applications in less time and deliver results you can rely on.

- Ranges from 70 mbar to 200 bar
- Single or dual range configuration
- Pressure test and maintenance
- Transmitter calibration
- Loop set-up and diagnostics
- Switch verification

*IDOS pressure sensors provide 0.05% FS all-inclusive accuracy*

*mA measure, switch test and 24V loop power*

*Large backlit display, menu driven interface*

*HART® loop resistor*

*Robust and weatherproof*

*Compact, simple to use, easy to carry*

*Convenient, one-handed operation*

*Secure grip, impact resistant, elastomer protected*



*Plug/play connector for IDOS Universal Measurement Modules*

# DPI 800/802

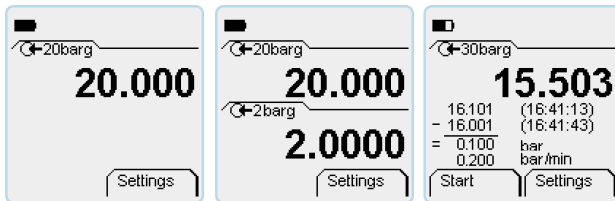
## Pressure Indicator/Loop Calibrator

| Features                                  | Pressure |         | Temperature |         |         |         |         |
|---|----------|---------|-------------|---------|---------|---------|---------|
|   | DPI 800  | DPI 802 | RTD         |         | T/C     |         |         |
|   |          |         | DPI 811     | DPI 812 | DPI 820 | DPI 821 | DPI 822 |
| Indicator (measure)                       | ✓        | ✓       |             |         |         |         |         |
| Calibrator (measure or source)            |          |         | ✓           | ✓       | ✓       | ✓       | ✓       |
| Thermometer (dual input and differential) |          |         |             | ✓       | ✓       | ✓       | ✓       |
| mA measure with 24V loop power            |          | ✓       |             | ✓       |         |         | ✓       |
| Switch test                               |          |         |             | ✓       |         |         | ✓       |
| HART® resistor                            |          | ✓       |             | ✓       |         |         | ✓       |
| IDOS Universal Measurement Modules        | ①✓       | ①✓      | ①✓          | ①✓      | ①✓      | ①✓      | ①✓      |
| Programmable step and ramp output         |          |         | ✓           | ✓       | ✓       | ✓       | ✓       |
| Hold, Max/Min/Avg, Filter, Alarm, Tare    | ✓        | ✓       | ✓           | ✓       | ✓       | ✓       | ✓       |
| 25 pressure units plus 5 user, Leaktest   | ✓        | ✓       | ②✓          | ②✓      | ②✓      | ②✓      | ②✓      |
| 1000 point data memory, RS 232            |          |         |             |         |         | ✓       |         |
| <b>Applications</b>                       |          |         |             |         |         |         |         |
| Measurement & monitoring                  | ✓        | ✓       | ✓           | ✓       | ✓       | ✓       | ✓       |
| Indicator, controller & recorder testing  | ✓        | ✓       | ✓           | ✓       | ✓       | ✓       | ✓       |
| Transmitter maintenance and calibration   |          | ✓       |             | ✓       |         |         | ✓       |
| Process loop set-up and maintenance       |          | ✓       |             | ✓       |         |         | ✓       |
| Switch, trip and safety system testing    |          | ✓       |             | ✓       |         |         | ✓       |

① Optional please refer to IDOS datasheet. ② With IDOS pressure module connected.

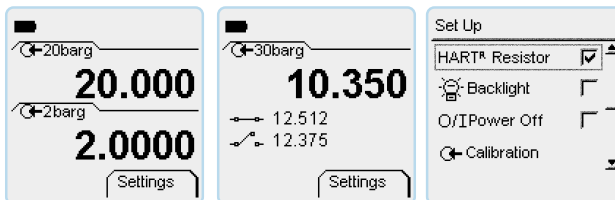
### Pressure test and measurement

**DPI 800 Pressure Indicator** is the ideal pressure measurement tool. **Pressure ranges from 70 mbar to 200 bar** including vacuum options. **All-inclusive accuracy** can be relied on from one year to the next, even in tough environmental conditions (see common specifications below). **Dual sensor configuration** for extended measurement range and simultaneous two channel reading. **Stainless steel sensor construction** is available for compatibility with a wide range of fluids and gases. **Programmable leak test** reports the pressure drop and leak rate. **Advanced features** such as Hold, Maximum/Minimum/Average, Alarm and Tare facilitate troubleshooting.



### Pressure instrumentation and loop maintenance

**DPI 802 Pressure Loop Calibrator** additionally provides simultaneous pressure and mA measurement for transmitter and loop maintenance. **24V loop power supply** energises transmitters and control loops. **Automatic switch test** captures open/closed trip values providing a fast and highly accurate "safety system" check. **HART® resistor** can be switched into the loop when required for a HART® digital communicator.



### IDOS flexibility

**IDOS** (Intelligent Digital Output Sensor) Universal Pressure Modules are available from 70 mbar to 200 bar.

**Total flexibility** means IDOS modules can be used with any compatible instrument, for example, a DPI 812 RTD loop calibrator can become a fully featured pressure calibrator.

**Plug and Play** modules are interchangeable between instruments requiring no set-up or instrument calibration.

**Range expansion** is simply achieved by adding modules. Please refer to IDOS Universal Pressure Module datasheet.

### DPI 800 and 802 specification

| Pressure Range               | G/D | G | A | Media + - | Over-pressure | *Accuracy %FS |      |
|------------------------------|-----|---|---|-----------|---------------|---------------|------|
|                              |     |   |   |           |               | S             | P    |
| +/(70, 200, 350, 750) mbar   | ✓   |   |   | ② ③       | 2 x FS        | 0.075         | 0.03 |
| 350 mbar                     |     |   | ✓ | ②         | 2 x FS        | 0.1           | N/A  |
| -1 to (1 or 2) bar           |     | ✓ |   | ② ③       | 2 x FS        | 0.05          | 0.01 |
| 2 bar                        |     |   | ✓ | ②         | 2 x FS        | 0.075         | N/A  |
| -1 to (3.5, 7, 10 or 20 bar) |     | ✓ |   | ①         | 2 x FS        | 0.05          | 0.01 |
| 7, 20 bar                    |     |   | ✓ | ①         | 2 x FS        | 0.075         | N/A  |
| 35, 70, 100, 135, 200 bar    |     | ✓ |   | ①         | 2 x FS        | 0.05          | 0.01 |

G=Gauge, A=Absolute, G/D=gauge/differential (calibrated referenced to atmosphere max line pressure 2 bar). ①Stainless steel compatibility ②Non-corrosive gas/fluid. ③Non-corrosive gas. (N/A=Not available). Accuracy assumes regular zero correction.

**\*Standard Accuracy:** Total accuracy 0 to 50°C and 1 year stability.

Ranges 20 bar and below include negative calibration

**\*Premier Accuracy:** Accuracy 18 to 28°C. Stability 0.01% rdg/year.

**Single or dual range:** One or two internal sensors can be selected. For dual range instruments, *G/D ranges will be configured as G (gauge).*

*Only one of the two sensors can be 100 bar or above.*

*Ranges 350mbar and below are not available.*

**Pressure connections:** G 1/8 female or 1/8 NPT female

### DPI 802 only

**mA measure:** 0 to 55 mA 0.02% rdg + 3 counts.

Includes 1 yr stability. Outside 10 to 30°C add 0.002%FS/°C.

**24V loop power:** +/-10% (35 mA maximum).

**Switch detection:** Open and closed. 2 mA whetting current.

**HART® resistor:** Menu selectable 250 ohm resistor

### DPI 800 series common specification

**Operating temperature:** -10 to 50°C.

**Humidity:** 0 to 90% non-condensing (Def Stan 66-31, 8.6 cat III).

**Ingress protection:** IP 54 dust and splashing water.

**Shock and vibration:** Def Stan 66-31, 8.18 and 8.4 cat III.

**EMC:** EN61326-1 :1997 + A1 :1998 + A2: 2001

**Safety:** Electrical EN61010:2001. Pressure directive, class SEP. CE marked

**Display:** Graphic 48 X 48 mm LCD with backlight. 99999 resolution.

**Size and weight:** 180 x 85 x 50 mm, 500g.

**Batteries:** 3 x AA alkaline. > 50 hrs measure. > 10 hrs 24V source.

### Accessories

**IO800A: Carry case:** Soft fabric case with accessory pocket.

**IO800B: Belt clip, wrist strap/hanging loop and bench stand.**

**IO800C: NiMh batteries with charger:** Batteries charged externally.

### Ordering information

Please state the model number DPI 800 or 802 for standard accuracy and 800P or 802P for high accuracy, pressure range(s) G, A or G/D, G1/8 female or 1/8 NPT female and accessories as separate items.

*Note: Each unit is supplied with batteries, calibration certificate and user guide. The DPI 802 and 802P include a set of electrical test leads.*

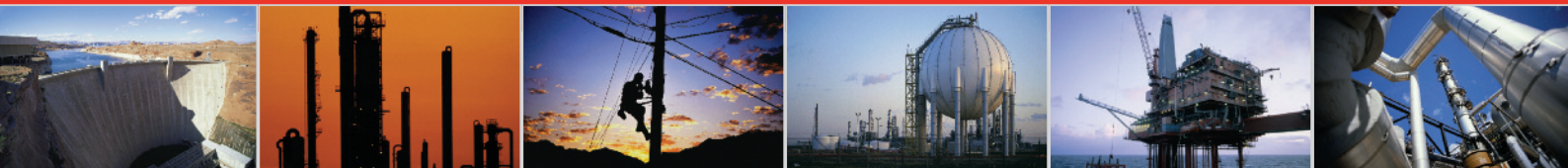
### Related products

GE Druck is a world leader in the design and manufacture of pressure, temperature and electrical field calibrators, laboratory/workshop calibration equipment and pressure sensors.

*Continuing development can mean specification changes without notice*

Agent:

# INLEC, supporting you to deliver a world class service, every day, in every sector ...



## OUR COMMITMENT TO YOU

### A wealth of knowledge and experience.

You can take advantage of expert advice to ensure you get the best, most appropriate and cost effective equipment for the job. We supply a wide variety of industries, so if there is another way to do the job or save you time and money we'll pass on the benefit of our experience for free.

### Honest advice, just a phone call away.

If we don't have a particular item, rather than hiring you something that won't do the job, we would rather direct you to an alternative supplier. You will always be provided with full instructions and if you still need help, call our technical team on Nationwide Low Call 0333 6000 600. Our aim is to save you time, frustration and money.

### Top quality equipment from major manufacturers.

With Inlec you'll get the most accurate, reliable and well-maintained equipment available. Prices are regularly reviewed to ensure you always enjoy the best value for money. We have made a significant investment in test equipment so we ensure that it's well packed to minimise damage and delay.

### We really do listen to you.

You won't waste your time contacting Inlec. Every request for equipment is logged and carefully considered. Listening to our customers helps keep our product range up to date and relevant. If you are unhappy about any aspect of our service please let us know so we can put it right.

## YOUR 5 WAY GUARANTEE

### 1 GUARANTEE SAME DAY DESPATCH

We understand why prompt delivery is important to you. So, if we confirm your order before 3pm, you are guaranteed same day despatch.

### 2 OUR PRICE GUARANTEE

Inlec guarantee you real value for money. Our price match policy is simple - if you can hire the same product for less elsewhere, we guarantee to match that price and reduce it by a further 10% of the difference - and still deliver our industry leading technical and customer support.

For full details check our price-match guarantee online

### 3 TOP QUALITY GUARANTEED

All equipment is thoroughly checked prior to dispatch to ensure you receive it in full, safe working order. Your shipment will be securely packed and include manufacturer's instructions, accessories or consumables and a valid calibration certificate where appropriate. In addition, Inlec offer a 24 hour replacement service if you decide the equipment is not suitable for your application\*.

### 4 FRIENDLY, KNOWLEDGEABLE ADVICE GUARANTEED

Inlec are happy to provide you with free advice, from an unbeatable team of experienced, knowledgeable and friendly engineers and hire experts.

### 5 YOUR GUARANTEE OF THE BEST CUSTOMER SERVICE

Throughout your hire we will work hard to ensure you enjoy the very best in support and service from Inlec. We guarantee you won't find better service anywhere in the industry.

\*subject to availability and conditions

## Europe's leading Test Equipment Hire Specialist



LAB NO. 0535



Nationwide Low Call **0333 6000 600**  
Online: **www.inlec.com**

Inlec UK Ellerbeck Way, Stokesley Business Park, Stokesley N Yorkshire TS9 5JZ United Kingdom



CERT. NO. GB93/1773



Accredited Contractor