

EUROPE'S LARGEST SELECTION OF TEST & MEASUREMENT EQUIPMENT FOR HIRE

**INLEC.COM**

# DATASHEET



Nationwide Low Call  
**0333 6000 600**

**WHY BUY**  
WHEN YOU CAN HIRE



# FLIR B425

Infrared Camera with Picture in Picture and Thermal Fusion

The B-Series' top of the line model B425 offers an outstanding solution for professional thermographers conducting building inspections and energy declaration surveys. The camera is jammed with useful features, including Delta T, Panorama support and digital camera video recording.

- 50 mK thermal sensitivity
- IR resolution 320 x 240 pixels
- Digital camera, 3.1 Mp with LED lights
- Temperature range -20 °C to +350 °C
- 8x digital zoom
- Periodic Storage
- Panorama support
- Instant Reports
- MeterLink™



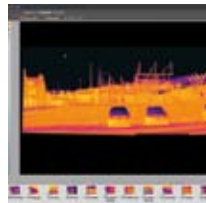
Multifunction 3.5" Touch Screen



Picture in Picture (PiP)



120° lens rotation



Panorama support



## FLIR B425 Features

- **High Resolution IR Images** — 320 x 240 pixels infrared resolution, NETD 50 mK
- **Digital Camera** — 3.1 Megapixels with built-in LED lights provides sharp images regardless of lighting conditions
- **Wide Temperature Range** — Measures from -20 °C to +350 °C targeting building applications
- **Insulation alarm** — Shows the insulation performance of the building structure
- **Dew point alarm** — Alerts you to the areas where there is a risk of condensation
- **Zoom** — 8x continuous digital zoom for capturing small details
- **Picture in Picture (PiP)** — Displays resizable IR image super-imposed over a digital image
- **Thermal Fusion** — Merging visual and infrared images, allows for easier identification and interpretation of infrared images
- **Laser Pointer** — Pinpoints the hot spot on the IR image with the real physical target
- **Annotations** — Add text & sketch comments and image markers via touch screen. Record voice comments via Bluetooth wireless headset
- **± 2% Accuracy** — Reliable temperature measurement
- **Thumbnail Image Gallery** — Allows quick search of stored images
- **MeterLink™** — Wirelessly transmit data from clamp or moisture meter to your infrared camera
- **Delta Temperature** — Automatic calculation of temperature difference between two measurement tools
- **Panorama** — Take sequential images and combine to large image with FLIR BuildIR SW
- **Periodic Storage** — Store images automatically at preset intervals
- **Instant Reports** — Create instant report directly in camera, easily copy report to USB
- **Copy to USB** — Upload images and measurement findings to USB stick
- **IR Window Auto-Correction** — Automatic sensitivity adjustment when inspecting high voltage through safety IR windows
- **Li-Ion Rechargeable Battery** — Replaceable battery lasts > 4 hours of continuous use
- **Interchangeable Optics** — Standard 25° lens and optional 15°, 45° and 90° lenses
- **Standard SD Card** — Stores more than 1000 radiometric JPEG images
- **Includes** — SD Memory Card, Li-Ion rechargeable battery with 100-260V AC adaptor/charger, 2-bay battery charger, QuickReport software, USB Mini-B cable, video cable, sun shield, stylus pen & headset, camera lens cap, and transport case



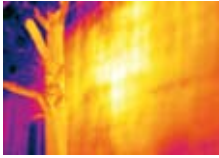
METER LINK  
Bluetooth

### What is MeterLink™?

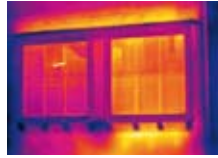
MeterLink displays and documents readings from your Extech moisture- or clamp meter directly on your infrared image using Bluetooth wireless connection.

MeterLink, a FLIR industry-first technology, will: greatly improve your diagnostics, save time annotating readings, eliminate data errors, and add more customer value to your reports.

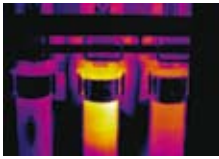
# Applications



Building: Water and mildew in wall



Building: Heat Loss



Electrical: Hot Fuses



Building: Heat Loss



## FLIR B425 Specifications

Imaging and optical data	
Field of view (FOV)	25° × 19° / 0.4 m
Thermal sensitivity/NETD	50 mK
Image frequency	9 Hz or 30 Hz
Focus	Manual/Automatic
Zoom	1–8× continuous, digital zoom, including panning
Spectral range	7.5–13 μm
IR resolution	320 × 240 pixels
Image presentation	
Display	Built-in touch screen, 3.5" color LCD
Image modes	IR image, visual image, MPEG4 video, thermal fusion, picture in picture, thumbnail gallery
Thermal Fusion	IR image shown above, below or within temp interval on visual image
Picture in Picture	Resizable and movable IR area on visual image
Measurement	
Object temperature range	–20 °C to +350 °C
Accuracy	±2 °C
Measurement analysis	
Spotmeter	5
Area	5 boxes with max./min./average
Isotherm	Detect high/low temperature/interval
Difference temperature	Delta temperature between measurement functions or reference temperature
Measurement function alarm	Audible/visual alarms (above/below) on spotmeters, boxes and difference temperature
Screening	Difference temperature alarm, audible
Dew point alarm	1 dew point alarm
Insulation alarm	1 insulation alarm
Set-up	
Color palettes	BW, BW inv, Iron, Rain, RainHC, Bluered
Storage of images	
Image storage	Standard JPEG, including measurement data, on memory card
Image storage mode	IR/visual images; simultaneous storage of IR and visual images; MPEG-4 non-radiometric video
Periodic image storage	Every 10 seconds up to 24 hours
Panorama	For creating panorama images in FLIR BuildIR software
Image annotations	
Voice	60 seconds
Text	Text from predefined list or soft keyboard on touch screen
Image marker	4 on IR or visual image
Sketch	From touch screen
MeterLink	Connect Extech Clamp Meter EX845/Moisture Meter M0297 via Bluetooth®
Digital camera	
Built-in digital camera	3.1 Mpixel (2048 × 1536 pixels), and LED lights
Digital camera video recording	Video clip to memory card
Physical data	
Camera weight, incl. battery	0.88 kg
Camera size (L × W × H)	106 × 201 × 125 mm

Specifications and prices subject to change without notice.

Copyright © 2010 FLIR Systems. All right reserved including the right of reproduction in whole or in part in any form.

### FLIR Systems, Sweden

World Wide Thermography Center  
Rinkebyvägen 19 - PO Box 3  
SE-182 11 Danderyd  
Tel: +46 (0)8 753 25 00  
e-mail: sales@flir.se

[www.flir.com/thg](http://www.flir.com/thg)



### Software

- **FLIR QuickReport™**  
Allows the user to organize, analyze and present infrared image data in a report. Delivered with your FLIR camera.
- **FLIR BuildIR™**  
A powerful yet easy-to-use software designed to visualise and quantify building related issues.

### Accessories

- Pouch
- Extra battery
- Battery charger
- Car charger
- Selection of lenses



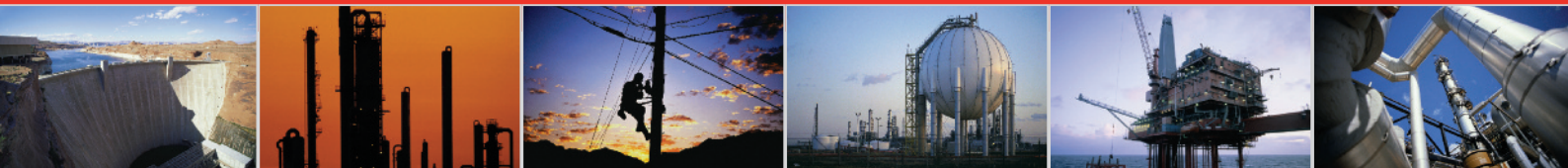
### Training

FLIR cooperates with Infrared Training Centre, an independent, ISO certified, worldwide training facility. ITC offers infrared training, certifications accepted by many standardization organizations, and specialized instruction in various application areas. For more info visit [www.infraredtraining.com](http://www.infraredtraining.com)

### Authorised FLIR dealer:

SEBA KMT UK  
Unit C Beversbrook Centre  
Redman Road  
Calne  
SN11 9PR  
Tel: 01249 816181 email: sales@sebakmtuk.com

# INLEC, supporting you to deliver a world class service, every day, in every sector ...



## OUR COMMITMENT TO YOU

### A wealth of knowledge and experience.

You can take advantage of expert advice to ensure you get the best, most appropriate and cost effective equipment for the job. We supply a wide variety of industries, so if there is another way to do the job or save you time and money we'll pass on the benefit of our experience for free.

### Honest advice, just a phone call away.

If we don't have a particular item, rather than hiring you something that won't do the job, we would rather direct you to an alternative supplier. You will always be provided with full instructions and if you still need help, call our technical team on Nationwide Low Call 0333 6000 600. Our aim is to save you time, frustration and money.

### Top quality equipment from major manufacturers.

With Inlec you'll get the most accurate, reliable and well-maintained equipment available. Prices are regularly reviewed to ensure you always enjoy the best value for money. We have made a significant investment in test equipment so we ensure that it's well packed to minimise damage and delay.

### We really do listen to you.

You won't waste your time contacting Inlec. Every request for equipment is logged and carefully considered. Listening to our customers helps keep our product range up to date and relevant. If you are unhappy about any aspect of our service please let us know so we can put it right.

## YOUR 5 WAY GUARANTEE

### 1 GUARANTEE SAME DAY DESPATCH

We understand why prompt delivery is important to you. So, if we confirm your order before 3pm, you are guaranteed same day despatch.

### 2 OUR PRICE GUARANTEE

Inlec guarantee you real value for money. Our price match policy is simple - if you can hire the same product for less elsewhere, we guarantee to match that price and reduce it by a further 10% of the difference - and still deliver our industry leading technical and customer support.

For full details check our price-match guarantee online

### 3 TOP QUALITY GUARANTEED

All equipment is thoroughly checked prior to dispatch to ensure you receive it in full, safe working order. Your shipment will be securely packed and include manufacturer's instructions, accessories or consumables and a valid calibration certificate where appropriate. In addition, Inlec offer a 24 hour replacement service if you decide the equipment is not suitable for your application\*.

### 4 FRIENDLY, KNOWLEDGEABLE ADVICE GUARANTEED

Inlec are happy to provide you with free advice, from an unbeatable team of experienced, knowledgeable and friendly engineers and hire experts.

### 5 YOUR GUARANTEE OF THE BEST CUSTOMER SERVICE

Throughout your hire we will work hard to ensure you enjoy the very best in support and service from Inlec. We guarantee you won't find better service anywhere in the industry.

\*subject to availability and conditions

## Europe's leading Test Equipment Hire Specialist



LAB NO. 0535



Nationwide Low Call **0333 6000 600**  
Online: **www.inlec.com**

Inlec UK Ellerbeck Way, Stokesley Business Park, Stokesley N Yorkshire TS9 5JZ United Kingdom



CERT. NO. GB93/1773



Accredited Contractor