

EUROPE'S LARGEST SELECTION OF TEST & MEASUREMENT EQUIPMENT FOR HIRE

INLEC.COM

DATA-SHEET



Nationwide Low Call
0333 6000 600

WHY BUY
WHEN YOU CAN HIRE

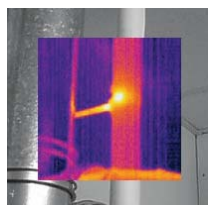


FLIR E40bx

E-Series InfraRed Camera (160 x 120 IR Resolution)

With on board Visual Camera, Wi-Fi, Picture-in-Picture, and Bright LED Light

- 0.045°C @ 30°C Thermal Sensitivity
- Bright LED Light
- Annotate Images with Voice
- Picture-in-Picture (Fixed)
- 3.5" Touch-Screen LCD Display
- 2X Continuous Zoom
- Area Min/Max/Average with Auto Hot/Cold Spot Marker
- Delta T - Differential Temperature



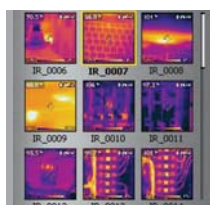
Picture-in-Picture (PIP) Fusion



Built-in Laser Pointer



Built-in Illuminator Light



Thumbnail Image Gallery



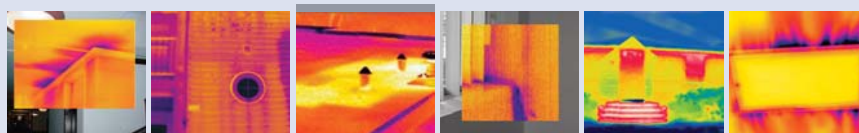
FLIR E40bx Features

- **High Resolution IR Images** — 19,200 pixels (160 x 120) Infrared resolution
- **Visible Light Digital Camera** — 3.1MP resolution with LED lamp provides sharp images regardless of lighting conditions
- **Insulation Alarm** — Detects areas that don't fulfill the insulation requirements
- **Humidity Alarm** — Displays areas with risk of surface condensation where mold growth could occur
- **Picture in Picture (PIP)** — Displays thermal image super-imposed over a digital image
- **Bright LED Light** — Allows the visual camera and fusion to be used in poorly lit environments
- **Temperature Range** — From -4 to 248°F (-20 to 120°C) targeting insulation, HVAC and building applications
- **± 2% Accuracy** — reliable temperature measurement
- **Li-Ion Rechargeable Battery** — lasts >4hrs continuous use; replaceable
- **Laser LocatIR™ Pointer** — Pinpoints a reference spot with a laser
- **Laser Marker** — Marks the point on the IR displayed image as to where the Laser pointer is targeting
- **Wi-Fi Connectivity** — Sends images and data to mobile devices (ie iPhone® or iPad®) to share reports and critical information quickly
- **Area (Min/Max/Average) Mode** — Shows the Minimum or the Maximum Temperature reading within the selected area
- **Auto Hot/Cold Spot Marker** — Marks the area that automatically finds the hottest or coldest spot within the box
- **Voice Comment Recording and Text Annotation** — on images & can be integrated onto report
- **Wireless Communication** — Bluetooth® Transmitter with METERLiNK™
- **Includes** — Memory Card with adapter (stores >1000 Radiometric JPEG images), Li-Ion rechargeable battery, power supply, FLIR Tools software CD-ROM, USB cable, Video cable, hand strap, camera lens cap, and hard case



Warranty extended to 2 years when the camera is registered

Applications



Water Damage — Water leak on ceiling, wall, and roof top

Insulation — Energy Loss, Home Inspection, and HVAC



FLIR METERLiNK feature frees the Thermographer from the manual process of collecting field data



Infrared cameras quickly locate moisture related problems



Collecting moisture readings on damaged surfaces and associating them with regions on an infrared image can be a complicated and cumbersome process



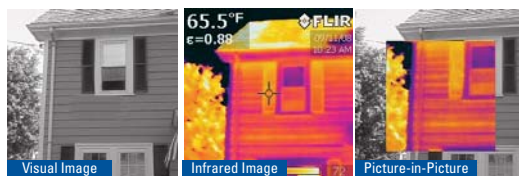
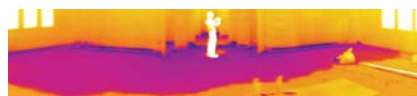
Manual data collection is time-consuming and prone to errors. METERLiNK eliminates this problem by allowing the thermographer to quickly take moisture readings on a damaged surface and associate those readings with the corresponding targets stored in an infrared image

Software Packages

FLIR Reporter is a powerful software for creating compelling and professional, fully customized, easy-to-interpret reports in a standard MS Word Document. You can create a report by simply Dragging and Dropping your images on a desktop icon or using the Wizards to guide you step-by-step through the process. The saved document is a 'live' report with full access to the analysis tools and temperature measurement data. The reports can be multi-page and include all of your IR inspection data -infrared and visual images, temperature measurements, voice comments and text notes.

FLIR BuildIR Software package specifically designed to carry out advanced analysis of building structures. It is used to analyze images taken with an infrared camera, and create inspection reports based on these images.

Panorama Function allows you to conveniently piece together normal sized images to create one large image for a wide angle view of the area being measured by using FLIR BuildIR or Reporter Software package



Picture-in-Picture Fusion

Allows for easier identification and interpretation of infrared images. This advanced technology enhances the value of an infrared image by allowing you to overlay it directly over the corresponding visible image. This functionality combines the benefits of both the infrared image and visual picture at the push of a button.



Humidity Alarm

Displays building areas where surface condensation is present which shows a potential for mold growth

Insulation Alarm

Identifies insufficient insulation in building areas where insulation requirements are not met.

FLIR E40bx Specifications

Features	
Temperature range	-4°F to 248°F (-20°C to 120°C)
Image Storage	>1000 radiometric JPEG images (SD card memory)
Imaging Performance / Image Presentation	
Frame Rate	60Hz
Field of view/min focus distance	25° x 19°/1.31ft (0.4m)
Focus	Manual (Minimum focus distance 1.3ft/0.4m)
Thermal sensitivity (N.E.T.D)	<0.045°C at 30°C
Detector Type - Focal plane array (FPA) uncooled microbolometer	160 x 120 pixels
Spectral range	7.5 to 13µm
Display	Built-in 3.5" color LCD
Image modes	Thermal/Visual/Picture-in-Picture (Fixed)
Image annotation	Voice (60 sec); Text comments
Video Lamp	Bright LED lamp
Laser Classification/Type	Class 2/Semiconductor AlGaInP Diode Laser: 1mW/635nm (red)
Set-up controls	Mode selector, color palettes, configure info to be shown in image, local adaptation of units, language, date and time formats, and image gallery
Measurement modes	3 Spotmeters (movable), 3 Area Boxes (full image with min/max/average), Auto hot/cold spot, Isotherm (above/below/interval), Delta-T
Measurement correction	Reflected ambient temperature & emissivity correction
Battery Type/operating time	Li-Ion/ >4 hours, Display shows battery status
Charging system	In camera AC adapter/2 bay charging system
Shock	25G, IEC 68-2-29
Vibration	2G, IEC 68-2-6
Dimensions/Weight	9.7x3.8x7.2" (246x97x184mm)/<1.82lbs (825g), including battery
Warranty	2 years (Warranty extended to 2 years when the camera is registered)

Ordering Information

Part Number	
49001-0701	FLIR E40bx Thermal Imaging InfraRed Camera (160x120)
ACCESSORIES	
T197752	Li-Ion Rechargeable Battery
T910814	AC Adapter Charger (110-240V, U.S. Plug)
1196497	Cigarette Lighter Adapter Kit, 12VDC (1.2m cable)
T197910	2-Bay Battery Charger including Power Supply (multi plugs)
T197717	FLIR Reporter Professional Analysis Software
T197778	BuildIR Software package
T197965	FLIR Tools Software package
1196961	15° Telephoto Lens
1196960	45° Wide Angle Lens
CERTIFICATION TRAINING	
ITC LEVEL I	ITC Level I Certification Training per attendee
T-BSC	Certification in Infrared Building Science per attendee (3.5 Day Class)
ITC-RESNRG-2	Thermal Imaging for Residential Energy Audits Training per attendee (2 Day Class)
ITC-RESNRG-4	Thermal Imaging for Residential Energy Audits Certification per attendee (4 Day Class)

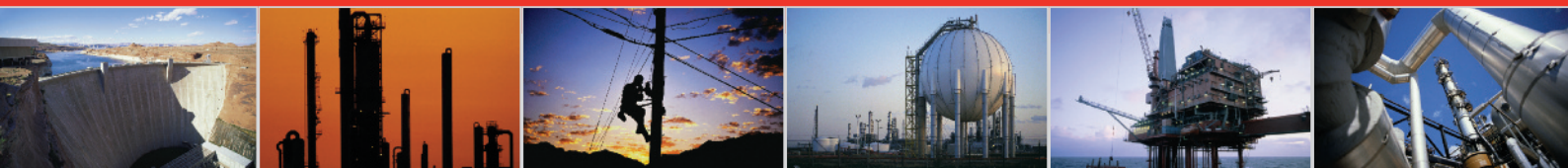
Tel: 1.877.744.FLIR | www.extech.com/ebxseries

Specifications and prices subject to change without notice. Rev. 02/01/11-R1

Copyright © 2010 Extech Instruments Corporation (A FLIR Company). All rights reserved including the right of reproduction in whole or in part in any form.

EXTECH
INSTRUMENTS
A FLIR COMPANY

INLEC, supporting you to deliver a world class service, every day, in every sector ...



OUR COMMITMENT TO YOU

A wealth of knowledge and experience.

You can take advantage of expert advice to ensure you get the best, most appropriate and cost effective equipment for the job. We supply a wide variety of industries, so if there is another way to do the job or save you time and money we'll pass on the benefit of our experience for free.

Honest advice, just a phone call away.

If we don't have a particular item, rather than hiring you something that won't do the job, we would rather direct you to an alternative supplier. You will always be provided with full instructions and if you still need help, call our technical team on Nationwide Low Call 0333 6000 600. Our aim is to save you time, frustration and money.

Top quality equipment from major manufacturers.

With Inlec you'll get the most accurate, reliable and well-maintained equipment available. Prices are regularly reviewed to ensure you always enjoy the best value for money. We have made a significant investment in test equipment so we ensure that it's well packed to minimise damage and delay.

We really do listen to you.

You won't waste your time contacting Inlec. Every request for equipment is logged and carefully considered. Listening to our customers helps keep our product range up to date and relevant. If you are unhappy about any aspect of our service please let us know so we can put it right.

YOUR 5 WAY GUARANTEE

1 GUARANTEE SAME DAY DESPATCH

We understand why prompt delivery is important to you. So, if we confirm your order before 3pm, you are guaranteed same day despatch.

2 OUR PRICE GUARANTEE

Inlec guarantee you real value for money. Our price match policy is simple - if you can hire the same product for less elsewhere, we guarantee to match that price and reduce it by a further 10% of the difference - and still deliver our industry leading technical and customer support.

For full details check our price-match guarantee online

3 TOP QUALITY GUARANTEED

All equipment is thoroughly checked prior to dispatch to ensure you receive it in full, safe working order. Your shipment will be securely packed and include manufacturer's instructions, accessories or consumables and a valid calibration certificate where appropriate. In addition, Inlec offer a 24 hour replacement service if you decide the equipment is not suitable for your application*.

4 FRIENDLY, KNOWLEDGEABLE ADVICE GUARANTEED

Inlec are happy to provide you with free advice, from an unbeatable team of experienced, knowledgeable and friendly engineers and hire experts.

5 YOUR GUARANTEE OF THE BEST CUSTOMER SERVICE

Throughout your hire we will work hard to ensure you enjoy the very best in support and service from Inlec. We guarantee you won't find better service anywhere in the industry.

*subject to availability and conditions

Europe's leading Test Equipment Hire Specialist



LAB NO. 0535



Nationwide Low Call **0333 6000 600**
Online: **www.inlec.com**

Inlec UK Ellerbeck Way, Stokesley Business Park, Stokesley N Yorkshire TS9 5JZ United Kingdom

