

EUROPE'S LARGEST SELECTION OF TEST & MEASUREMENT EQUIPMENT FOR HIRE

**INLEC.COM**

# DATA-SHEET



Nationwide Low Call  
**0333 6000 600**

**WHY BUY**  
WHEN YOU CAN HIRE

# Compact InfraRed Camera (120x120 IR Resolution)

Easy-to-Use Troubleshooting Tool - Weighs only 340g

- Compact sized, Lightweight - 340g
- Thermal Sensitivity of <math><0.1^{\circ}\text{C}</math> @ 25°C
- Easy-to-Use Focus Free Lens
- Stores up to 5000 JPEG Images
- 2.8" LCD Color Display
- Long Battery Life Lasts >4 Hours
- Convenient Thumbnail Image Gallery



Pocket Sized



Large 2.8" Display



Detect hidden problems fast



Includes PC software



## FLIR i7 Features

- **High accuracy** — 2% and thermal sensitivity of 0.1°C helps you find problems faster and easier — critical for condition monitoring of thermally sensitive targets
- **Extremely lightweight** — Resulting in less user fatigue 340g
- **Easy-to-use** — Pocket sized and fully automatic design makes it incredibly easy-to-use even for first time users — perfect for general purpose use
- **Focus free lens** — For convenient viewing
- **High Resolution LCD** — 71mm color LCD
- **Double Molded Design** — Rugged design with easy grip handle construction meets IP43 dust/splashproof standards
- **Measurement Modes** — Spot (center), Area (Min/Max), and Isotherm (above/below) display measurement modes
- **Long Battery Life** — >4 hours continuous operation on a single charge for uninterrupted inspections
- **Large Memory Storage** — MicroSD card stores up to 5000 Radiometric JPEG format images. Each image can be analyzed using the included QuickReport™ PC Software
- **Includes** — 512MB microSD Card, miniSD™ adaptor, Li-Ion rechargeable battery with 90-260V AC adaptor /charger with EU, UK, US and Australian plugs, QuickReport™ software with USB Mini-B cable, built-in manual lens shutter, hand strap, and hard case



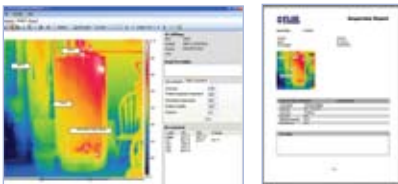


### The Difference is Training

Get the most out of your FLIR IR camera investment with world-class instruction through the Infrared Training Center (ITC), the largest infrared applications training organization in the world. The ITC's Level 1 Infrared Thermography Training Course is geared to the new infrared camera user and focuses on its use for a variety of condition monitoring/predictive maintenance applications. Level 2 and Level 3 certificate courses for more advanced infrared training are also available. Courses are taught by certified instructors with extensive experience in a wide variety of infrared thermography and thermal imaging applications. ITC certifications are recognized by major professional organizations.

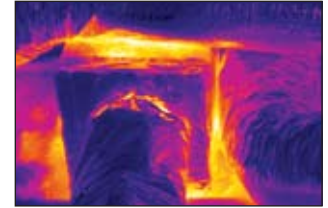
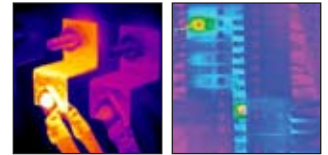
ITC's Official website:  
[www.infraredtraining.com](http://www.infraredtraining.com)

E-LearnIR portal:  
<http://irtraining.inquisiq.com>



**QuickReport™ PC software** enables user to analyze Temperature of all thermal pixels of any FLIR Camera JPEG images

- **Preventive Maintenance** — Thermal imaging is a valuable tool in preventive maintenance of electrical, mechanical and structural systems, able to help detect problems, prevent unscheduled downtime, guide needed corrective action and increase plant safety.
- **Utility Market** — In the utility industry, failure is not an option. That's why infrared thermal imaging has become a key tool for predictive maintenance programs for utility firms everywhere.
- **Energy Audits** — Energy costs are increasing at a substantially alarming rate. Missing or low quality insulation, inadequate Heating, Ventilation, and Air Conditioning (HVAC) systems, poor air flow — all are typical problems that cause homes to waste energy.



## FLIR i7 Specifications

### Features

Temperature range	0°C to 250°C
Image Storage	5000 Images (microSD card memory)
Emissivity	Emissivity Table; 0.1 to 1.0 adjustable

### Imaging Performance / Image Presentation

Field of view/min focus distance	25° X 25°/0.6m
Focus	Focus free
Thermal sensitivity (N.E.T.D)	<0.1°C at 25°C
Detector Type	Focal plane array (FPA) uncooled microbolometer; 120 X 120 pixels
Spectral range	7.5 to 13µm
Display	2.8" color LCD
Image Controls	Palettes (Iron, Rainbow, and Black/White)
Set-up controls	Date/time, °C/°F, 21 languages
Measurement modes	Spot (with correction for emissivity and reflected temperature), Area (Max/Min), Isotherm (above/below selected temperature interval)
Battery Type	Li-Ion
Battery operating time	>4 hours, Display shows battery status
Charging system	In camera, AC adapter; 3 hours to 90% capacity
AC operation	AC adaptor 90-260VAC, 50/60Hz
Adaptor Voltage	5 VDC output to camera
Operating temperature range	0°C to 50°C
Storage temperature range	-40°C to 70°C
Humidity	Operating and storage 20% to 80%, non-condensing, IEC 359
Shock	25G, IEC 68-2-29
Vibration	2G, IEC 68-2-6
Dimensions/Weight	223x79x83mm/<340g, including battery

FLIR Systems Australia  
 Pty Ltd  
 10 Business Park Drive  
 Notting Hill, VIC  
 3168 Australia  
 Tel: +61 3 9550 2800  
 Fax: +61 3 9558 9853  
 Email: [info@flir.com.au](mailto:info@flir.com.au)

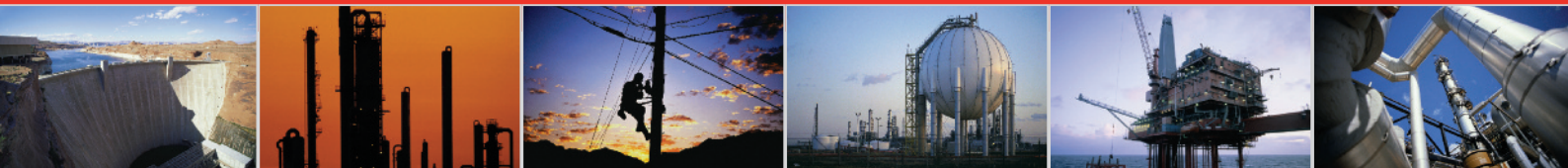
New South Wales Office  
 Tel: +61 2 8853 7870  
 Email: [info@flir.com.au](mailto:info@flir.com.au)

Western Australia office  
 Tel: +61 8 6263 4438  
 Email: [info@flir.com.au](mailto:info@flir.com.au)

Queensland Office  
 Tel: +61 7 3861 4862  
 Email: [info@flir.com.au](mailto:info@flir.com.au)



# INLEC, supporting you to deliver a world class service, every day, in every sector ...



## OUR COMMITMENT TO YOU

### A wealth of knowledge and experience.

You can take advantage of expert advice to ensure you get the best, most appropriate and cost effective equipment for the job. We supply a wide variety of industries, so if there is another way to do the job or save you time and money we'll pass on the benefit of our experience for free.

### Honest advice, just a phone call away.

If we don't have a particular item, rather than hiring you something that won't do the job, we would rather direct you to an alternative supplier. You will always be provided with full instructions and if you still need help, call our technical team on Nationwide Low Call 0333 6000 600. Our aim is to save you time, frustration and money.

### Top quality equipment from major manufacturers.

With Inlec you'll get the most accurate, reliable and well-maintained equipment available. Prices are regularly reviewed to ensure you always enjoy the best value for money. We have made a significant investment in test equipment so we ensure that it's well packed to minimise damage and delay.

### We really do listen to you.

You won't waste your time contacting Inlec. Every request for equipment is logged and carefully considered. Listening to our customers helps keep our product range up to date and relevant. If you are unhappy about any aspect of our service please let us know so we can put it right.

## YOUR 5 WAY GUARANTEE

### 1 GUARANTEE SAME DAY DESPATCH

We understand why prompt delivery is important to you. So, if we confirm your order before 3pm, you are guaranteed same day despatch.

### 2 OUR PRICE GUARANTEE

Inlec guarantee you real value for money. Our price match policy is simple - if you can hire the same product for less elsewhere, we guarantee to match that price and reduce it by a further 10% of the difference - and still deliver our industry leading technical and customer support.

For full details check our price-match guarantee online

### 3 TOP QUALITY GUARANTEED

All equipment is thoroughly checked prior to dispatch to ensure you receive it in full, safe working order. Your shipment will be securely packed and include manufacturer's instructions, accessories or consumables and a valid calibration certificate where appropriate. In addition, Inlec offer a 24 hour replacement service if you decide the equipment is not suitable for your application\*.

### 4 FRIENDLY, KNOWLEDGEABLE ADVICE GUARANTEED

Inlec are happy to provide you with free advice, from an unbeatable team of experienced, knowledgeable and friendly engineers and hire experts.

### 5 YOUR GUARANTEE OF THE BEST CUSTOMER SERVICE

Throughout your hire we will work hard to ensure you enjoy the very best in support and service from Inlec. We guarantee you won't find better service anywhere in the industry.

\*subject to availability and conditions

## Europe's leading Test Equipment Hire Specialist



LAB NO. 0535



Nationwide Low Call **0333 6000 600**  
Online: **www.inlec.com**

Inlec UK Ellerbeck Way, Stokesley Business Park, Stokesley N Yorkshire TS9 5JZ United Kingdom



CERT. NO. GB93/1773



Accredited Contractor