

EUROPE'S LARGEST SELECTION OF TEST & MEASUREMENT EQUIPMENT FOR HIRE

**INLEC.COM**

# DATA-SHEET



Nationwide Low Call  
**0333 6000 600**

**WHY BUY**  
WHEN YOU CAN HIRE

# FLUKE®

## Fluke Industrial Thermal Imagers

Models: Ti32, Ti25 and Ti10

### Technical Data



**High performance thermal imagers have never been this affordable. This rugged. Or, this easy to use ... until now.**

We, at Fluke, are never satisfied leaving the best tools in the hands of the elite, which is why we recently added a new member to our thermal imaging family. The new Fluke Ti32 combines a powerful 320x240 sensor into the award winning, rugged design of the Ti25 and Ti10, delivering the first industrial grade, high performance thermal imager. The result is strikingly crisp, detailed images that, blended with our patented IR-Fusion®, are sure to make a lasting impression. Don't take our word for it—see it yourself!

Fluke thermal imagers are designed, tested, and manufactured in the USA, and feature a two year warranty. Work in a harsh environment? Don't worry. These meet the stringent quality standards that Fluke products are known for worldwide. Able to withstand a 2 meter (6.5 foot) drop, they also meet the requirements for an IP54 rating against dust and moisture.

For added versatility and special applications, the Ti32 includes two field-swappable, rechargeable batteries. Use the optional telephoto and wide-angle lenses to bring distant and wide views into sharp focus.

**Incredible performance at unbelievably low prices.**

**Fluke.** *Not just infrared, infrared you can use.®*



Industrial, mechanical, electromechanical and general building maintenance.



Process, refractory insulation, tank and vessel levels, steam systems and traps, pipes and valves, etc.



Electrical, unbalanced loads, overloaded systems, wiring mistakes or component failure, etc.

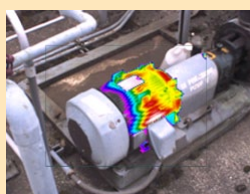
### IR-Fusion® Technology, standard on ALL Fluke thermal imagers

#### More than picture in picture

Infrared images alone can be difficult to understand, which is why Fluke pioneered IR-Fusion, a revolutionary marriage of visible and infrared images never before seen in commercial or industrial thermal imagers. Automatically capturing a visible image with every infrared image allows to you always know exactly what you're looking at.

#### Not all fusion is created equal

Don't be fooled by imitators. Patented IR-Fusion is the only solution with physical parallax correction, enabling the perfect alignment and blending of both infrared and visible images. While many manufacturers have attempted to duplicate Fluke IR-Fusion, none have been able to match it. Turn to Fluke IR-Fusion to deliver the industry's best thermal images.



## Detailed specifications

	Ti32	Ti25	Ti10
Temperature			
Temperature measurement range (not calibrated below -10 °C)	-20 °C to +600 °C (-4 °F to +1112 °F)	-20 °C to +350 °C (-4 °F to +662 °F)	-20 °C to +250 °C (-4 °F to +482 °F)
Temperature measurement accuracy	± 2 °C or 2 % (at 25 °C nominal, whichever is greater)		± 5 °C or 5 % (at 25 °C nominal, whichever is greater)
On-screen emissivity correction	Yes		—
On-screen reflected background temperature compensation	Yes		—
On-screen transmission correction	Yes	—	
Imaging performance			
Image capture frequency	9 Hz refresh rate or 60 Hz refresh rate depending upon model variation	9 Hz refresh rate	
Detector type	320 X 240 Focal Plane Array, uncooled microbolometer	160 X 120 Focal Plane Array, uncooled microbolometer	
Thermal sensitivity (NETD)	≤ 0.05 °C at 30 °C target temp. (50 mK)	≤ 0.1 °C at 30 °C target temp. (100 mK)	≤ 0.2 °C at 30 °C target temp. (200 mK)
Infrared spectral band	7.5 µm to 14 µm (long wave)		
Visual (visible light) camera	Industrial performance 2.0 megapixel	Industrial performance 1.3 megapixel	
Minimum focus distance	46 cm (approx. 18 in)		
Standard infrared lens type			
Field of view	23 ° x 17 °		
Spatial resolution (IFOV)	1.25 mRad	2.5 mRad	2.5 mRad
Minimum focus distance	15 cm (approx. 6 in)		
Optional telephoto infrared lens type			
Field of view	11.5 ° x 8.7 °	—	
Spatial resolution (IFOV)	0.63 mRad	—	
Minimum focus distance	45 cm (approx. 18 in)	—	
Optional wide-angle infrared lens type			
Field of view	46 ° x 34 °	—	
Spatial resolution (IFOV)	2.50 mRad	—	
Minimum focus distance	7.5 cm (approx. 3 in)	—	
Focus mechanism	Manual, one-handed Smart Focus capability		
Image presentation			
Palettes			
Standard	Ironbow, Blue-Red, High Contrast, Amber, Amber Inverted, Hot Metal, Grayscale, Grayscale Inverted	Ironbow, Blue-Red, High Contrast, Amber, Hot Metal, Grayscale	Ironbow, Blue-Red, High Contrast, Grayscale
Ultra Contrast™	Ironbow Ultra, Blue-Red Ultra, High Contrast Ultra, Amber Ultra, Amber Inverted Ultra, Hot Metal Ultra, Grayscale Ultra, Grayscale Inverted Ultra	—	
Level and span	Smooth auto-scaling and manual scaling of level and span		
Fast auto toggle between manual and auto modes	Yes		—
Fast auto-rescale in manual mode	Yes		—
Minimum span (in manual mode)	2.5 °C (4.5 °F)		5 °C (9 °F)
Minimum span (in auto mode)	5 °C (9 °F)		10 °C (18 °F)
IR-Fusion® information			
Automatically aligned (parallax corrected) visual and IR blending	Yes		
Picture-In-Picture (PIP)	Three levels of on-screen IR blending displayed in center of LCD		100 % IR displayed in center of LCD
Full screen infrared	Three levels of on-screen IR blending displayed on LCD		100 % IR displayed on LCD
Color alarms (temperature alarms)	High-temperature alarm (user-selectable)	—	
Voice annotation	60 seconds maximum recording time per image; reviewable playback on imager		—
Image capture and data storage			
	The Ti32 allows user to adjust palette, blending, level, span, IR-Fusion® mode, emissivity, and reflected background temperature compensation, and transmission correction on a captured image before it is stored.	The Ti25 allows user to adjust palette, blending, level, span, IR-Fusion® mode, emissivity, and reflected background temperature compensation on a captured image before it is stored.	—
Image capture, review, save mechanism	One-handed image capture, review, and save capability		
Storage medium	SD Memory Card (2 GB memory card will store at least 1200 fully radiometric (.is2) IR and linked visual images each with 60 seconds voice annotations, or 3000 basic bitmap (.bmp) images, or 3000 jpeg (.jpeg) images; transferrable to PC via included multi-format USB card reader		
File formats	Non-radiometric (.bmp) or (.jpeg) or fully-radiometric (.is2)	Non-radiometric (.bmp) or fully-radiometric (.is2)	
	No analysis software required for non-radiometric (.bmp and .jpeg) files	No analysis software required for non-radiometric bitmap (.bmp) files	
Export file formats w/SmartView® software	BMP, DIB, GIF, JPE, JFIF, JPEG, JPG, PNG, TIF, and TIFF		
Memory review	Thumbnail view navigation and review selection	Sequential image navigation and review	

## General specifications

<b>Operating temperature</b>	-10 °C to +50 °C (14 °F to 122 °F)
<b>Storage temperature</b>	-20 °C to +50 °C (-4 °F to 122 °F) without batteries
<b>Relative humidity</b>	10 % to 95 % non-condensing
<b>Display</b>	9.1 cm (3.7 in) diagonal landscape color VGA (640 x 480) LCD with backlight and clear protective cover
<b>Controls and adjustments</b>	User selectable temperature scale (°C/°F) Language selection Time/Date set Emissivity selection (Ti32 and Ti25 only) Reflected background temperature compensation (Ti32 and Ti25 only) Transmission correction (Ti32 only) User selectable hot spot and cold spot, and center point on the image (other custom markers and shapes in SmartView® software) (Ti32 and Ti25 only) High temperature alarm (Ti32 only) User selectable backlight: "Full Bright" or "Auto" Information display preference (Ti32 only)
<b>Software</b>	SmartView® full analysis and reporting software included
<b>Batteries</b>	Ti32: Two lithium ion rechargeable smart battery packs with five-segment LED display to show charge level Ti25 and Ti10: Internal rechargeable battery pack (included)
<b>Battery life</b>	Ti32: Four+ hours continuous use per battery pack (assumes 50 % brightness of LCD) Ti25 and Ti10: Three to four hours continuous use (assumes 50 % brightness of LCD)
<b>Battery charge time</b>	2.5 hours to full charge
<b>AC battery charging</b>	Ti32: Two-bay ac battery charger (110 V ac to 220 V ac, 50/60 Hz) (included), or in-imager charging. AC mains adapters included. Optional 12 V automotive charging adapter. Ti25 and Ti10: AC adapter/charger (110 V ac to 220 V ac, 50/60 Hz) (included), charges battery while imager is operating or turned off, ac mains adapters included.
<b>AC operation</b>	AC operation with included power supply (110 V ac to 220 V ac, 50/60 Hz). AC mains adapters included.
<b>Power saving</b>	Sleep mode activated after five minutes of inactivity, automatic power off after 30 minutes of inactivity
<b>Safety standards</b>	CSA (US and CAN): C22.2 No. 61010-1-04, UL: UL STD 61010-1 (2nd Edition), ISA: 82.02.01
<b>Electromagnetic compatibility</b>	Meets all applicable requirements in EN61326-1:2006
<b>C Tick</b>	IEC/EN 61326-1
<b>US FCC</b>	CFR 47, Part 15 Class B
<b>Vibration</b>	0.03 g2/Hz (3.8 grms), IEC 68-2-6
<b>Shock</b>	25 g, IEC 68-2-29
<b>Drop</b>	Ti32: 2 meter (6.5 feet) with standard lens, Ti25 and Ti10: 2 meter (6.5 feet)
<b>Size (H x W x L)</b>	Ti32: 27.7 cm x 12.2 cm x 17.0 cm (10.9 in x 4.8 in x 6.7 in), Ti25 and Ti10: 26.7 cm x 12.7 cm x 15.2 cm (10.5 in x 5.0 in x 6.0 in)
<b>Weight (battery included)</b>	Ti32 1.05 kg (2.3 lb), Ti25 and Ti10: 1.2 kg (2.6 lb)
<b>Enclosure rating</b>	IP54 (protected against dust, limited ingress; protection against water spray from all directions)
<b>Warranty</b>	Two-years (standard)
<b>Recommended calibration cycle</b>	Two-years (assumes normal operation and normal aging)
<b>Supported Languages</b>	Czech, English, Finnish, French, German, Italian, Japanese, Korean, Polish, Portuguese, Russian, Simplified Chinese, Spanish, Swedish, Traditional Chinese, and Turkish

## Ordering information

### **FLK-Ti32 9Hz** Industrial-Commercial Thermal Imager, 9 Hz **FLK-Ti32 60Hz** Industrial-Commercial Thermal Imager, 60 Hz **Included with Ti32 models**

Thermal imager with standard infrared lens; ac power supply and battery pack charger (including mains adapters); two, rugged lithium ion smart battery packs; SD memory card; multi-format USB memory card reader for downloading images into your computer; SmartView® software with free software upgrades for life; rugged, hard carrying case; soft transport bag; adjustable hand strap; printed users manual; warranty registration card; interactive training DVD.

### **FLK-Ti25 9Hz** Thermal Imager **FLK-Ti10 9Hz** Thermal Imager **Included with Ti25 and Ti10 models**

Thermal imager with standard infrared lens, ac power supply/battery charger (including mains adapters); SD memory card; multi-format USB memory card reader for downloading images into your computer; SmartView® software with free software upgrades for life; rugged, hard carrying case; soft transport bag; adjustable hand strap; printed users manual; warranty registration card; interactive training DVD.

### **Optional accessories**

**FLK-LENS/TELE1** Telephoto Infrared Lens (Ti32 only)  
**FLK-LENS/WIDE1** Wide-angle Infrared Lens (Ti32 only)  
**TI-CAR-CHARGER** Thermal Imager Vehicle Charger  
**TI-VISOR** Thermal Imager Visor  
**BOOK-ITP** Introduction to Thermography Principles Book  
**TI-TRIPOD** Tripod Mounting Base Accessory



**Fluke. Not just infrared.**  
*Infrared you can use.™*

**Fluke Corporation**  
PO Box 9090, Everett, WA 98206 U.S.A.

**Fluke Europe B.V.**  
PO Box 1186, 5602 BD  
Eindhoven, The Netherlands

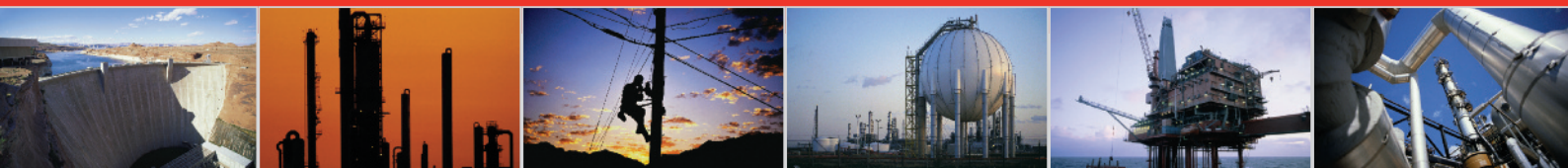
**For more information call:**  
In the U.S.A. (800) 443-5853 or  
Fax (425) 446-5116  
In Europe/M-East/Africa +31 (0) 40 2675 200 or  
Fax +31 (0) 40 2675 222  
In Canada (800)-36-FLUKE or  
Fax (905) 890-6866  
From other countries +1 (425) 446-5500 or  
Fax +1 (425) 446-5116  
Web access: <http://www.fluke.com>

©2009 Fluke Corporation.  
Specifications subject to change without notice.  
Printed in U.S.A. 8/2009 3467124D D-EN-N

**Modification of this document is not permitted  
without written permission from Fluke Corporation.**



# INLEC, supporting you to deliver a world class service, every day, in every sector ...



## OUR COMMITMENT TO YOU

### A wealth of knowledge and experience.

You can take advantage of expert advice to ensure you get the best, most appropriate and cost effective equipment for the job. We supply a wide variety of industries, so if there is another way to do the job or save you time and money we'll pass on the benefit of our experience for free.

### Honest advice, just a phone call away.

If we don't have a particular item, rather than hiring you something that won't do the job, we would rather direct you to an alternative supplier. You will always be provided with full instructions and if you still need help, call our technical team on Nationwide Low Call 0333 6000 600. Our aim is to save you time, frustration and money.

### Top quality equipment from major manufacturers.

With Inlec you'll get the most accurate, reliable and well-maintained equipment available. Prices are regularly reviewed to ensure you always enjoy the best value for money. We have made a significant investment in test equipment so we ensure that it's well packed to minimise damage and delay.

### We really do listen to you.

You won't waste your time contacting Inlec. Every request for equipment is logged and carefully considered. Listening to our customers helps keep our product range up to date and relevant. If you are unhappy about any aspect of our service please let us know so we can put it right.

## YOUR 5 WAY GUARANTEE

### 1 GUARANTEE SAME DAY DESPATCH

We understand why prompt delivery is important to you. So, if we confirm your order before 3pm, you are guaranteed same day despatch.

### 2 OUR PRICE GUARANTEE

Inlec guarantee you real value for money. Our price match policy is simple - if you can hire the same product for less elsewhere, we guarantee to match that price and reduce it by a further 10% of the difference - and still deliver our industry leading technical and customer support.

For full details check our price-match guarantee online

### 3 TOP QUALITY GUARANTEED

All equipment is thoroughly checked prior to dispatch to ensure you receive it in full, safe working order. Your shipment will be securely packed and include manufacturer's instructions, accessories or consumables and a valid calibration certificate where appropriate. In addition, Inlec offer a 24 hour replacement service if you decide the equipment is not suitable for your application\*.

### 4 FRIENDLY, KNOWLEDGEABLE ADVICE GUARANTEED

Inlec are happy to provide you with free advice, from an unbeatable team of experienced, knowledgeable and friendly engineers and hire experts.

### 5 YOUR GUARANTEE OF THE BEST CUSTOMER SERVICE

Throughout your hire we will work hard to ensure you enjoy the very best in support and service from Inlec. We guarantee you won't find better service anywhere in the industry.

\*subject to availability and conditions

## Europe's leading Test Equipment Hire Specialist



LAB NO. 0535



Nationwide Low Call **0333 6000 600**  
Online: **www.inlec.com**

Inlec UK Ellerbeck Way, Stokesley Business Park, Stokesley N Yorkshire TS9 5JZ United Kingdom

