

EUROPE'S LARGEST SELECTION OF TEST & MEASUREMENT EQUIPMENT FOR HIRE

**INLEC.COM**

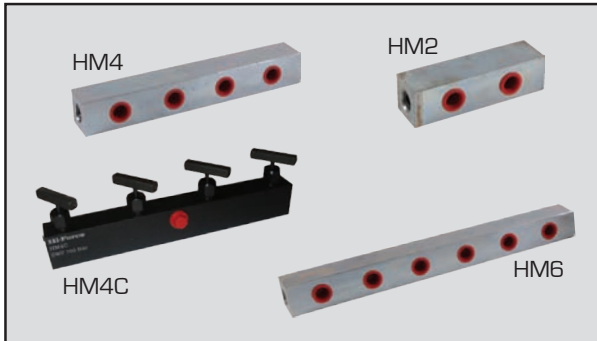
# DATA-SHEET



Nationwide Low Call  
**0333 6000 600**

**WHY BUY**  
WHEN YOU CAN HIRE

## MANIFOLDS



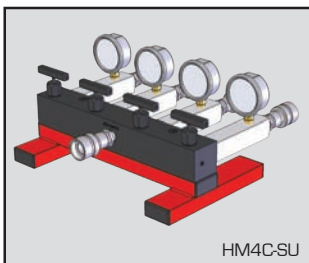
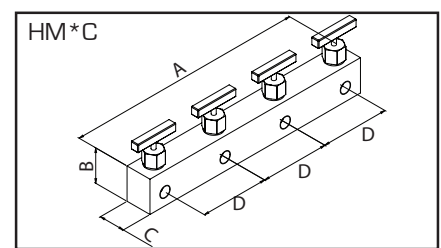
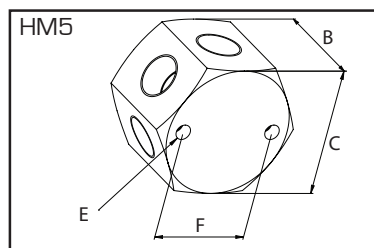
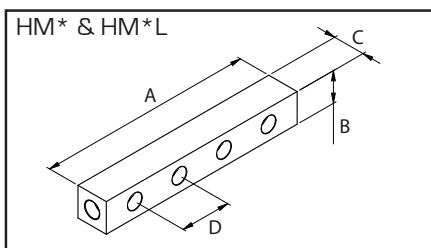
Working pressure 700 Bar

Choice of open or controlled manifolds

2, 4, 5, 6 or 8 outlet port models available

Hi-Force manifolds are designed specifically to allow easy control of the direction of flow of the hydraulic fluid within the system. Supplied either as open manifold blocks or with individual needle type shut off/throttle valves on each 3/8" NPT outlet, Hi-Force manifolds provide even greater versatility in your hydraulic system. The range offers 9 models with a choice of up to 8 outlets per manifold and all models are suitable for 700 Bar maximum working pressure.

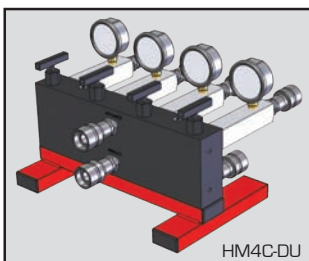
Model number	Type	Design	Number of outlets	Female Threads		Weight kg	Dimensions in mm					
				Inlet	Outlet		A	B	C	D	E	F
<b>HM2</b>	manifold	parallel	2	3/8"-18NPT	2 x 3/8"-18NPT	1.0	114	32	32	50	-	-
<b>HM4</b>	manifold	parallel	4	3/8"-18NPT	4 x 3/8"-18NPT	1.5	214	32	32	50	-	-
<b>HM5</b>	manifold	hexagon	5	3/8"-18NPT	5 x 3/8"-18NPT	0.7	-	41	51	-	M6	38
<b>HM6</b>	manifold	parallel	6	3/8"-18NPT	6 x 3/8"-18NPT	2.0	314	32	32	50	-	-
<b>HM8</b>	manifold	parallel	8	3/8"-18NPT	8 x 3/8"-18NPT	2.5	414	32	32	50	-	-
<b>HM4L</b>	manifold	extended parallel	4	3/8"-18NPT	4 x 3/8"-18NPT	2.4	394	32	32	110	-	-
<b>HM6L</b>	manifold	extended parallel	6	3/8"-18NPT	6 x 3/8"-18NPT	3.7	614	32	32	110	-	-
<b>HM2C</b>	controlled manifold	parallel	2	3/8"-18NPT	2 x 3/8"-18NPT	2.0	150	51	38	100	-	-
<b>HM4C</b>	controlled manifold	parallel	4	3/8"-18NPT	4 x 3/8"-18NPT	3.5	350	51	38	100	-	-



**Model no. Description**

**HM4C-SU** 4-Way controlled manifold unit, suitable for single acting systems.

Supplied complete with four pressure gauges, reading 0-700 bar, female coupler on inlet port and four female couplers on outlet ports. All mounted on a sturdy framework.



**Model no. Description**

**HM4C-DU** 4-Way controlled manifold unit, suitable for double acting systems.

Supplied complete with four pressure gauges, reading 0-700 bar, female coupler on inlet port and four female couplers on outlet ports. Also included is a 4-way open manifold for return flow, again with female couplers on inlet and outlet ports. All mounted on a sturdy framework.

# INLEC, supporting you to deliver a world class service, every day, in every sector ...



## OUR COMMITMENT TO YOU

### A wealth of knowledge and experience.

You can take advantage of expert advice to ensure you get the best, most appropriate and cost effective equipment for the job. We supply a wide variety of industries, so if there is another way to do the job or save you time and money we'll pass on the benefit of our experience for free.

### Honest advice, just a phone call away.

If we don't have a particular item, rather than hiring you something that won't do the job, we would rather direct you to an alternative supplier. You will always be provided with full instructions and if you still need help, call our technical team on Nationwide Low Call 0333 6000 600. Our aim is to save you time, frustration and money.

### Top quality equipment from major manufacturers.

With Inlec you'll get the most accurate, reliable and well-maintained equipment available. Prices are regularly reviewed to ensure you always enjoy the best value for money. We have made a significant investment in test equipment so we ensure that it's well packed to minimise damage and delay.

### We really do listen to you.

You won't waste your time contacting Inlec. Every request for equipment is logged and carefully considered. Listening to our customers helps keep our product range up to date and relevant. If you are unhappy about any aspect of our service please let us know so we can put it right.

## YOUR 5 WAY GUARANTEE

### 1 GUARANTEE SAME DAY DESPATCH

We understand why prompt delivery is important to you. So, if we confirm your order before 3pm, you are guaranteed same day despatch.

### 2 OUR PRICE GUARANTEE

Inlec guarantee you real value for money. Our price match policy is simple - if you can hire the same product for less elsewhere, we guarantee to match that price and reduce it by a further 10% of the difference - and still deliver our industry leading technical and customer support.

For full details check our price-match guarantee online

### 3 TOP QUALITY GUARANTEED

All equipment is thoroughly checked prior to dispatch to ensure you receive it in full, safe working order. Your shipment will be securely packed and include manufacturer's instructions, accessories or consumables and a valid calibration certificate where appropriate. In addition, Inlec offer a 24 hour replacement service if you decide the equipment is not suitable for your application\*.

### 4 FRIENDLY, KNOWLEDGEABLE ADVICE GUARANTEED

Inlec are happy to provide you with free advice, from an unbeatable team of experienced, knowledgeable and friendly engineers and hire experts.

### 5 YOUR GUARANTEE OF THE BEST CUSTOMER SERVICE

Throughout your hire we will work hard to ensure you enjoy the very best in support and service from Inlec. We guarantee you won't find better service anywhere in the industry.

\*subject to availability and conditions

## Europe's leading Test Equipment Hire Specialist



LAB NO. 0535



Nationwide Low Call 0333 6000 600

Online: [www.inlec.com](http://www.inlec.com)

Inlec UK Ellerbeck Way, Stokesley Business Park, Stokesley N Yorkshire TS9 5JZ United Kingdom



CERT. NO. GB93/1773



Accredited Contractor