

EUROPE'S LARGEST SELECTION OF TEST & MEASUREMENT EQUIPMENT FOR HIRE

INLEC.COM

DATA-SHEET



Nationwide Low Call
0333 6000 600

WHY BUY
WHEN YOU CAN HIRE

See for yourself, with real inside insight.

The Hilti PS 1000 X-Scan system detects reinforcing bars, pre- and post-tensioning tendons, metal pipes, plastic pipes, electric cables and glass-fiber cables in next to no time – even over large concrete areas. Equipped with three radar antennas, the PS 1000 scanner finds concealed objects at depths of up to 300 mm. Scan results are presented on the X-Scan display for immediate analysis or can be transferred to the PSA 100 monitor for further evaluation. Thanks to its ease of operation, on-site handling and the easily interpretable 3D images of concealed objects it produces, the Hilti PS 1000 X-Scan system simply takes non-destructive structural inspection into a new era.



Applications

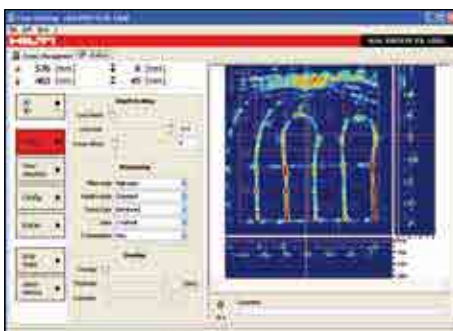
- Non-destructive inspection and detection of concealed objects in steel-reinforced and prestressed concrete structures
- Detecting metal or plastic pipes and electric cables to avoid damage when drilling
- Locating rebars for post-installed rebar connections

Advantages

- Locates objects of various kinds in concrete structures, even beneath reinforcing mesh
- Displays a clear, real-time 2D image directly on the Hilti PS 1000 display
- Processed 2D and 3D plan view or cross-sectional images are displayed in color on the PSA 100 monitor unit for further on-the-spot evaluation of the data or printing

Highlights

X-Scan, because it's Xtra fast. A compact, cordless system consisting of scanner, monitor and PC software. Quickly ready for use, easy to operate and featuring high memory capacity for clearly interpretable color images of the objects concealed in concrete structures, allowing immediate analysis.



Advanced software with comprehensive evaluation and analysis features for the creation of reports and documentation.

Performance data

	PS 1000 X-Scan
Detection range	max. 300 mm, see op. instructions
Localization accuracy	± 10 mm, see op. instructions
Depth measurement accuracy	± 10 mm, see op. instructions
IP protection class	IP 54
Operating temperature range	– 10 to + 50° C
Battery life, scanner / monitor	4 h / 2 h with Li-ion battery pack
Dimensions / weight, scanner	318 x 190 x 143 mm / 2.5 kg
Dimensions / weight, monitor	292 x 208 x 65 mm / 2.3 kg

We reserve the right to make technical changes.



Imagescan

- Scans large areas of concrete in a grid pattern
- Locates metal and plastic pipes as well as electric cables and conduits at depths of up to 300 mm in dry concrete
- Detects objects located behind reinforcing mesh
- Shows objects in a 2D or 3D plan view and cross-sectional view for immediate analysis



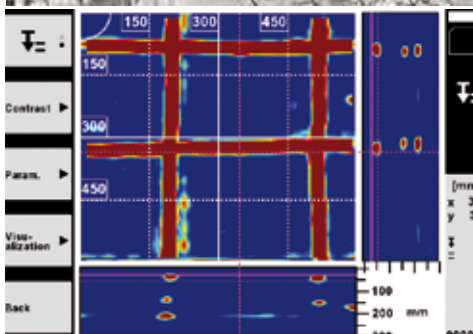
Quickscan Detektion

- Quickly locates various objects in concrete, allowing their positions to be marked directly on the working surface

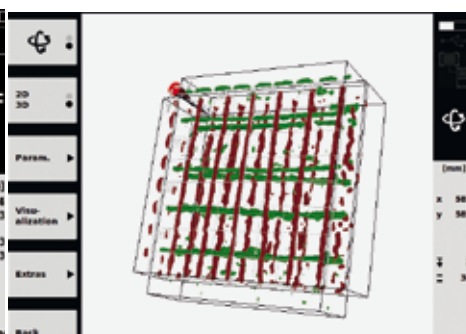


Quickscan recording

- Scans stretches of up to 10 m in length, quickly and easily
- Shows objects in 2D or 3D plan views and cross-sectional views
- Handy extension available for easy floor scanning

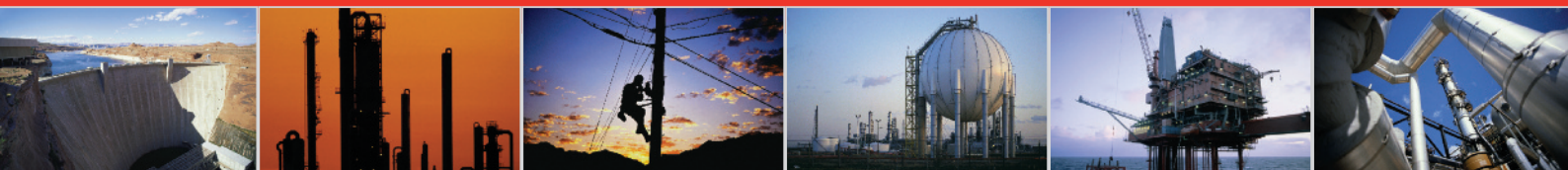


2D representation of an Imagescan shown as a plan view and cross-sectional views on the PS 1000 display.



3D Imagescan (plan views, cross-sectional views) for on-the-spot visualization and analysis on the PSA 100 monitor.

INLEC, supporting you to deliver a world class service, every day, in every sector ...



OUR COMMITMENT TO YOU

A wealth of knowledge and experience.

You can take advantage of expert advice to ensure you get the best, most appropriate and cost effective equipment for the job. We supply a wide variety of industries, so if there is another way to do the job or save you time and money we'll pass on the benefit of our experience for free.

Honest advice, just a phone call away.

If we don't have a particular item, rather than hiring you something that won't do the job, we would rather direct you to an alternative supplier. You will always be provided with full instructions and if you still need help, call our technical team on Nationwide Low Call 0333 6000 600. Our aim is to save you time, frustration and money.

Top quality equipment from major manufacturers.

With Inlec you'll get the most accurate, reliable and well-maintained equipment available. Prices are regularly reviewed to ensure you always enjoy the best value for money. We have made a significant investment in test equipment so we ensure that it's well packed to minimise damage and delay.

We really do listen to you.

You won't waste your time contacting Inlec. Every request for equipment is logged and carefully considered. Listening to our customers helps keep our product range up to date and relevant. If you are unhappy about any aspect of our service please let us know so we can put it right.

YOUR 5 WAY GUARANTEE

1 GUARANTEE SAME DAY DESPATCH

We understand why prompt delivery is important to you. So, if we confirm your order before 3pm, you are guaranteed same day despatch.

2 OUR PRICE GUARANTEE

Inlec guarantee you real value for money. Our price match policy is simple - if you can hire the same product for less elsewhere, we guarantee to match that price and reduce it by a further 10% of the difference - and still deliver our industry leading technical and customer support.

For full details check our price-match guarantee online

3 TOP QUALITY GUARANTEED

All equipment is thoroughly checked prior to dispatch to ensure you receive it in full, safe working order. Your shipment will be securely packed and include manufacturer's instructions, accessories or consumables and a valid calibration certificate where appropriate. In addition, Inlec offer a 24 hour replacement service if you decide the equipment is not suitable for your application*.

4 FRIENDLY, KNOWLEDGEABLE ADVICE GUARANTEED

Inlec are happy to provide you with free advice, from an unbeatable team of experienced, knowledgeable and friendly engineers and hire experts.

5 YOUR GUARANTEE OF THE BEST CUSTOMER SERVICE

Throughout your hire we will work hard to ensure you enjoy the very best in support and service from Inlec. We guarantee you won't find better service anywhere in the industry.

*subject to availability and conditions

Europe's leading Test Equipment Hire Specialist



LAB NO. 0535



Nationwide Low Call **0333 6000 600**
Online: **www.inlec.com**

Inlec UK Ellerbeck Way, Stokesley Business Park, Stokesley N Yorkshire TS9 5JZ United Kingdom

