

EUROPE'S LARGEST SELECTION OF TEST & MEASUREMENT EQUIPMENT FOR HIRE

INLEC.COM

DATA-SHEET



Nationwide Low Call
0333 6000 600

WHY BUY
WHEN YOU CAN HIRE

GMO7 & GMO8 Gaussmeters

For Magnetic Measurements

Menu Driven/Selectable Units
(Tesla, Amp/m, Gauss, Oersted s)

Selectable Functions/Hand-Held

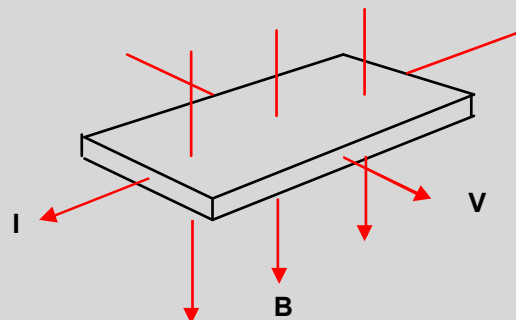
FEATURES

- Graphical LCD display
- USB & RS232 (GMO8)
- Menu Driven
- Multi lingual
- DC, AC, PEAK, MAX, HOLD and STORE functions
- Operating Function and Units displayed
- Analogue Output (GMO8)
- Thin semi-flexible probe
- Visible measurement point
- Probe polarity indication
- Battery operated
- External power supply connection (GMO8 only)



Hirst Magnetic Instruments GM07 and GM08 represents the second generation of microprocessor controlled Gaussmeters using the best of Digital Signal Processing (DSP) and Analogue Techniques to offer sophisticated measuring functions in a simple to use, menu driven, hand held package.

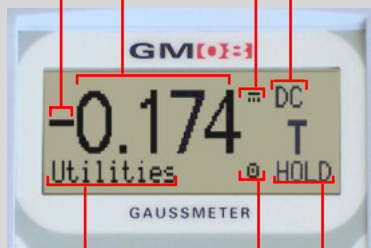
Designed for factory floor, on site and laboratory measurement of Magnetic flux Density and Magnetic Field Strength in SI or cgs, these instruments give excellent value for money.



Measurement value Measurement units

Polarity

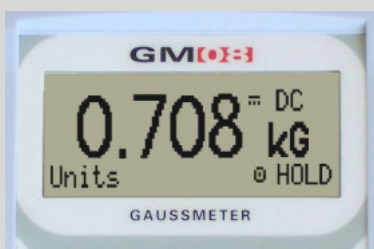
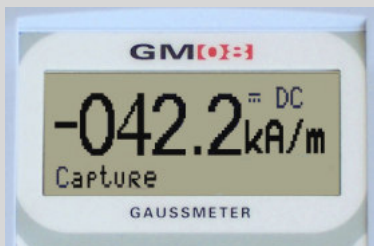
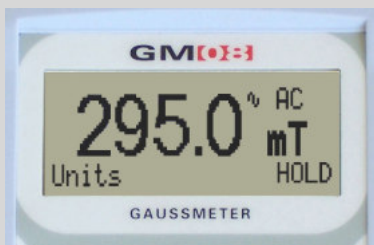
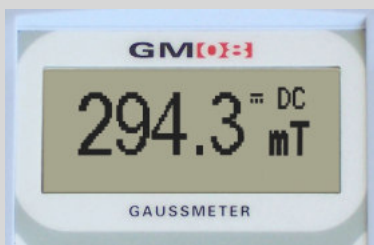
Measurement Function



Menu option

Manual range

Display Status



INTRODUCTION

The GMO7 and GMO8 Gaussmeters have been designed and manufactured by Hirst Magnetic Instruments Ltd. A company with more than 50 years experience in Magnetic Measurement. This experience together with our extensive knowledge of the magnetics market has enabled us to design an instrument incorporating all the measurement functions a user is likely to need. The GMO7/O8 is controlled via a simple menu and is supplied with a thin semi-flexible Transverse Hall Probe suitable for all but the very smallest applications.

FUNCTIONS

An easy to use menu enables you to change settings which are automatically stored when you switch off. On switch on it automatically remembers its previous setting.



Measurement functions

The GMO7/O8 can measure:

- DC DC magnetic field measurement
- DC PEAK Maximum positive peak reading of the DC field
- AC RMS True RMS (Root mean Square) of input signal
- AC MAX RMS Maximum true RMS (Root mean Square)
- AC PEAK Maximum positive peak reading of the AC field

Measurement Units

The GMO7/O8 can measure in Tesla, Amps/m, Gauss or Oersted. Saved readings can be automatically converted between measurement units.

Data captures

The GMO7/O8 can HOLD measured values by pressing the Hall Probe button. Pressing the button again releases HOLD (when enabled).

The GMO7/O8 can also STORE up to 100 measurements. These values can later be RECALLED, either on the Gaussmeter or via USB/RS232 with the GMO8.

Utilities

The GMO7/O8 has a number of utilities options allowing the operator to disable or select various times for the automatic POWER DOWN. Nulling routines may also be selected.

The GMO7/O8 also has a facility to operate its menu structure in English, French, Spanish, Italian, German and Portuguese.

Display Status

When active, the status display is always in the top right hand corner, while the menu option display is in the bottom left hand corner.

COMMUNICATIONS

The GMO8 features an interface to provide USB communication, RS232 remote control of the GMO8 and the uploading of measurements and data.

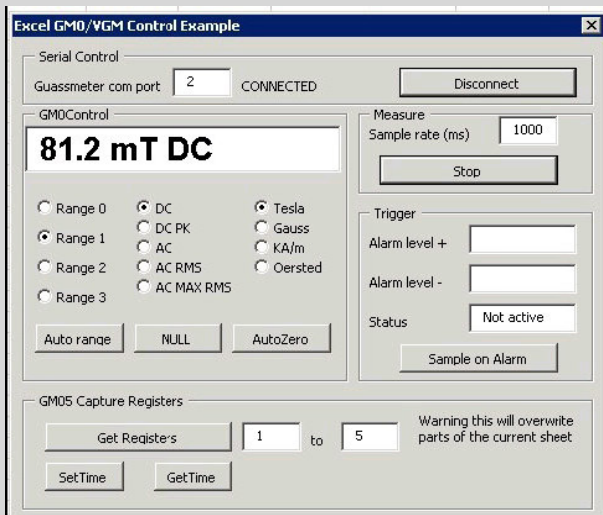
The GMO7/O8 also incorporates a non volatile memory to enable the retention of stored values even when switched off and to retain instrument settings.

The GMO8 also includes a time keeping device to record the time data is stored and an external DC power supply socket for bench top applications.

SOFTWARE

Windows communication software is supplied with the GMO8. This allows the user to download readings, stored data and control the instrument remotely via USB or RS232 interfaces.

Data can be downloaded to Excel or open office spreadsheets, or to a CSV format file.



A full driver suite is available as an optional extra. This includes sample programmes with full source code (Microsoft Visual C++.NET) for the 2000 operating system, XP and later. A simple DLL allows third party integration of the GMO8 into embedded systems. A lab-view VI is included. Linux is also supported.

CALIBRATION

The GMO7/O8 is calibrated to standards traceable to the National Physical Laboratories (London UK).

During manufacture, the accuracy of nuclear magnetic resonance is used to determine the irregularities and non conformities of the GMO7/O8 and its Hall Probe. This is stored and used mathematically to automatically correct readings taken by the GMO7/O8.

APPLICATIONS

The GMO7 and the GMO8 are ideal for inspection and measurement of magnetic flux density of magnets and magnetic assemblies in both goods inward and Quality Assurance environments.

Where individual measurements need to be recorded the GMO8 will store and upload not only the measured values, polarity, measurement units and measurement function, but also the time at which the measurement was taken.

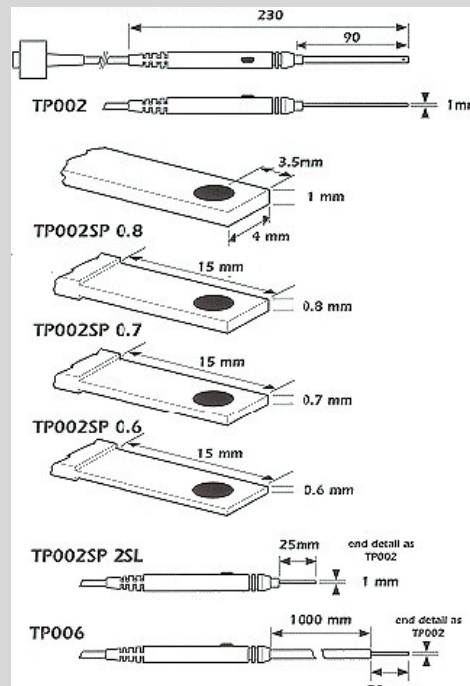
Applications include:

- Computer disk Drive Actuators,
- Loudspeaker Air Gaps
- Electric Motor air gaps
- Transformer Stray Field measurements
- Bending magnets
- Non destructive Testing (Magnetic)
- Goods inward and Quality Assurance Inspection
- Automated magnet calibration

PROBES

Both the GMO7 & the GMO8 are supplied with transverse hall probe (TP002) as standard.

TRANVERSE PROBES

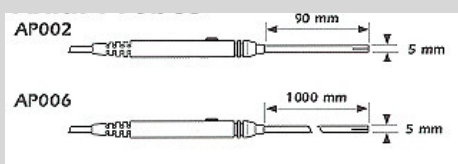


The probe is fitted with a push button enabling the operator to HOLD and STORE measurements and orientate the probe for polarity readings.

All transverse and axial probes are fully interchangeable with Hirst Magnetic Instruments Ltd's GMO4, GMO5, V G M O 1, BGMO1, GMO7 & GMO8 gaussmeters.

Custom Axial and Transverse probes are also available. Please contact the sales office for more information.

AXIAL PROBES



GMO7 & GMO8 SPECIFICATIONS

Model	GMO7 & GMO8	
Range 1	0.000 - ±3.000 Tesla	(00.00 - ±30.00 kiloGauss)
Range 2	000.0 - ±299.9 milliTesla	(0.000 - ±2.999 kiloGauss)
Range 3	00.00 - ±29.99 milliTesla	(000.0 - ±299.9 kiloGauss)
Range 4	00.00 - ±2.999 milliTesla	(00.00 - ±29.99 kiloGauss)
Frequency Range	DC and 15 Hz to 10 kHz	
Units	Tesla, Gauss, Amps/m or Oersted	
Functions	DC, DC peak, AC RMS, AC PEAK, AC MAX	
Accuracy	Better than ±1% Probe and Gaussmeter (NPL Traceable)	
Reproducibility	±0.5%	
Averaging time contact	100 milliseconds	
Display Sampling rate	3 readings per second	
Display	Dot Matrix Graphics LCD	
Memory type	Non-volatile	
Temperature coefficient	Better than ±0,1 % of reading/°C including probe	
Battery Type	4 x AA cells Longlife 1,5V Alkaline	
Temperature: - Operating - Storage	0°C - 50°C 20°C - 70°C	(30°F + 125°F) (70°F + 150°F)
Dimensions: - Length: - Width; - Height:	175 mm 89 mm 40 mm	(6.9 in) (3.5 in) (1.6 in)
Weight: (not including probe)	430 g (15 oz)	

GM08 ADDITIONAL FEATURES

USB and RS232	Used for data transfer and remote control. Software handshaking. USB 1.1 Compliant
Analogue Output	+/-3 Volts full scale
Time keeping	Stored data is time stamped
External PSU Socket	Included - 5V/6V (100-500mA)
PC Software	Windows communication software

Hirst Magnetic Instruments Ltd. design a wide range of standard, special and custom magnetic instruments, equipment and turnkey systems including Integrating Fluxmeters, pulsed Field Magnetometers, VSMs Permeameters, Magnetisers, Demagnetisers, Calibrators and Magnetic Solenoids. www.hirst-magnetics.com for more information.

WHAT YOU GET



GMO8 inclusive package

- GMO8 Gauss meter
- TP 002 Transverse Probe
- Zero Flux Chamber
- Instruction manual
- Calibration Certificate
- Hard plastic carrying case
- USB Lead
- RS232 Lead
- Analogue adaptor to allow BNC connections
- Software disk



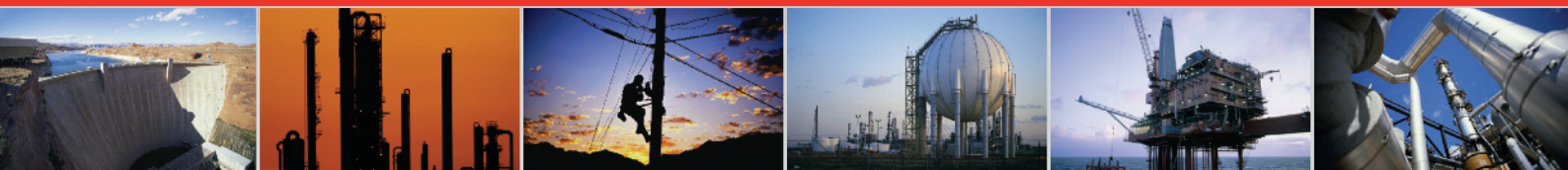
GMO7 inclusive package

- GM07 Gauss meter
- TP 002 Transverse Probe
- Zero Flux Chamber
- Instruction manual
- Calibration Certificate
- Hard plastic carrying case

OPTIONS

- Axial Probe AP002
- Other standard and custom probes
- Additional PC Software Disc (GMO8)

INLEC, supporting you to deliver a world class service, every day, in every sector ...



OUR COMMITMENT TO YOU

A wealth of knowledge and experience.

You can take advantage of expert advice to ensure you get the best, most appropriate and cost effective equipment for the job. We supply a wide variety of industries, so if there is another way to do the job or save you time and money we'll pass on the benefit of our experience for free.

Honest advice, just a phone call away.

If we don't have a particular item, rather than hiring you something that won't do the job, we would rather direct you to an alternative supplier. You will always be provided with full instructions and if you still need help, call our technical team on Nationwide Low Call 0333 6000 600. Our aim is to save you time, frustration and money.

Top quality equipment from major manufacturers.

With Inlec you'll get the most accurate, reliable and well-maintained equipment available. Prices are regularly reviewed to ensure you always enjoy the best value for money. We have made a significant investment in test equipment so we ensure that it's well packed to minimise damage and delay.

We really do listen to you.

You won't waste your time contacting Inlec. Every request for equipment is logged and carefully considered. Listening to our customers helps keep our product range up to date and relevant. If you are unhappy about any aspect of our service please let us know so we can put it right.

YOUR 5 WAY GUARANTEE

1 GUARANTEE SAME DAY DESPATCH

We understand why prompt delivery is important to you. So, if we confirm your order before 3pm, you are guaranteed same day despatch.

2 OUR PRICE GUARANTEE

Inlec guarantee you real value for money. Our price match policy is simple - if you can hire the same product for less elsewhere, we guarantee to match that price and reduce it by a further 10% of the difference - and still deliver our industry leading technical and customer support.

For full details check our price-match guarantee online

3 TOP QUALITY GUARANTEED

All equipment is thoroughly checked prior to dispatch to ensure you receive it in full, safe working order. Your shipment will be securely packed and include manufacturer's instructions, accessories or consumables and a valid calibration certificate where appropriate. In addition, Inlec offer a 24 hour replacement service if you decide the equipment is not suitable for your application*.

4 FRIENDLY, KNOWLEDGEABLE ADVICE GUARANTEED

Inlec are happy to provide you with free advice, from an unbeatable team of experienced, knowledgeable and friendly engineers and hire experts.

5 YOUR GUARANTEE OF THE BEST CUSTOMER SERVICE

Throughout your hire we will work hard to ensure you enjoy the very best in support and service from Inlec. We guarantee you won't find better service anywhere in the industry.

*subject to availability and conditions

Europe's leading Test Equipment Hire Specialist



LAB NO. 0535



Nationwide Low Call 0333 6000 600

Online: www.inlec.com

Inlec UK Ellerbeck Way, Stokesley Business Park, Stokesley N Yorkshire TS9 5JZ United Kingdom



CERT. NO. GB93/1773



Accredited Contractor