

EUROPE'S LARGEST SELECTION OF TEST & MEASUREMENT EQUIPMENT FOR HIRE

**INLEC.COM**

# DATA-SHEET



Nationwide Low Call  
**0333 6000 600**

**WHY BUY**  
WHEN YOU CAN HIRE

# sebaKMT UK

Now certified to comply with European Standards

**EN 61010**

EG - Konformitätserklärung

EC - Declaration of Conformity

CE - Déclaration de Conformité

## ***EZ-THUMP™***

***Model 2 & 3***



***“See the Fault”***  
***The location of fault is displayed***

***Power***  
***500 Joule***  
***Operation***

***Option !***  
***Live Trace for***  
***Fault Verification***

## ***SMART FAULT LOCATION TOOL***

***....push 2 buttons, never adjust anything !***

# Technical Specifications *EZ-THUMP*™

**The *EZ-THUMP* is a compact & light weight, battery and or AC mains operated fault locating system for primary URD cables. It is ideally suited for use in a “satellite” fault locating concept for out-laying areas with a lesser fault frequency, when speed, simple operation, weight and economics are the driving factors. Unit requires no adjustments and is operated via “Yes”/“NO” push buttons.**

## **Energy / Voltage Output**

500Joules @ 12kV

or 500 Joules @ 4kV

## **DC Hipot Output**

voltage is adjustable 0kV – 12kV

or 0kV – 4kV

includes indication of Breakdown Voltage

## **Measuring Range:**

up to 25,000 ft

## **Fault Locating Method**

-TDR Mode to determine end of cable

-Arc Reflection Method to get distance to fault  
4kV or 12 kV pulse

## **Fault Distance Accuracy:**

< 2.5 feet depending on displayed range

## **Pinpointing Method**

Adjustable thump voltage up to 4kV

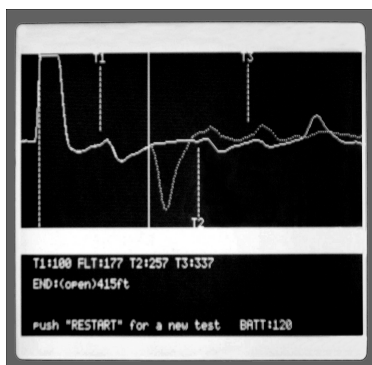
or up to 12kV

<10 second thumping cycle

## **Display Screen:**

**EZ Model 2 4 x 40 Alpha Numeric LCD**

**EZ Model 3 320 x 240 Graphic LCD**



## **Convenience Features:**

- Pre-locate and Pinpoint using only one tool
- Computer controlled automatic fault locating procedure
- Unit is operated via push buttons
- No special operator training required

## **Safety Features:**

- Operator always in full control of HV output
- “Emergency Off” Red button will safely discharge and power unit off
- Key Switch Interlock
- Auto “Time out” discharges and grounds unit and resets it to “Ready position”

## **Power Supply:**

**Internal** 12V Battery 10 AH (full charge will last for 30 minutes of pinpointing – thumping)

**External** 110/230V AC Charger to 12VDC  
3 LED charging indication

## **Outdoor Suitability**

Rugged design, weather proof  
High impact resistant PP enclosure  
Stainless steel lid and hardware  
Operating Temperature:

-20 °C + 50 °C (-5 °F to 122°F)

## **Leads / Terminations**

4.6m HV cable MC Con. & Hotline Clamp  
HV return with Hotline Clamp,  
4.6m Ground Cable with Hotline Clamp

**Dimensions:** 36cm x 28cm x 53cm

**Weight:** 32kilo (70lbs)

## **Options**

Cart available

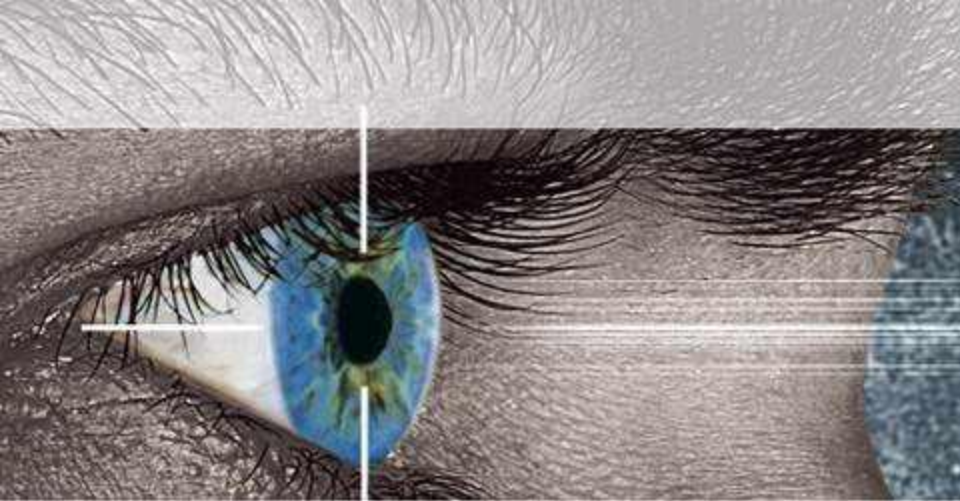
Lead adapters available

SebaKMT UK Ltd  
Unit C Beversbrook Centre,  
Redman Road,  
Calne, Wiltshire, SN11 9PR  
+44 1249 816 181  
Fax: +44 1249 816 186  
sales@sebakmtuk.com

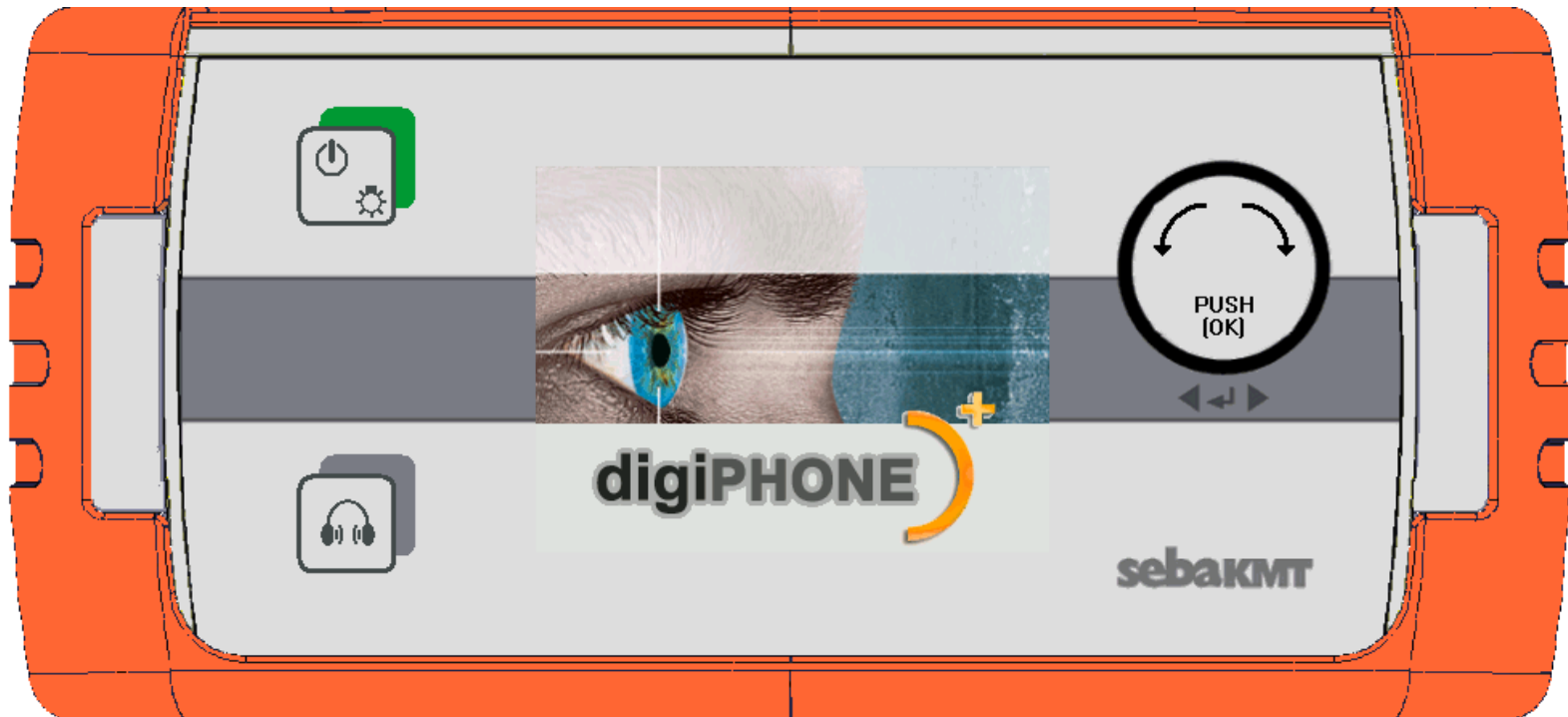




WWW.CABLEJOINTS.CO.UK  
THORNE & DERRICK UK  
TEL 0044 191 490 1547 FAX 0044 477 5371  
TEL 0044 117 977 4647 FAX 0044 977 5582  
WWW.THORNEANDDERRICK.CO.UK



# sebaKMT





# Silence



## Silence

Careful handling, night work and filtering was yesterday

Today we have a new definition of silence

The innovation in fault pinpointing

Several new, innovative methods of the **digiPHONE+** will ensure the silence



The technology that lets you hear the fault – only the fault!

No traffic!

No high heels!

No talking!

No noise!

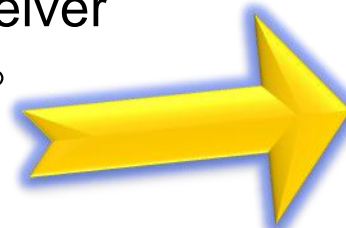
**You hear only what you want to hear,**

- **- “THE” Fault! Nothing else! Your ears will like it!**



## Features

- Highest acoustic quality and external noise immunity
- Automatic Volume Mute with „Bang protection“
- Bright, sun capable display
- Easiest Operation
- Ergonomical, adjustable telescopic handle
- Distance measurement in Milli seconds or meters
- Selectable volume limitation to 84 dB(A)
- Easy tracing with left – right indication
- Fault direction indication
- Automatic adjustment for magnetic and acoustic channel
- Weather proof IP65 Sensor, better IP54 receiver
- High ground stability of the sensor up to 45°
- And...New, high performance connectors!



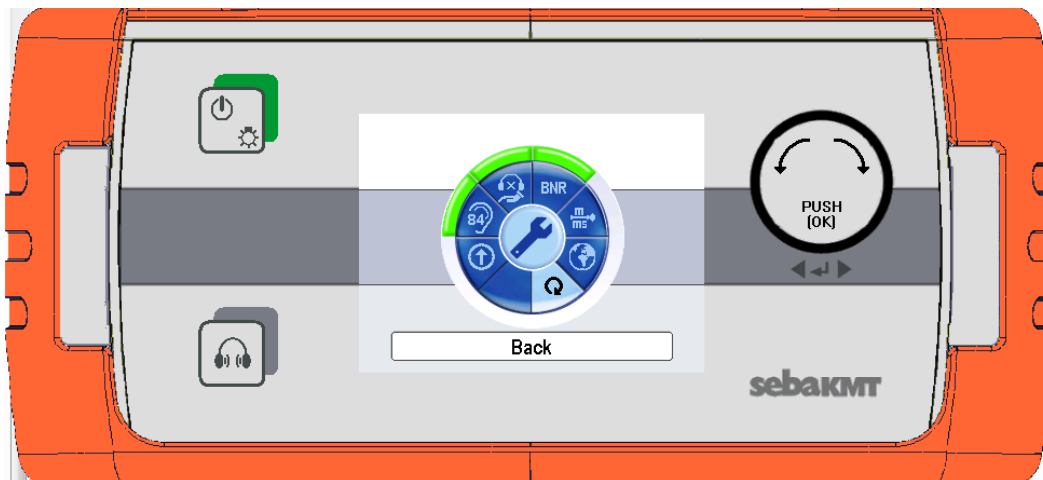


## Operation

Like most new Sebakmt systems, the new **digiPHONE+** is operated by the in the centrix approved jogdial philosophy.

The required possible adjustments are limited to the minimum and need in most cases only once to be adjusted.

But even, if the adjustments need to be changed more frequently, the very Straight forward menue stucture supports an easy navigation







## Noise and Ear protection

The **digiPHONE+** is a pinpointing device, which is generally based on the detection and evaluation of the noises, that result for the flashover at the fault position.

Resulting several new technologies for sound resp. for the reduction of of sound or noise were used.

BNR – Background Noise Reduction

APM – Auto Proximity Mute

A noise reducing construction of the microphone housing

Adjustable filters

84 dB limiter (according to noise and vibration protection laws)

A completely new, soft suspended sound pickup

An easy detachable handle

Explanations will follow!





## Noise reduction

With the new **digiPHONE+**, a new noise reduction technology, the BNR (Background Noise Reduction) was developed

This technology reduces by a specific averaging process the flashover noise to its primary contents.

Disturbing noises disappear and leave an astonishingly clear sound.

The housing itself reduces the body sound significantly by a combination of different composite materials and a free suspension of the microphone

It at all, the noise will come through only very weak





## Bang protection, Automatic Mute

One of the most annoying problems with all ground microphones is the extreme noise during pickup or setting down of the microphone (Bang).

### Automatic Proximity Mute - APM.

The second silent technology of the new Digiphone+.

Get close to the handle and it turns the volume off. No crack or bang. Just off, before the hand even reaches the handle.

After removing the hand, a short time delay ensures that The Sensor has really settled itself into the new position, and any mechanical oscillations have disappeared, before the sound comes back on.



For users, that want to control this still by themselves, there is still the alternative Mute key on the front panel **(in the competitive evaluation, the only key beside the power key!)**





## Working Safety

Research with the previous Digiphone, but also competitive units showed, That in some cases, due to specific exposure to noise, the risk of a hearing loss exists.

The permitted noise exposure is regulated by different local laws or regulations, for example the „Occupational Safety and Health Standards” in the USA

**1910.95(c)(1)** The employer shall administer a continuing, effective hearing conservation program, as described in paragraphs (c) through (o) of this section, whenever employee noise exposures equal or exceed an 8-hour time-weighted average sound level (TWA) of **85 decibels** measured on the A scale (slow response) or, equivalently, a dose of fifty percent. For purposes of the hearing conservation program, employee noise exposures shall be computed in accordance with appendix A and Table G-16a, and without regard to any attenuation provided by the use of personal protective equipment.

When exceeding the permitted 85 db(A) the weekly permitted exposition duration, at least in compliance with the German noise and vibration protection laws, is in the range of only a few minutes!





## Working safety

By a selectable limitation of the maximum permissible noise level to 84 db(A), the use can now safely comply

With the according limiting regulations



But here it should also be clear, that a permanent wearing of the headset is not essentially required.

In many cases it is absolutely sufficient, to trust the display and to check occasionally or only during the final pinpointing the acoustic response of the fault.



## Filter

The audial reception of each uses is subjective and also habitually oriented. The various filter adjustment are also a help to find the setting which suit the specific personal audial reception.

Additionally the selectable filter setting are also comparable with existing sound images as the are typical for specific ground microphones as for example The T 16/841, but also for competitive unists.

Whatever decides the setting of the filters,

- the **digiPHONE+** will guide the user reliably to the fault!





## The System

The **digiPHONE+** System consists of:

the Receiver

the Sensor

and the Headset





## Sensor

Adjustable handle

Exchangeable tips

Active Elektronik – the evaluation happens completely in the sensor!

Housing: Dual shell die casting with telescopic handle

Soft rubber rims for acoustic shielding

Dimensions: Diameter 230mm (at the outer lip)

Height: 140mm

Handle length: 450 ... 750mm

Weight: Sensor mit Teleskopstab ca. 2 kg

Dynamic range: acoustic channel >110dB

Dynamic range: magnetic channel >110dB

Frequency range: 100 ... 1500Hz

4 Filter settings: OFF 100 ... 1500Hz

Low pass 100 ... 400Hz

Band pass 300 ... 500Hz

High pass 700 ... 1500Hz

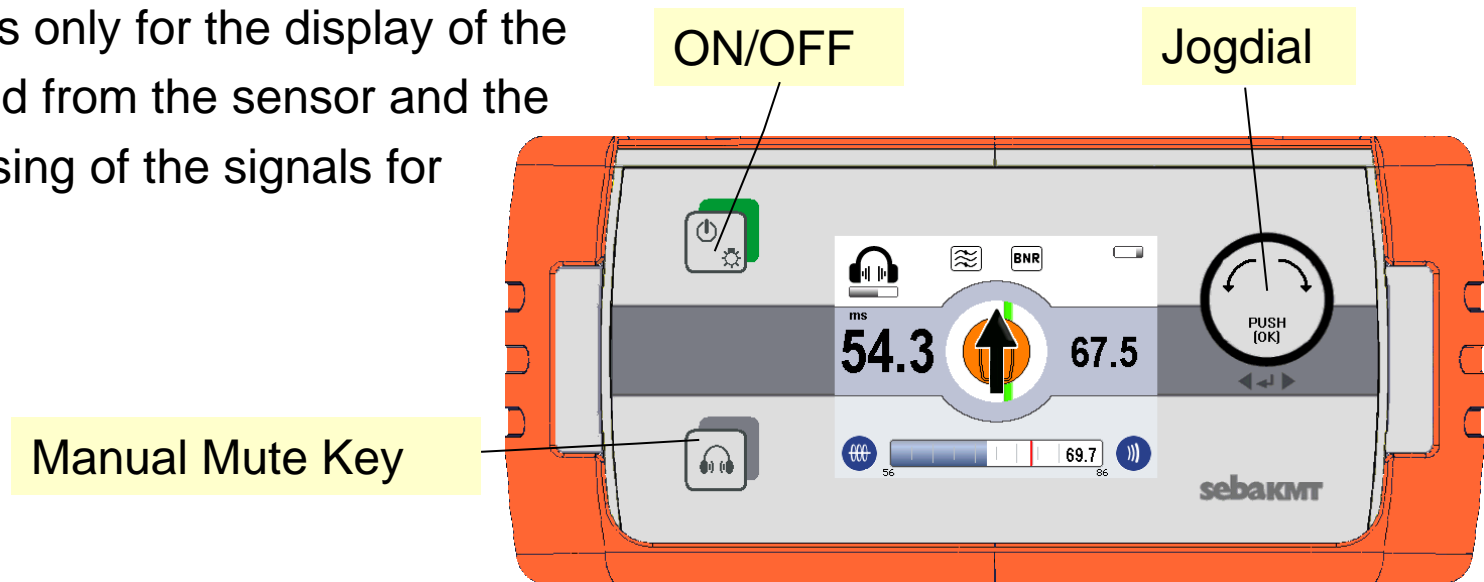






## Receiver

The receiver is only for the display of the data generated from the sensor and the signal processing of the signals for the head set.



Dimensions (with rubber frame): 65 mm x 225 mm x 100mm (H x W x D)

Weight: app. 1kg (incl. Batteries)

Supply: 6 pieces Mignon cells Typ IEC R6 (Alkali-Mangan)

Operation time: @ Mignon cells with 2500 mAh capacity: > 10 Std.

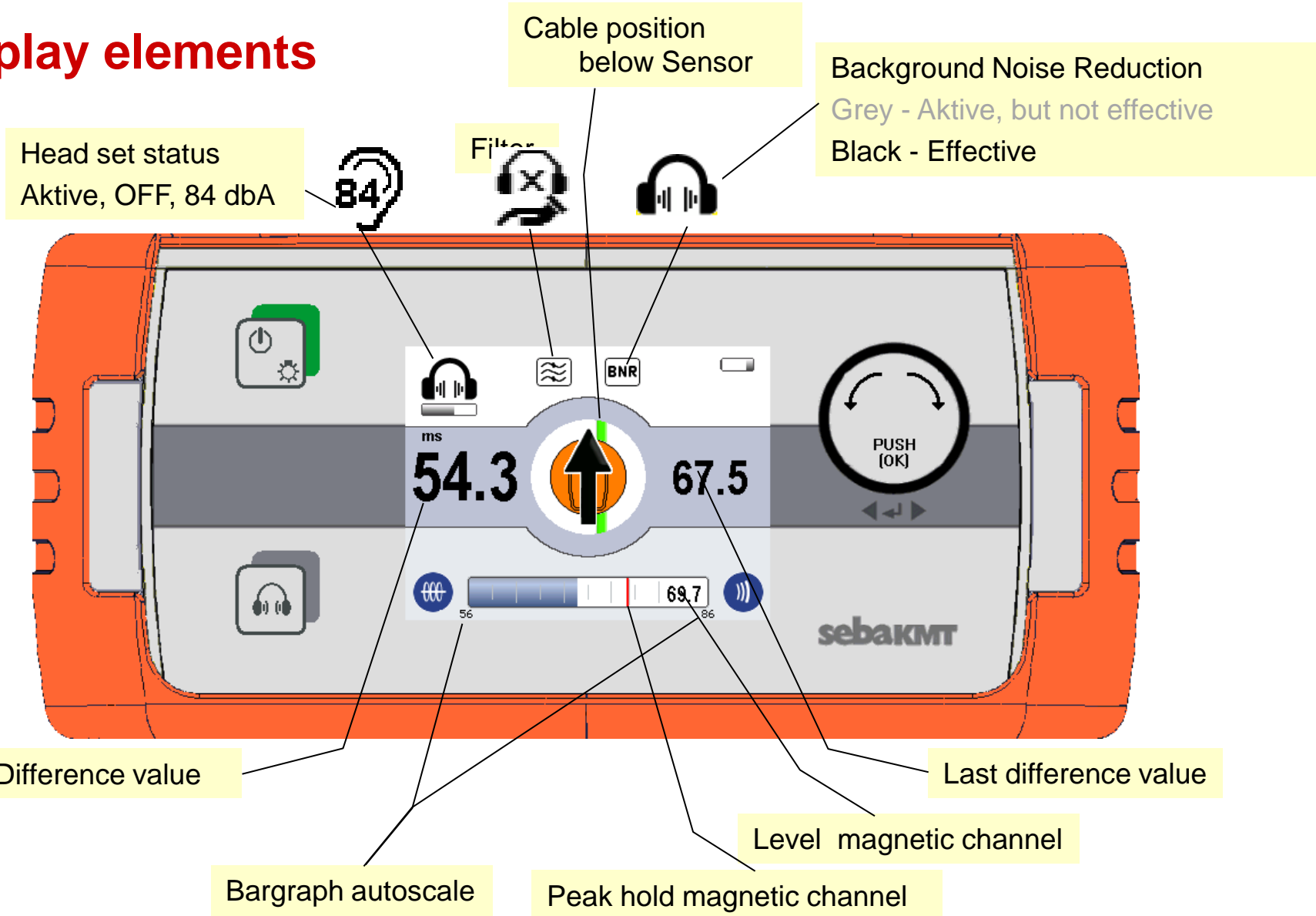
Display: Color TFT - 320x240Pixel

Adjustment: Selectable limitation to 84 dB(A), Volume

Akustic Gain: >120dB



## Display elements



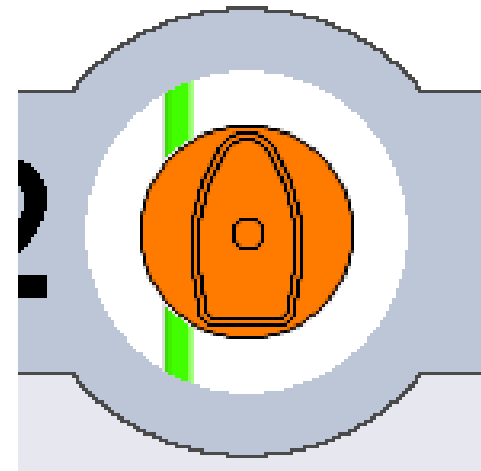
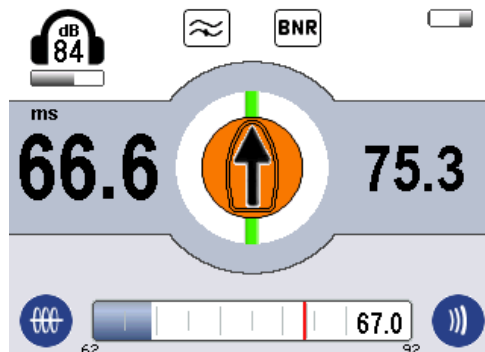


## Tracing

A green cable symbol beneath the sensor symbol in the center of the **digiPHONE+** display shows the side position of the sensor in relation to the cable trace.

This ensures automatically, that the user remains with the sensor directly on top of the cable, which makes the fault location more accurate but also easier. Weak faults are much faster detected and located.

A cross measurement is not required, since the system is positioned automatically in the Y-axis on top of the cable





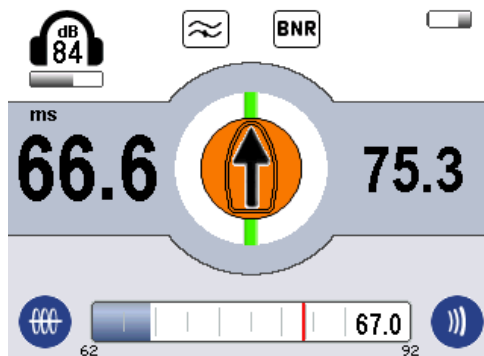
## The Compass

The „Compass“ function of the **digiPHONE+** recognises from the data, especially from the difference time measurement, if the user is moving towards the fault. This is indicated by the arrow in the display. The user follows the arrow and approaches automatically the fault position

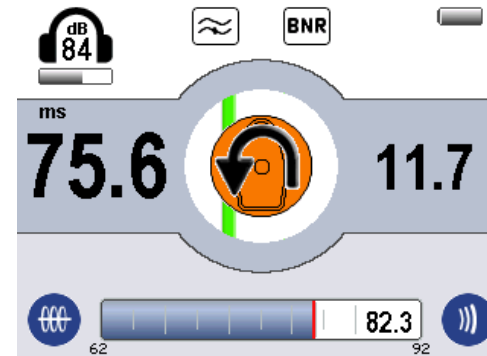


If the **digiPHONE+** detects an increase of the difference time, it means, that the user has passed the fault already. In this case a bent arrow indicates this and requests the user to move backward.

Before the fault:  
The new value is lower than the old difference value



After the fault:  
The new value is higher than the old difference value







## Competiton

The Digiphone (released 1993), as well as its predecessor T 16/8B were the benchmark and handicap for ALL competitors.

Resulting we oriented ourself on these data, but lifted the benchmark in respect to functionality, acoustic, quality and appearance to a new level!  
The **digiPHONE+** is again the trend setter for the pinpointing which sets  
And defines clear limits  
... The technical data reflect this only limited.

Test it ! Let you customer experience and hear the new **digiPHONE+**

The plain data as in the following comparison table mean very little!

# INLEC, supporting you to deliver a world class service, every day, in every sector ...



## OUR COMMITMENT TO YOU

### A wealth of knowledge and experience.

You can take advantage of expert advice to ensure you get the best, most appropriate and cost effective equipment for the job. We supply a wide variety of industries, so if there is another way to do the job or save you time and money we'll pass on the benefit of our experience for free.

### Honest advice, just a phone call away.

If we don't have a particular item, rather than hiring you something that won't do the job, we would rather direct you to an alternative supplier. You will always be provided with full instructions and if you still need help, call our technical team on Nationwide Low Call 0333 6000 600. Our aim is to save you time, frustration and money.

### Top quality equipment from major manufacturers.

With Inlec you'll get the most accurate, reliable and well-maintained equipment available. Prices are regularly reviewed to ensure you always enjoy the best value for money. We have made a significant investment in test equipment so we ensure that it's well packed to minimise damage and delay.

### We really do listen to you.

You won't waste your time contacting Inlec. Every request for equipment is logged and carefully considered. Listening to our customers helps keep our product range up to date and relevant. If you are unhappy about any aspect of our service please let us know so we can put it right.

## YOUR 5 WAY GUARANTEE

### 1 GUARANTEE SAME DAY DESPATCH

We understand why prompt delivery is important to you. So, if we confirm your order before 3pm, you are guaranteed same day despatch.

### 2 OUR PRICE GUARANTEE

Inlec guarantee you real value for money. Our price match policy is simple - if you can hire the same product for less elsewhere, we guarantee to match that price and reduce it by a further 10% of the difference - and still deliver our industry leading technical and customer support.

For full details check our price-match guarantee online

### 3 TOP QUALITY GUARANTEED

All equipment is thoroughly checked prior to dispatch to ensure you receive it in full, safe working order. Your shipment will be securely packed and include manufacturer's instructions, accessories or consumables and a valid calibration certificate where appropriate. In addition, Inlec offer a 24 hour replacement service if you decide the equipment is not suitable for your application\*.

### 4 FRIENDLY, KNOWLEDGEABLE ADVICE GUARANTEED

Inlec are happy to provide you with free advice, from an unbeatable team of experienced, knowledgeable and friendly engineers and hire experts.

### 5 YOUR GUARANTEE OF THE BEST CUSTOMER SERVICE

Throughout your hire we will work hard to ensure you enjoy the very best in support and service from Inlec. We guarantee you won't find better service anywhere in the industry.

\*subject to availability and conditions

## Europe's leading Test Equipment Hire Specialist



LAB NO. 0535



Nationwide Low Call 0333 6000 600

Online: [www.inlec.com](http://www.inlec.com)

Inlec UK Ellerbeck Way, Stokesley Business Park, Stokesley N Yorkshire TS9 5JZ United Kingdom



CERT. NO. GB93/1773



Accredited Contractor