

EUROPE'S LARGEST SELECTION OF TEST & MEASUREMENT EQUIPMENT FOR HIRE

**INLEC.COM**

# DATASHEET



Nationwide Low Call  
**0333 6000 600**

**WHY BUY**  
WHEN YOU CAN HIRE

# SBS-8400 Battery Capacity Tester with Monitoring

10–300 Vdc, 0–120 Amp Constant Current Load Bank with Wireless Data Logging



The SBS-8400 was designed as an improved version of the popular Torkel 840™ load tester. The SBS-8400 has similar discharging capabilities as the Megger Torkel 840™\*, however it has the advantage of having a user-friendly touch screen menu and a built-in data monitoring/acquisition system complete with wireless modules and software.

## Benefits

- Wireless modules are easy to hook up and eliminate hundreds of feet of signal wire
- Each module can record the real-time voltage of up to four individual cells or multi-cell blocks
- While testing, real-time data is visible on unit's 5.7" color screen or through a laptop
- Unique because it has adjustable, automatic stop points – the unit can automatically stop the test if a cell or entire string falls below a user-set voltage
- Settings can be changed during a discharge test (current, stop time, stop voltage, etc.) without stopping the test
- Safety – tests can be done without a technician on site and without danger of over-discharging an individual cell or the entire system
- Download test results via USB flash drive and export reports, including individual cell voltages and graphs



Online monitoring function

## Features

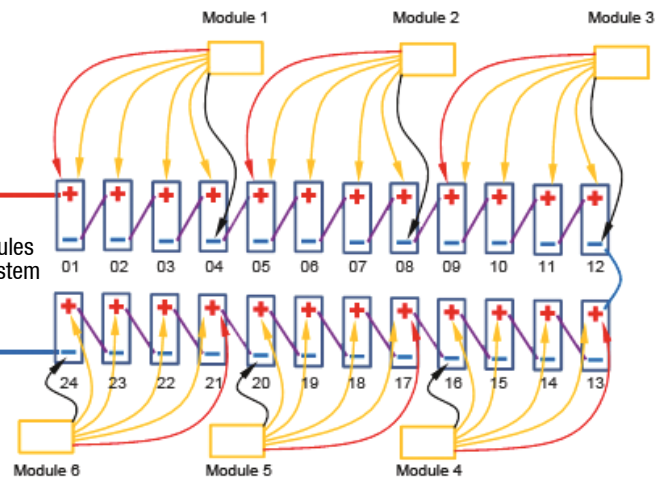
- Wide voltage and current range: 10–300 Vdc / 0–120 Amps
- Can be paralleled with other load bank to increase draw up to 600Amps (optional 600Amp DC clamp required for monitoring)
- 5.7 in. LCD touch screen for easy operation
- View test data in real time on screen or with laptop via RS232
- Up to 30 preset tests can be programmed into the unit
- Selectable discharge mode: constant current/power/resistance
- 4 adjustable stop points and multiple alarm designs to control the discharge process intelligently
  - Low system voltage: 0–250 Vdc
  - Discharge time: 0–99 Hour 99 Min
  - Discharge capacity: 0–9999 Ah
  - Low cell voltage: 0–15.00 V
- Download data after discharge to USB drive
- PC software for capacity evaluation and report generation

## Applications

- Telecommunications
- Utility
- UPS
- Battery manufacturing
- Industrial maintenance
- Critical power
- Data center



Example of how the wireless modules would be installed on a 48 Vdc system consisting of qty. (24) 2 volt cells



Video available at [www.sbsbattery.com/videos](http://www.sbsbattery.com/videos)

\*SBS is not related to, or affiliated with, Megger or the Torkel 840™ unit.

## Specifications

DC Volt Range	10–300 Vdc
DC Current Range	10–15 / 150–300 Vdc: 0–60 Amps
	15–150 Vdc: 0–120 Amps
Accuracy & Resolution	±1.0%, 0.1Amp
Display	5.7" LCD Color Touch Screen
Power Supply	110 Vac, 60 Hz
Communications Port	USB / RS232
Internal Memory	8MB Flash
Size (main unit)	9.1" x 14.6" x 26.4"; 53 lbs.
Size (with case/acc.)	11.1" x 25.2" x 29.6"; 93 lbs.

## Includes

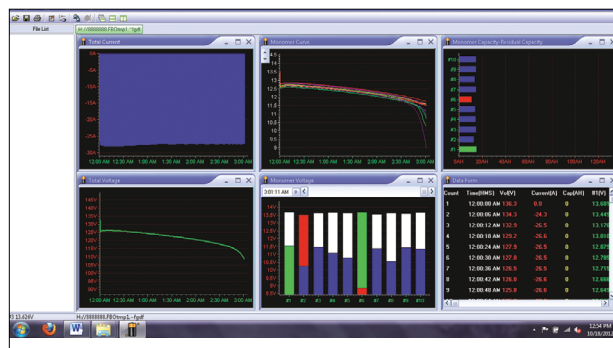
- Main unit
- 6 ft. DC cable set (pos. & neg.)
- 3 ft. AC cable
- RS232 wire
- 2GB USB disk
- Case with wheels
- PC analysis software
- Instruction manual



Portable packing case included

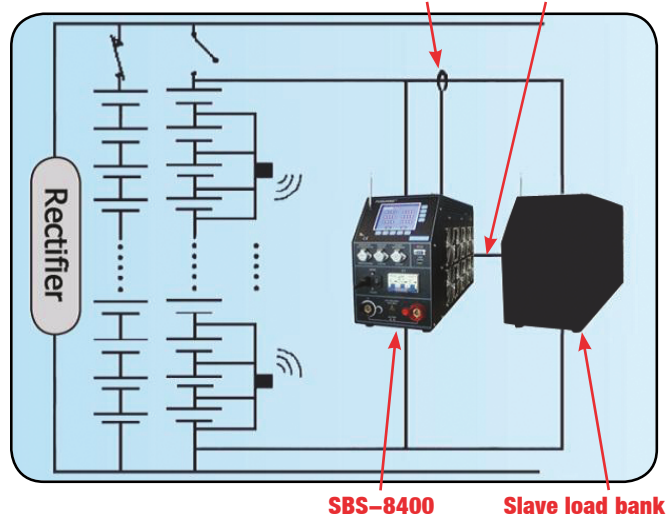
## Software

The SBS-8400 utilizes a highly analytical software interface that allows for custom programming of discharge parameters. Its versatile user-interface makes set up and operation of tests an easy task with very little operator action required. Powerful analysis software collects discharge data and stores it, where it can then be generated into a variety of customized reports. Unlike basic load banks, the SBS-8400 is a high-tech solution to easy, efficient collection of data and generation of records for archiving.



**DC Clamp**  
P/N 8400-600A

**Slave Cable**  
P/N 8400-SLAVE-CABLE



**SBS-8400** **Slave load bank**

## Paralleling Load Banks

The SBS-8400 has a 0–120 Amp current range; however it is possible to parallel additional load banks (almost all models will work) with the SBS-8400 to increase the current.

With the optional P/N 8400-600A DC clamp the user can discharge up to 720Amps and the SBS-8400 will monitor the total DC current being drawn by up to three load banks in parallel.

## Accessory Ordering Information

Part No.	Description
MODULE-1.2/2-25	1.2/2V Wireless module kit w/ case Qty. 25 (+2 spare)*
MODULE-1.2/2-30	1.2/2V Wireless module kit w/ case Qty. 30 (+2 spare)*
MODULE-2/6/12-15	2/6/12 Wireless module kit w/ case Qty. 15 (+2 spare)*
MODULE-2/6/12-30	2/6/12 Wireless module kit w/ case Qty. 30 (+2 spare)*
8400-600A	600 DC Current Clamp
8400-SLAVE-CABLE	For operating in parallel with load banks of same voltage range
BCT110/220-750	750 Watt Voltage Transformer 110/220 Vac 50/60 Hz

## Ordering Information

Part No.	Description
SBS-8400	0–300 Vdc, 0–120 Amp load bank



# INLEC, supporting you to deliver a world class service, every day, in every sector ...



## OUR COMMITMENT TO YOU

### A wealth of knowledge and experience.

You can take advantage of expert advice to ensure you get the best, most appropriate and cost effective equipment for the job. We supply a wide variety of industries, so if there is another way to do the job or save you time and money we'll pass on the benefit of our experience for free.

### Honest advice, just a phone call away.

If we don't have a particular item, rather than hiring you something that won't do the job, we would rather direct you to an alternative supplier. You will always be provided with full instructions and if you still need help, call our technical team on Nationwide Low Call 0333 6000 600. Our aim is to save you time, frustration and money.

### Top quality equipment from major manufacturers.

With Inlec you'll get the most accurate, reliable and well-maintained equipment available. Prices are regularly reviewed to ensure you always enjoy the best value for money. We have made a significant investment in test equipment so we ensure that it's well packed to minimise damage and delay.

### We really do listen to you.

You won't waste your time contacting Inlec. Every request for equipment is logged and carefully considered. Listening to our customers helps keep our product range up to date and relevant. If you are unhappy about any aspect of our service please let us know so we can put it right.

## YOUR 5 WAY GUARANTEE

### 1 GUARANTEE SAME DAY DESPATCH

We understand why prompt delivery is important to you. So, if we confirm your order before 3pm, you are guaranteed same day despatch.

### 2 OUR PRICE GUARANTEE

Inlec guarantee you real value for money. Our price match policy is simple - if you can hire the same product for less elsewhere, we guarantee to match that price and reduce it by a further 10% of the difference - and still deliver our industry leading technical and customer support.

For full details check our price-match guarantee online

### 3 TOP QUALITY GUARANTEED

All equipment is thoroughly checked prior to dispatch to ensure you receive it in full, safe working order. Your shipment will be securely packed and include manufacturer's instructions, accessories or consumables and a valid calibration certificate where appropriate. In addition, Inlec offer a 24 hour replacement service if you decide the equipment is not suitable for your application\*.

### 4 FRIENDLY, KNOWLEDGEABLE ADVICE GUARANTEED

Inlec are happy to provide you with free advice, from an unbeatable team of experienced, knowledgeable and friendly engineers and hire experts.

### 5 YOUR GUARANTEE OF THE BEST CUSTOMER SERVICE

Throughout your hire we will work hard to ensure you enjoy the very best in support and service from Inlec. We guarantee you won't find better service anywhere in the industry.

\*subject to availability and conditions

## Europe's leading Test Equipment Hire Specialist



Nationwide Low Call **0333 6000 600**  
Online: **www.inlec.com**

Inlec UK Ellerbeck Way, Stokesley Business Park, Stokesley N Yorkshire TS9 5JZ United Kingdom

