

EUROPE'S LARGEST SELECTION OF TEST & MEASUREMENT EQUIPMENT FOR HIRE

INLEC.COM

DATASHEET



Nationwide Low Call
0333 6000 600

WHY BUY
WHEN YOU CAN HIRE

DSM200 Digital Micro-Ohmmeter



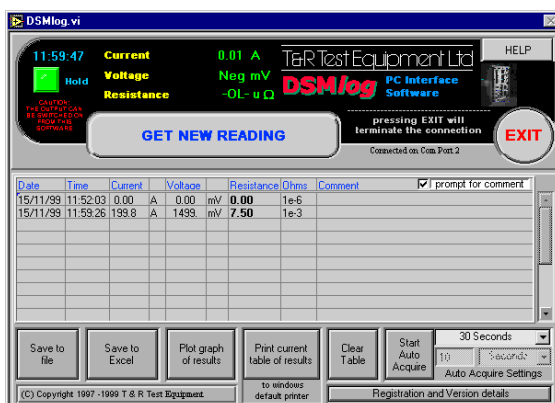
Features

- 0-10A and 0-200A DC test current
- 0.1 $\mu\Omega$ resolution
- mV, A, and $\mu\Omega$ displayed simultaneously
- Direct Ohms reading at any current
- Large back-lit liquid crystal display
- Thermal and over-current protection
- Compact and portable
- Isolated RS232 interface for printer or PC
- Triple supply voltage
- Microprocessor controlled

T&R Test Equipment is a market leader in the field of high current micro-ohmmeters, manufacturing durable, accurate and user friendly units. The DSM200 is a high current micro-ohmmeter suitable for measuring very low resistances in a wide range of applications. The unit is equally suited to commissioning, maintenance, and production line environments. Contact resistances in circuit breakers, switch panels, isolators, and busbar joints are all easily and safely measured.

The back-lit display on the DSM200 is bright and clear with a wide viewing angle. The results of a test can be seen here as they appear on the display of the unit, showing current, sense voltage and resistance

The DSM200 is simple to operate, only requiring the user to switch the output on and set the test current. Selection of all ranges is fully automatic, and current, voltage and resistance are displayed simultaneously at all times. The resistance is calculated from the test current and sense voltage, and there is no need to set an exact test current to guarantee an accurate test result. To assist the user, all readings are held on the display when the output is switched off.



Connecting the DSM200 to a PC running the optional DSMlog software adds data capture and reporting functions to the unit, allowing test results to be exported directly to Excel or saved to a file. All results are time stamped, and a comment may be added to each test. Data capture can be controlled from the PC, and the resistance of a test object can be monitored over a period of time.

Alternatively, connecting a printer allows all of the test parameters to be printed automatically whenever the reading is held.



T&R Test Equipment Ltd

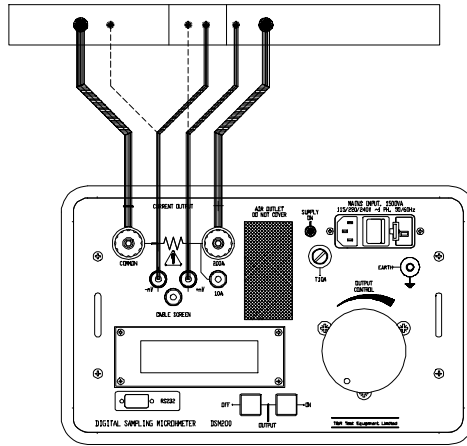


Example Application: Testing Busbar Joint Resistance

Testing the joint resistances of a busbar using the DSM200 is a simple task. Before undertaking any testing, always ensure that power to the object under test is **OFF** and the object is earthed. The DSM200 should also be earthed.

With the output of the DSM200 off, connect the DSM200 output cables to the busbar, ensuring that all joint resistances to be measured are included in the circuit.

Connect the sense leads to the first joint to be measured, and switch the output of the DSM200 on. Increase the current to



the desired level, and switch the output off. The readings will be held on the display.

Move the sense leads to the next joint (shown dotted on the diagram on the left), and switch the output of the set on and off to measure the resistance of the joint.

The process is even simpler if the optional DSM200 printer or a PC and DSMlog software is used. In this case the results are printed out or logged to the PC every time the reading is held by pressing the off pushbutton.

DSM200 Specification

Outputs

The DSM200 has two outputs. The 200A output is variable between zero and 200Adc. The 10A output is filtered and has a ripple of less than 2% at 10A output current.

Range	Output current	No load voltage	Full load voltage
200A	0-200Adc	0-6.0Vdc	0-3.4Vdc
10A smoothed	0-10Adc	0-6.0Vdc	0-2.5Vdc

The DSM200 main output is rated at 200A for 5 minutes, 100A for 15 minutes, and 50A continuously. An off time of 15 minutes must be allowed after any of the above test times. These ratings are based on an ambient temperature of 25°C.

Protection and Safety

The unit is protected by electronic over current and duty cycle trips on the output, thermal trips on the power components, and fuses on the input and regulator. An earth terminal is provided for connection to a local earth.

The unit is designed to comply with BSEN61010, and is CE marked.

Supply Requirements

240V±10% 1 phase 50/60Hz. 1000VA Max.

220V±10% 1 phase 50/60Hz. 1000VA Max.

115V -6% to +10% 1 phase 50/60Hz. 1000VA Max.

Temperature Range

Storage -20°C to 60°C Operating 0°C to 45°C

Accessories

Spare fuses, supply lead, operating manual

Optional Accessories

Output lead set (3m, 5m, 8m, 10m available)

DSM200 printer

DSMlog software

Lead set extension

100μΩ shunt

Metering

All metering on the unit is fully auto-ranging, selecting from four current ranges and three voltage ranges. The maximum voltages shown are peak values, and the maximum voltage that may be measured will be reduced if the test object is inductive. The resistance range is chosen from the current and voltage ranges as shown in the table below.

200A Output

	20.00A	200.0A
40.00mV	2000μΩ	200.0μΩ
400.0mV	20.00mΩ	2000μΩ
4000mV	200.0mΩ	20.00mΩ

10A Output

	1.000A	10.00A
40.00mV	40.00mΩ	4000μΩ
400.0mV	400.0mΩ	40.00mΩ
4000mV	4.000Ω	400.0mΩ

The maximum resistance that can be measured by the DSM200 at 200A is 17mΩ, increasing to 4Ω at a test current of 1A. All readings are held on the display when the output is switched off.

The current and voltage ranges have a metering accuracy of 0.6% of reading +5 digits, and the ohms ranges have an accuracy of 1.2% of reading + 10 digits over the range 1-200A.

Mechanical Specifications

Dimensions 340 x 230 x 330mm

Weight 21.4kg

Optional Lead Set Specifications

An optional output lead set is available to complement the DSM200. The standard version is 3 metres long and includes two 25mm² high current leads terminated in copper battery clips and a sense lead terminated in copper crocodile clips. The lead set is also available in lengths of 5m, 8m, and 10m.

Lead set weight 2.7kg (3m)

INLEC, supporting you to deliver a world class service, every day, in every sector ...



OUR COMMITMENT TO YOU

A wealth of knowledge and experience.

You can take advantage of expert advice to ensure you get the best, most appropriate and cost effective equipment for the job. We supply a wide variety of industries, so if there is another way to do the job or save you time and money we'll pass on the benefit of our experience for free.

Honest advice, just a phone call away.

If we don't have a particular item, rather than hiring you something that won't do the job, we would rather direct you to an alternative supplier. You will always be provided with full instructions and if you still need help, call our technical team on Nationwide Low Call 0333 6000 600. Our aim is to save you time, frustration and money.

Top quality equipment from major manufacturers.

With Inlec you'll get the most accurate, reliable and well-maintained equipment available. Prices are regularly reviewed to ensure you always enjoy the best value for money. We have made a significant investment in test equipment so we ensure that it's well packed to minimise damage and delay.

We really do listen to you.

You won't waste your time contacting Inlec. Every request for equipment is logged and carefully considered. Listening to our customers helps keep our product range up to date and relevant. If you are unhappy about any aspect of our service please let us know so we can put it right.

YOUR 5 WAY GUARANTEE

1 GUARANTEE SAME DAY DESPATCH

We understand why prompt delivery is important to you. So, if we confirm your order before 3pm, you are guaranteed same day despatch.

2 OUR PRICE GUARANTEE

Inlec guarantee you real value for money. Our price match policy is simple - if you can hire the same product for less elsewhere, we guarantee to match that price and reduce it by a further 10% of the difference - and still deliver our industry leading technical and customer support.

For full details check our price-match guarantee online

3 TOP QUALITY GUARANTEED

All equipment is thoroughly checked prior to dispatch to ensure you receive it in full, safe working order. Your shipment will be securely packed and include manufacturer's instructions, accessories or consumables and a valid calibration certificate where appropriate. In addition, Inlec offer a 24 hour replacement service if you decide the equipment is not suitable for your application*.

4 FRIENDLY, KNOWLEDGEABLE ADVICE GUARANTEED

Inlec are happy to provide you with free advice, from an unbeatable team of experienced, knowledgeable and friendly engineers and hire experts.

5 YOUR GUARANTEE OF THE BEST CUSTOMER SERVICE

Throughout your hire we will work hard to ensure you enjoy the very best in support and service from Inlec. We guarantee you won't find better service anywhere in the industry.

*subject to availability and conditions

Europe's leading Test Equipment Hire Specialist



LAB NO. 0535



Nationwide Low Call 0333 6000 600

Online: www.inlec.com

Inlec UK Ellerbeck Way, Stokesley Business Park, Stokesley N Yorkshire TS9 5JZ United Kingdom



CERT. NO. GB93/1773



Accredited Contractor