

EUROPE'S LARGEST SELECTION OF TEST & MEASUREMENT EQUIPMENT FOR HIRE

**INLEC.COM**

# DATA-SHEET



Nationwide Low Call  
**0333 6000 600**

**WHY BUY**  
WHEN YOU CAN HIRE

## Fluke VR1710 Voltage Quality Recorder

### Technical Data



The Fluke VR1710 is a single-phase, plug-in voltage quality recorder. An extremely easy-to-use solution for detecting and recording voltage quality problems, it allows for immediate action and less downtime. The Fluke VR1710 satisfies the needs of maintenance and facilities management personnel in industrial, utilities, and large service organizations where reliable voltage quality is essential to the operation of the business. Voltage quality parameters including RMS average, transients, flicker, and harmonics up to the 32<sup>nd</sup> are recorded using a user-selected average period from 3 seconds to 10 minutes.

- **Fast and easy recording of voltage trends, dropouts, and power quality** – Easily pinpoint the root cause of voltage problems
- **Extremely easy to use** – Plug directly into the mains power socket and record
- **Continuous recording of all values with no gaps** – Save testing time by getting the whole picture with one instrument that records both events and voltage
- **Clear graphical summary of data and quick overview of key power quality parameters** – Take the guesswork out of diagnosing voltage quality problems
- **Min, Max, Average RMS values (1/4 cycle) with time stamps** – quickly see what happened and when
- **Actual transient display (>100 µs) with time stamp** – Quickly identify issues with included graphical software
- **Flicker according to EN 61000-4-15, individual harmonic and THD values with trends** – Easily identify if the problem is power quality or equipment related
- **Statistical analysis of voltage event** – reduces analysis time by tracking event quantities and magnitudes
- **Includes PowerLog software package for quick download, analysis, and automatic reporting** – Save time by generating reports automatically with pre-set templates

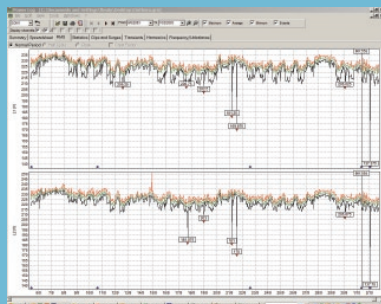
## Applications

- **Voltage recording** – monitors and records supply voltage; measures RMS average, minimum and maximum values, and checks whether the socket outlet is providing voltage within tolerance.
- **Distortion measurement** – measure frequency and harmonics; check whether the distorting loads (UPS systems, drives, etc.) are affecting your other equipment.
- **Flicker measurement** – quantify the affects of switching loads on lighting systems.
- **Capture voltage transients** – capture those intermittent, momentary events that may be affecting your equipment; the full waveform is captured with date, timestamp, and duration.

## General specifications

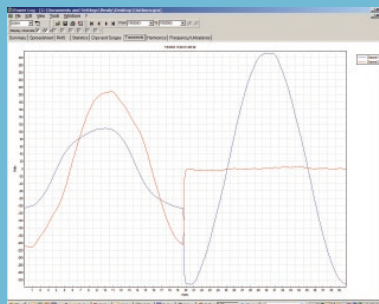
Features	Fluke VR1710
Operating voltage	70 V to 300 V
Min/Max/Avg RMS value	Resolution 0.125 V
Number of events	175,000
Dips/Interruptions	Yes
Time resolution	5 ms
Voltage resolution	0.125 V
Over-voltages	Yes
Frequency	Yes
Harmonics measurement	EN 61000-4-7 (up to 32 <sup>nd</sup> )
Flicker measurement	EN 61000-4-15
Number of recording channels	1 Phase to Neutral 2 Phase/Neutral to Ground
Recording time	1 day to 339 days depending on average time from 1 second to 20 minutes
Transients	Yes
Frequency range	50 Hz ± 1 Hz and 60 Hz ± 1 Hz
Safety category rating	CAT II 300 V

## PowerLog software



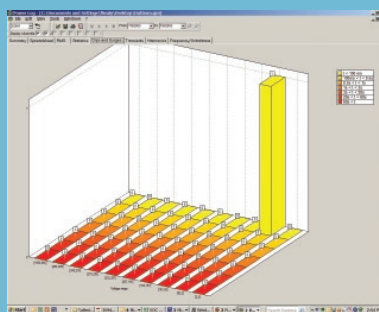
**PowerLog Setup** – Simple set up of internal clock, logging periods and intervals with default values for quick results.

**PowerLog View** – Data presentation showing RMS voltage and harmonic trends, actual transients, summary information and statistics in accordance with EN50160.



Transient measurement.

**Actual transient display (> 100 µs) with time stamp** – Quickly identify issues with included graphical software.



Voltage dip measurement.

**Statistical analysis of voltage event** – reduces analysis time by tracking event quantities and magnitudes.

## Ordering information

**VR1710 Voltage Quality Recorder**

**Includes:**

Plug-in Fluke VR1710, USB cable, PowerLog software CD, universal power cord adapters

**Fluke. Keeping your world up and running.®**

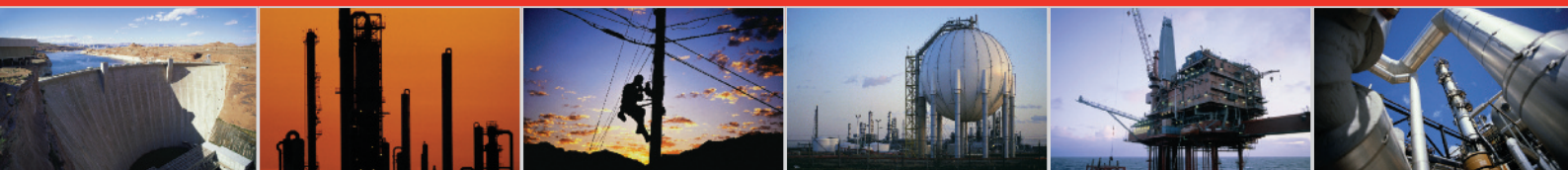
**Fluke Corporation**  
PO Box 9090, Everett, WA USA 98206

**Fluke Europe B.V.**  
PO Box 1186, 5602 BD  
Eindhoven, The Netherlands

**For more information call:**  
In the U.S.A. (800) 443-5853 or  
Fax (425) 446-5116  
In Europe/M-East/Africa +31 (0) 40 2675 200 or  
Fax +31 (0) 40 2675 222  
In Canada (800)-36-FLUKE or  
Fax (905) 890-6866  
From other countries +1 (425) 446-5500 or  
Fax +1 (425) 446-5116  
Web access: <http://www.fluke.com>

©2007 Fluke Corporation.  
Specifications subject to change without notice.  
Printed in U.S.A. 9/2007 3094014 D-EN-N Rev A

# INLEC, supporting you to deliver a world class service, every day, in every sector ...



## OUR COMMITMENT TO YOU

### A wealth of knowledge and experience.

You can take advantage of expert advice to ensure you get the best, most appropriate and cost effective equipment for the job. We supply a wide variety of industries, so if there is another way to do the job or save you time and money we'll pass on the benefit of our experience for free.

### Honest advice, just a phone call away.

If we don't have a particular item, rather than hiring you something that won't do the job, we would rather direct you to an alternative supplier. You will always be provided with full instructions and if you still need help, call our technical team on Nationwide Low Call 0333 6000 600. Our aim is to save you time, frustration and money.

### Top quality equipment from major manufacturers.

With Inlec you'll get the most accurate, reliable and well-maintained equipment available. Prices are regularly reviewed to ensure you always enjoy the best value for money. We have made a significant investment in test equipment so we ensure that it's well packed to minimise damage and delay.

### We really do listen to you.

You won't waste your time contacting Inlec. Every request for equipment is logged and carefully considered. Listening to our customers helps keep our product range up to date and relevant. If you are unhappy about any aspect of our service please let us know so we can put it right.

## YOUR 5 WAY GUARANTEE

### 1 GUARANTEE SAME DAY DESPATCH

We understand why prompt delivery is important to you. So, if we confirm your order before 3pm, you are guaranteed same day despatch.

### 2 OUR PRICE GUARANTEE

Inlec guarantee you real value for money. Our price match policy is simple - if you can hire the same product for less elsewhere, we guarantee to match that price and reduce it by a further 10% of the difference - and still deliver our industry leading technical and customer support.

For full details check our price-match guarantee online

### 3 TOP QUALITY GUARANTEED

All equipment is thoroughly checked prior to dispatch to ensure you receive it in full, safe working order. Your shipment will be securely packed and include manufacturer's instructions, accessories or consumables and a valid calibration certificate where appropriate. In addition, Inlec offer a 24 hour replacement service if you decide the equipment is not suitable for your application\*.

### 4 FRIENDLY, KNOWLEDGEABLE ADVICE GUARANTEED

Inlec are happy to provide you with free advice, from an unbeatable team of experienced, knowledgeable and friendly engineers and hire experts.

### 5 YOUR GUARANTEE OF THE BEST CUSTOMER SERVICE

Throughout your hire we will work hard to ensure you enjoy the very best in support and service from Inlec. We guarantee you won't find better service anywhere in the industry.

\*subject to availability and conditions

## Europe's leading Test Equipment Hire Specialist



LAB NO. 0535



Nationwide Low Call 0333 6000 600

Online: [www.inlec.com](http://www.inlec.com)

Inlec UK Ellerbeck Way, Stokesley Business Park, Stokesley N Yorkshire TS9 5JZ United Kingdom



CERT. NO. GB93/1773



Accredited Contractor