

EUROPE'S LARGEST SELECTION OF TEST & MEASUREMENT EQUIPMENT FOR HIRE

INLEC.COM

DATA-SHEET



Nationwide Low Call
0333 6000 600

WHY BUY
WHEN YOU CAN HIRE

ThermaCAM™ P65

The professional thermographers choice



- EXTREMELY HIGH THERMAL SENSITIVITY (0.08°C)
- UNPARALLELED IMAGE QUALITY (320 x 240 PIXELS)
- INFRARED AND VISUAL IMAGE
- AUTOFOCUS
- TEXT AND VOICE COMMENTS
- BLUETOOTH
- USEABLE IN ALL WEATHER CONDITIONS (IP 54)
- RADIOMETRIC JPEG IMAGE STORAGE
- A WIDE RANGE OF ACCESSORIES AND LENSES
- COMPATIBLE WITH THERMACAM™ REPORTER™ SOFTWARE



The standard for
infrared camera systems






A tool that's ahead of its time. Designed by FLIR Systems... and its customers

Over the last years, more and more predictive maintenance professionals have become aware of the advantages of using infrared cameras in their predictive maintenance programs. As a result, the market for infrared has grown considerably.

As the world leader in infrared camera systems, FLIR Systems has designed and produced the ultimate infrared camera, based on the needs and wishes expressed by its customers.

The result is FLIR Systems' ThermaCAM™ P65: the perfect choice for maintenance professionals who realize that infrared imaging and measurement can save their companies millions each year. The P65 features everything you need to make well-informed maintenance decisions.

- Outstanding image quality
- Precision non-contact temperature measurement
- Visual and thermal imaging
- Text and voice annotation
- Bluetooth technology 
- Auto-focus
- Ergonomic, lightweight and portable
- Wireless communication
- High speed image download
- Fully radiometric JPEG storage
- Burst and AVI recording
- Software for professional inspection reporting

The ThermaCAM P65 is a powerful infrared inspection system, ergonomically designed to maximize the efficiency and productivity of the professional thermographer.

Find out what you can do with the ThermaCAM P65, and discover that this is the new standard for infrared cameras.

ERGONOMIC AND RUGGED DESIGN

The ThermaCAM™ P65 has been designed in cooperation with maintenance professionals who use an infrared camera several hours a day. This has led to a system that is not only very user-friendly but also extremely light and easy to carry. Including battery and LCD display, the ThermaCAM P65 weighs less than 2 kg, making it the lightest full-featured infrared camera on the market.

Designed for use in harsh environments, the ThermaCAM P65 is built to withstand shocks (25G) and vibration (2G). It is dust- and watersplash-proof and carries the industrial IP 54 rating.

FLEXIBLE SOLUTION

No matter what the situation, the ThermaCAM P65 is always easy to handle. Look at the object through the high-resolution TFT color viewfinder, or carry the camera by its handle while viewing the infrared image on the LCD display. The camera control buttons are always right underneath your fingers.

A lamp can be connected to the camera to illuminate dark areas, e.g. when shooting visual images in-door, so that you always produce clear, high-quality visual images to document your inspections.

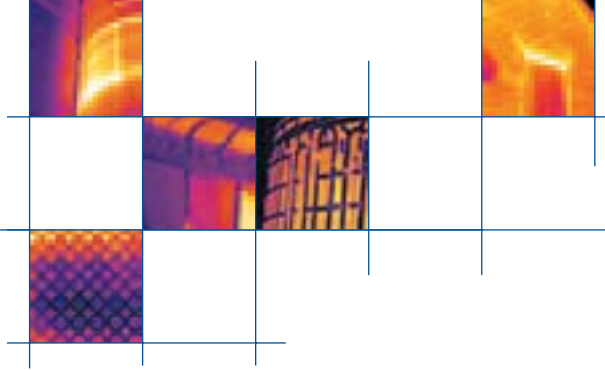
The LCD display, with all necessary remote control buttons, is detachable. It allows you to view images while the camera is positioned in hard-to-reach areas.

PRECISION TEMPERATURE MEASUREMENT EXTRAORDINARY IMAGE QUALITY

The ThermaCAM P65 delivers unmatched temperature measurement accuracy. A thermal sensitivity of 0.08°C results in clear noise-free images (320 x 240 pixels).

A low thermal sensitivity not only offers you the possibility to see the smallest of temperature changes. It also means you get crisp, very detailed high-resolution images which cannot be obtained by less sensitive cameras.





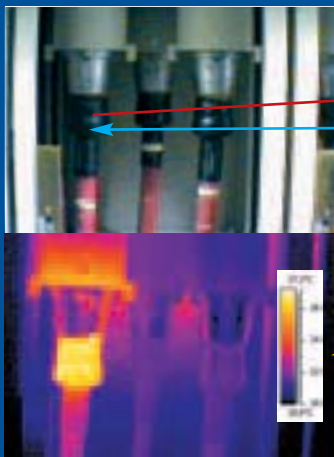
Thermal and visual images Laser pointer

ONE CAMERA

The ThermoCAM™ P65 takes high-definition 14-bit thermal images. At the same time, it records visual images with its built-in digital camera.

FLIR Systems has recognized the importance of having a visual image as a reference against the thermal image. Engineers who detect problems with the infrared camera are often not the same people as those who have to repair the defects. The ability to view the environment in which a problem is located on a visual image makes the job a lot easier. With the ThermoCAM P65, all this is done automatically. There is no need to carry separately a digital camera.

The integrated Laser LocatIR™, activated at the touch of a button, helps you to safely and quickly associate a hot spot shown on the IR image with the problem area on the physical target.



Easier and quicker inspections thanks to new powerful and useful features

SOUND AND COLOR ALARMS

The operator can set a maximum temperature in the camera. If the P65 is pointed to an object and this temperature is exceeded, the camera will produce an audible and/or visible alarm.

TEMPERATURE DIFFERENTIAL MEASUREMENT

Calculates the temperature difference between measurement points directly in the field.

AUTO HOT-SPOT

The camera will automatically indicate the temperature and the position of the hottest spot in the image.

RECORD AVI-FILES

Useful when scanning moving targets such as motors, conveyor belts, ... The camera can record up to 35 seconds of video in an AVI-file. This AVI-file can be replayed in the camera or on a PC for further analysis.

VOICE RECORDINGS WITH BLUETOOTH TECHNOLOGY

The camera can store up to 30 seconds of voice comment with each image. A Bluetooth connection allows for wireless connection between the camera and the earpiece with integrated microphone. The wireless earpiece eliminates all cable connections between the operator and the camera, increasing operator safety.

UPLOAD USER PROFILES

No need to re-set all your preferred camera settings one by one if a colleague has used the camera. You can easily upload your own favorite camera settings (color palettes, spots or areas, ...).

EVEN EASIER TEXT COMMENTS

From now on, you do not need to introduce all fields in the text comments boxes over and over again. Just copy the text comments from one image to another and change only what needs to be changed.

CUSTOMIZE COLOR PALETTES

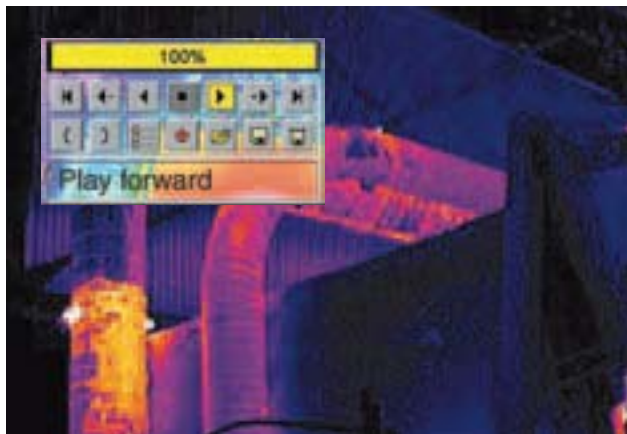
Tailor your color palettes to your applications and upload them in the camera.

LASER LOCATIR™





A Li-Ion battery provides over 2 hours of continuous operation

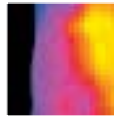


Internal RAM-memory for burst and AVI recording

The ThermoCAM™ P65 can store up to 600 images on its internal RAM-memory. Radiometric images can be stored at a rate between 25 Hz and 0.5 Hz allowing between 24 seconds and 20 minutes recording time. Ideal when scanning moving targets such as motors, conveyor belts, ...

In-camera play-back allows you to view recorded images or sequences without the need to carry a PC. The recorded data can also be easily transferred to a PC for further analysis and editing in the optionally available ThermoCAM Reporter™ software.

For those applications that do not require radiometric data, the camera can also record up to 35 seconds of moving images in an AVI-file. No special software needed. Anyone can access these AVI-files.



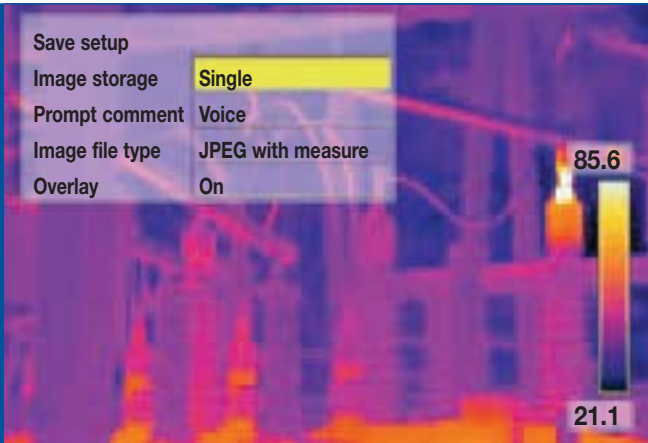
A flexible system

INTELLIGENT BATTERY SYSTEM

The battery compartment hides a Li-Ion battery. This type of battery gives the ThermoCAM™ P65 over 2 hours of continuous operation with the LCD and viewfinder running at the same time. The battery can be charged while still in the camera, in a 2-bay battery charger or in your car on the way to the next job.

The camera features smart power management functions such as a configurable sleep mode, which increases battery life considerably.





FLEXIBLE JPEG IMAGE STORAGE

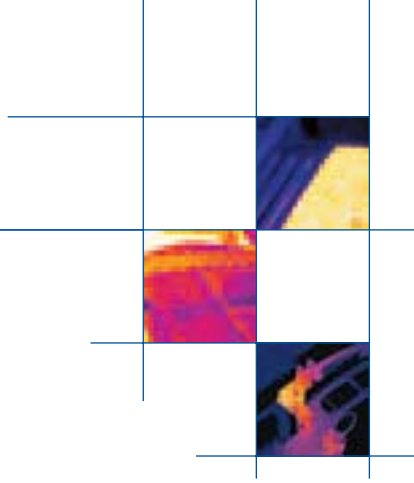
The ThermoCAM™ P65 saves images as fully radiometric JPEGs. These images, together with measurements, plus voice and/or text annotations, are stored either on a removable compact FLASH PC card (256 MB) or in the camera's FLASH memory. Images can easily be downloaded from the camera using the ThermoCAM QuickView™ software which is supplied as standard.



INTUITIVE USER INTERFACE

Control the menus inside the camera with the joystick just as you control your PC with the mouse.

Moving crosshairs, calculating temperature differences, isotherms, analyzing line profiles... you can activate all these functions easily.



EASY OPERATION

Conveniently located buttons and a joystick, control all the features of the camera and allow point-and-shoot operation. Functions like autofocus and freezing and storing images, are just a button away.

If you want to review images in the camera you can open the "image gallery". This allows you to browse through thumbnail images and easily find and select the one you need.

The laser pointer can be activated by a button underneath your fingertips.

IRDA INTERFACE

An infrared interface allows wireless connection to your PC for fast and easy downloading of data from the camera's internal memory.

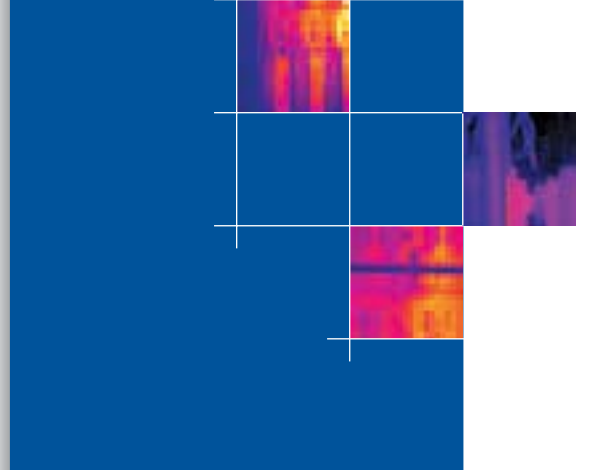
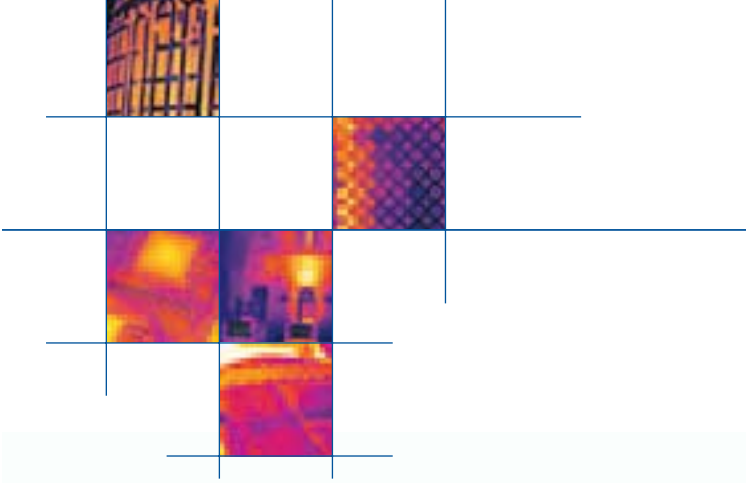


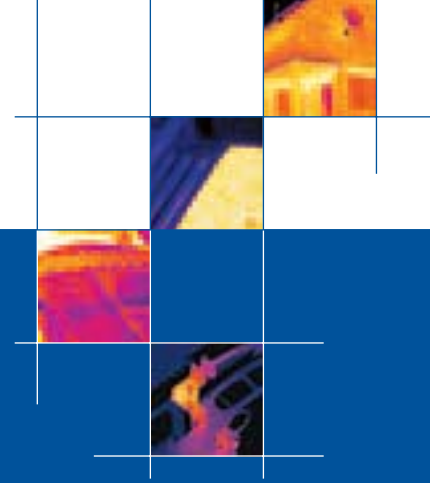
An included lamp, easily connects to the ThermoCAM P65 and allows shooting clear visual images, also in dark environments.

ThermaCAM™ P65: the new standard for infrared cameras

- 1 LCD DISPLAY WITH REMOTE CONTROL**
Detachable LCD display with user-friendly controls. Includes an innovative, durable joystick and direct-access fingertip buttons.
- 2 VIEWFINDER**
The ThermaCAM P65 incorporates a high-resolution TFT color view-finder. Ideal for outdoor use or when the LCD display is not being used.
- 3 DIRECT ACCESS BUTTONS**
For increased flexibility, the operator can program four buttons located on the side of the ThermaCAM P65. Change color palettes, emissivity settings or temperature ranges. Activate analysis tools such as spots, areas, color alarms... all at the touch of just one button.
- 4 LCD DATA PANEL**
An LCD screen gives you continuous information about the status of specific camera functions. It provides you with information on battery usage, storage capacity, communication status and more.
- 5 LASER ACTIVATOR**
A conveniently placed button activates the Laser LocatIR™ laser pointer.
- 6 OPEN INTERFACES**
Fast access to composite video connection. Direct connection to charge the battery inside the camera.
- 7 DUAL STORAGE POSSIBILITY**
JPEG images are stored on removable multimedia FLASH Cards (256 MB) or in the camera's internal memory. Images can easily be copied from the camera's internal memory to the multimedia FLASH Card.
- 8 EASY CONNECTIVITY**
USB and RS-232 connections allow fast downloading of full radiometric 14-bit JPEG images. A wireless headset with Bluetooth technology can be connected for voice annotations.







ThermaCAM™ P65

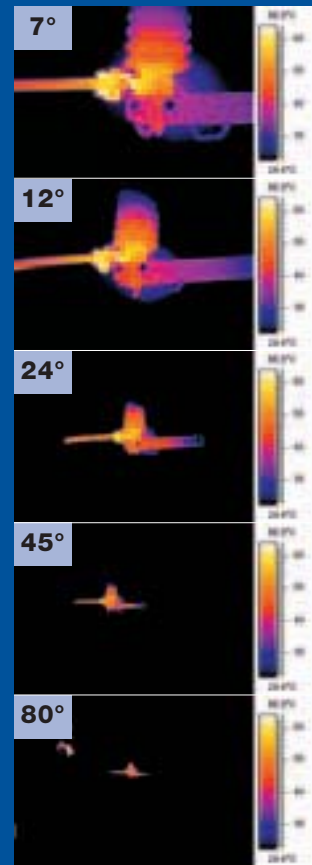
A TOOL THAT IS ADAPTABLE TO EVERY SITUATION

The ThermaCAM P65 is designed with a built-in 24° field-of-view lens. This standard optic is suitable for the majority of applications.

Sometimes however, you are too far away from the object to make a good measurement. In other cases you cannot get far enough away from the object to capture it in one image. Using an other lens can solve these problems.

The ThermaCAM P65 can be used with a complete series of accessory lenses including close-up, wide-angle, telescopic and microscopic lenses to suit the most demanding applications.

Apart from lenses, a complete series of accessories is available, including extra battery chargers, extension cables, memory cards and many more.





AUTOMATED REPORT GENERATION IN A FAMILIAR ENVIRONMENT

Full radiometric images captured by the ThermoCAM™ P65 can easily be downloaded and integrated in the new ThermoCAM Reporter™ software.

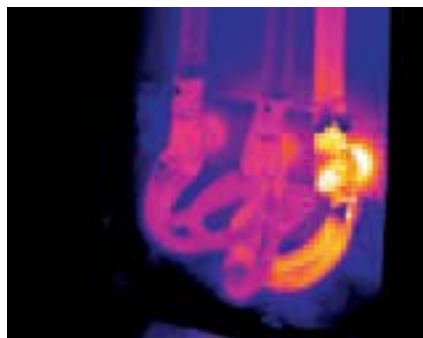
This easy-to-use Windows-based software integrates powerful image analysis and report generation functions for fast, accurate evaluation of infrared inspection results.

ThermaCAM Reporter allows you to create all your reports in Microsoft Word®. From now on, you can not only make templates for infrared inspection reports in Microsoft Word, but you can also analyze your infrared images within the same program. An extra toolbar on your screen gives you instant access to specific functions for detailed analysis in a familiar environment.

Since all images are in JPEG format and all your reports in Word format, you can easily share them with your colleagues or customers. Anyone can open and read your files, with no need to install ThermoCAM Reporter or to use special viewing software.



See it



Measure it

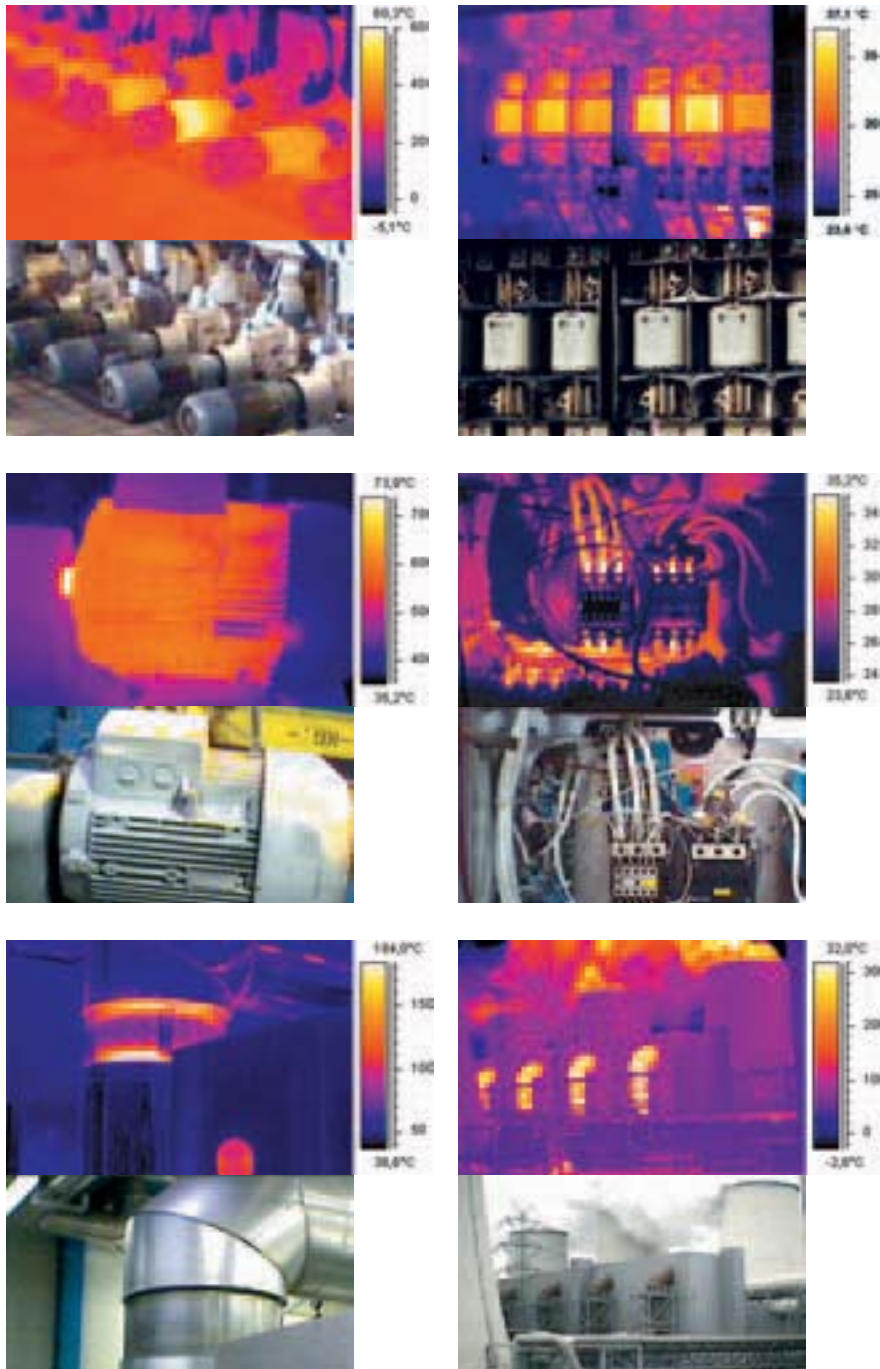


Report it



ThermaCAM™ P65, the perfect tool for EVERY situation

TEMPERATURE RANGE -40°C TO +2,000°C, THERMAL SENSITIVITY 0.08°C



TECHNICAL SPECIFICATIONS

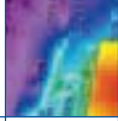
ThermaCAM™ P65 includes:

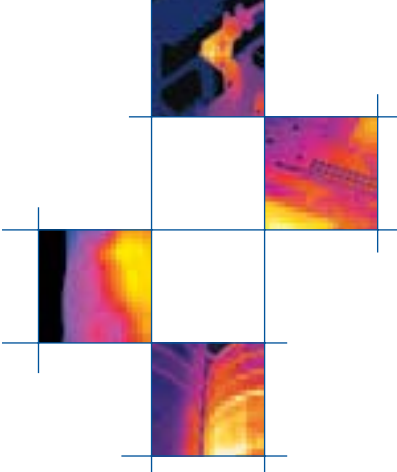
- IR CAMERA
- VISUAL CAMERA
- LAMP TO SHOOT CLEAR VISUAL IMAGES
- LASER LOCATIR™
- REMOTE CONTROL WITH LCD DISPLAY
- CARRYING CASE
- LENS CAP, SHOULDER STRAP, HAND STRAP
- MANUAL
- BATTERIES (2)
- POWER SUPPLY INCLUDING CABLE
- BATTERY CHARGER
- WIRELESS HEADSET
- VIDEO CABLE RCA-PLUG
- USB-CABLE
- FLASH CARD
- THERMACAM QUICKVIEW™ SOFTWARE



SPECIFICATIONS ARE SUBJECT TO CHANGE WITHOUT NOTICE
©Copyright 2004, FLIR Systems, Inc.
All other brand and product names are trademarks of their respective owners

IMAGING PERFORMANCE	
Thermal:	
Field of view/min focus distance	24°x18° /0.3 m (with 35 mm lens)
Spatial resolution (IFOV)	1.3 mrad
Thermal sensitivity	0.08°C at 30°C
Image frequency	50/60 Hz non-interlaced
Focus	Automatic or manual
Electronic zoom function	2,4,8 interpolating
Detector type	Focal Plane Array (FPA), uncooled microbolometer 320 x 240 pixels
Spectral range	7.5 to 13µm
Digital image enhancement	Normal and enhanced
Visual:	
Built-in digital video	640 x 480 pixels, full color
IMAGE PRESENTATION	
Video output	RS170 EIA/NTSC or CCIR/PAL composite video, IEEE-1394 FireWire DV-output
Viewfinder	Built-in, high-resolution color LCD (TFT)
External display	4" LCD with integrated remote control
MEASUREMENT	
Temperature range	-40°C to +500°C, (+40°F to +932°F), in 2 ranges Up to +1500°C (2732°F) or +2000°C (3632°F), optional
Accuracy	±2°C, ±2% of reading
Measurement mode	Spot/manual (up to 10 movable), automatic placement and reading of max. and min. temperature within area. Area (circle (5) and/or box (5), movable), isotherm (2), line profile, Delta T
Atmospheric transmission correction	Automatic, based on inputs for distance, atmospheric temperature and relative humidity
Optics transmission correction	Automatic, based on signals from internal sensors
Emissivity correction	Variable from 0.1 to 1.0 or select from listings in pre-defined materials list
Reflected ambient temperature correction	Automatic, based on input of reflected temperature
External optics/window correction	Automatic, based on input of optics/window transmission and temperature
IMAGE STORAGE	
Type	Removable Flash-card (256 MB) Built-in Flash memory (50 images) Built-in RAM memory for burst and AVI recording
File formats - Thermal	Standard JPEG, 14 bit measurement data included
File formats - Visual	Standard JPEG (including movable marker) linked with corresponding thermal image
Voice annotation of images	30 sec. of digital voice "clip" stored together with the image - Bluetooth wireless headset
Text annotation of images	Predefined text selected and stored together with the image
LENSES (OPTIONAL)	
Field of view/min focus distance	7°x5.3°/4 m (with 122 mm lens) 12°x 9°/1.2 m (with 71 mm lens) 45°x 34°/0.1 m (with 18 mm lens) 80°x 60°/0.1 m (with 9 mm lens) 200µm close-up (64 mm x 48 mm/150 mm) 100µm close-up (34 mm x 25 mm/80 mm) 50µm close-up (15 mm x 11 mm/19mm) 18µm close-up (6 mm x 4 mm/7mm)
Lens identification	Automatic
SYSTEM STATUS INDICATOR	
LCD Display	Shows status of battery and storage media. Indication of power, communication and storage modes
LASER LOCATIR™	
Classification	Class 2
Type	Semiconductor AlGaInP Diode Laser: 1mW/635 nm red
BATTERY SYSTEM	
Type	Li-Ion, rechargeable, field replaceable
Operating time	2 hours continuous operation
Charging system	in camera (AC adapter or 12 V from car) or 2 bay intelligent charger
External power operation	AC adapter 110/220 V AC, 50/60 Hz or 12 V from car (cable with Std plug: optional)
Power saving	Automatic shutdown and sleep mode (user selectable)
ENVIRONMENTAL SPECIFICATION	
Operating temperature range	-15°C to +50°C (5°F to 122°F)
Storage temperature range	-40°C to +70°C (-40°F to 158°F)
Humidity	Operating and storage 10% to 95%, non-condensing
Encapsulation	IP 54 IEC 529
Shock	Operational: 25G, IEC 68-2-29
Vibration	Operational: 2G, IEC 68-2-6
PHYSICAL CHARACTERISTICS	
Weight	2.0 kg incl. battery and top handle (includes remote control, LCD, video camera and laser) 1.4 kg excluding battery and remote control with LCD
Size	100mm x 120mm x 220 mm (3,9"x4,7"x8,7") camera body
Tripod mounting	1/4" - 20
INTERFACES	
FireWire	IEEE-1394 FireWire output (DV only)
USB / RS-232	Image (thermal and visual), measurement, voice and text transfer to PC
IrDA	Wireless communication
Remote control	Top carrying handle with video camera, Laser LocatIR and LCD





www.flir.com



FLIR SYSTEMS AB

World Wide Thermography Center
Rinkebyvägen 19
PO Box 3
SE-182 11 Danderyd
Sweden
Tel.: +46 (0)8 753 25 00
Fax: +46 (0)8 753 23 64
e-mail: sales@flir.se
www.flir.com

FLIR SYSTEMS INC.

Corporate Headquarters
16505 SW 72nd Avenue
Portland, OR 97224
USA
Tel.: +1 503 684 3731
Fax: +1 503 684 5452
www.flir.com

FLIR SYSTEMS FRANCE

18 rue Hoche
F-92130 Issy les Moulineaux
France
Tel.: +33 (0)1 41 33 97 97
Fax: +33 (0)1 47 36 18 32
e-mail: info@flir.fr
www.flir.fr

FLIR SYSTEMS GMBH

Berner Strasse 81
D-60437 Frankfurt am Main
Germany
Tel.: +49 (0)69 95 00 900
Fax: +49 (0)69 95 00 9040
e-mail: info@flir.de
www.flir.de

FLIR SYSTEMS LTD.

2 Kings Hill Avenue - Kings Hill
West Malling
Kent
ME19 4AQ
United Kingdom
Tel.: +44 (0)1732 220 011
Fax: +44 (0)1732 843 707
e-mail: sales@flir.uk.com
www.flir.com

FLIR SYSTEMS S.R.L.

Via L. Manara, 2
20051 Limbiate (MI)
Italia
Tel.: +39 02 99 45 10 01
Fax: +39 02 99 69 24 08
e-mail: info@flir.it
www.flir.it

FLIR SYSTEMS Co. LTD

Room 1613-15, Tower 2
Grand Central Plaza
138 Shatin Rural Committee Rd
Shatin, N.T. Hong Kong
Tel.: +852 27 92 89 55
Fax: +852 27 92 89 52
e-mail: flir@flir.com.hk
www.flir.com.hk

FLIR SYSTEMS AB

Uitbreidingstraat 60 - 62
B-2600 Berchem
Belgium
Tel.: +32 (0)3 287 87 10
Fax: +32 (0)3 287 87 29
e-mail: info@flir.be
www.flir.be

FLIR SYSTEMS INC.

USA Thermography Center
16 Esquire Road
North Billerica, MA 01862
USA
Tel.: +1 978 901 8000
Fax: +1 978 901 8887
e-mail: marketing@flir.com
www.flir.com

INLEC, supporting you to deliver a world class service, every day, in every sector ...



OUR COMMITMENT TO YOU

A wealth of knowledge and experience.

You can take advantage of expert advice to ensure you get the best, most appropriate and cost effective equipment for the job. We supply a wide variety of industries, so if there is another way to do the job or save you time and money we'll pass on the benefit of our experience for free.

Honest advice, just a phone call away.

If we don't have a particular item, rather than hiring you something that won't do the job, we would rather direct you to an alternative supplier. You will always be provided with full instructions and if you still need help, call our technical team on Nationwide Low Call 0333 6000 600. Our aim is to save you time, frustration and money.

Top quality equipment from major manufacturers.

With Inlec you'll get the most accurate, reliable and well-maintained equipment available. Prices are regularly reviewed to ensure you always enjoy the best value for money. We have made a significant investment in test equipment so we ensure that it's well packed to minimise damage and delay.

We really do listen to you.

You won't waste your time contacting Inlec. Every request for equipment is logged and carefully considered. Listening to our customers helps keep our product range up to date and relevant. If you are unhappy about any aspect of our service please let us know so we can put it right.

YOUR 5 WAY GUARANTEE

1 GUARANTEE SAME DAY DESPATCH

We understand why prompt delivery is important to you. So, if we confirm your order before 3pm, you are guaranteed same day despatch.

2 OUR PRICE GUARANTEE

Inlec guarantee you real value for money. Our price match policy is simple - if you can hire the same product for less elsewhere, we guarantee to match that price and reduce it by a further 10% of the difference - and still deliver our industry leading technical and customer support.

For full details check our price-match guarantee online

3 TOP QUALITY GUARANTEED

All equipment is thoroughly checked prior to dispatch to ensure you receive it in full, safe working order. Your shipment will be securely packed and include manufacturer's instructions, accessories or consumables and a valid calibration certificate where appropriate. In addition, Inlec offer a 24 hour replacement service if you decide the equipment is not suitable for your application*.

4 FRIENDLY, KNOWLEDGEABLE ADVICE GUARANTEED

Inlec are happy to provide you with free advice, from an unbeatable team of experienced, knowledgeable and friendly engineers and hire experts.

5 YOUR GUARANTEE OF THE BEST CUSTOMER SERVICE

Throughout your hire we will work hard to ensure you enjoy the very best in support and service from Inlec. We guarantee you won't find better service anywhere in the industry.

*subject to availability and conditions

Europe's leading Test Equipment Hire Specialist



LAB NO. 0535



Nationwide Low Call 0333 6000 600

Online: www.inlec.com

Inlec UK Ellerbeck Way, Stokesley Business Park, Stokesley N Yorkshire TS9 5JZ United Kingdom



CERT. NO. GB93/1773



Accredited Contractor