

# CEL-350 *d*Badge



## Personal Sound Exposure Meter



**INLEC™**  
TEST EQUIPMENT

**HIRE THIS PRODUCT NOW**

**WWW.INLEC.COM**  
FREEPHONE 0800 052 1110

## Introduction

The CEL-350 *dB*Badge is ideal for personal noise exposure measurements around the workplace. By using the latest digital technology, the CEL-350 *dB*Badge achieves new standards of performance levels in noise dosimetry.

The *dB*Badge design eliminates cables, unlike traditional dosimeters, and weighs only 68g. No other external equipment is needed to operate the CEL-350 *dB*Badge. It is simply operated by the 2 keys on the side of the instrument.

All necessary workplace noise parameters are measured and stored simultaneously, for later download to a PC, no set-ups are required and no risk of measuring the wrong parameters.

Battery life and memory capacity are sufficient to perform many consecutive shift measurements without charging or downloading. Recharging the integral NiMH battery can be achieved in 90 minutes.

A variety of mounting options are available for all types of working conditions, making the CEL-350 *dB*Badge very easy to fit to the shoulder of the employee and comfortable to wear.

## Key Features

- Compact, rugged design weighs only 68g
- No cables to damage or get in the way
- Measures and logs all workplace noise parameters
- 32 hour battery life, fully charges in 90 minutes
- Integrated display and visual exposure alarm
- Simple auto-calibration function
- Comprehensive software package

## Applications

- Measuring personal noise exposure
- Assessing and monitoring noise in the workplace
- Ensuring compliance with Workplace Noise Regulations



## Built in Display

- Display shows measurement status and data
- Unique LED action level alarm function
- 'Fuel gauge' display for memory and battery information
- 1 minute values of average and peak noise levels stored

The CEL-350 is the first compact noise badge product to be designed with a display. This internal display makes it easy to perform calibration, provides status information and shows key measured data. The *d*Badge has a unique 'fuel gauge' to display memory and battery status, ensuring the exact remaining battery and memory capacity can be viewed on the display. Also a unique feature of the *d*Badge is the alarm function. An ultra-bright LED on the *d*Badge gives a visual indication of when exposure action levels have been exceeded by flashing at different rates. These action levels can be configured via the dB35 software and used to instantly see if noise control or hearing protection measures are needed. The alarm function can be switched on or off via the *d*Badge keys.

In addition to noise exposure parameters, the time history of the noise is logged in 1 minute values of both the average noise level and the peak value for subsequent analysis of how the noise exposure has occurred. This data can be viewed and analysed via dB35 software.



'Fuel gauge' display for memory and battery information

## Simple 2 key operation

- Unique automatic calibration function
- Lockable keys and display
- Easy to mount on employees' shoulder

The CEL-350 *d*Badge is quick and easy to operate. After switching the *d*Badge on, place the calibrator over the microphone and the CEL-350 *d*Badge will auto-calibrate, and store the calibration data and time, ensuring accurate and validated results. The unique design of the windshield ensures it can be securely clipped into place to give protection in dusty environments and prevent air movement affecting the measurement. The *d*Badge can be started and the keypad locked before being placed on the shoulder of the employee. Overall, a measurement can be started within seconds of switching the *d*Badge on. At the end of the measurement run, simply unclip the *d*Badge. The data can be viewed on the easy to read graphic display to ensure the noise measurement was valid. Consecutive measurements can be taken without the need to charge or download the *d*Badge.



### Comprehensive Software

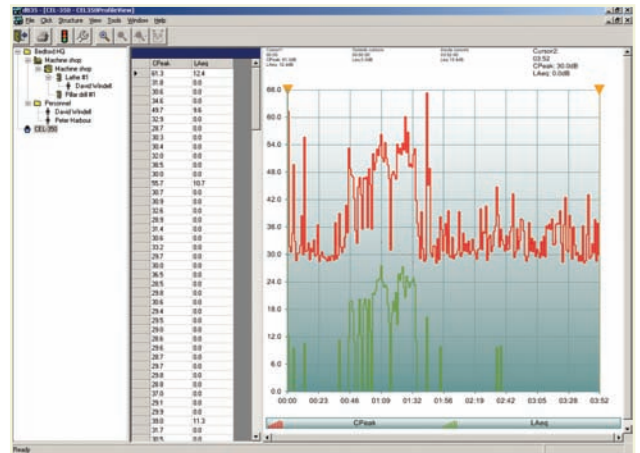
- Store results in simple tree structured database, by person, place or process etc
- Automatically colour codes results for exceeded noise action levels
- Graphical display and analysis of noise time history
- Automatic report generation
- Data can easily be exported to other applications

The *d*Badge downloads to a PC automatically using dB35 software, simply by pointing the *d*Badge at the infra-red download cable provided. Once downloaded, data can be stored under an employees' name, location or process so that a database of noise exposures can be built up.

An automatic colour coding system can be used to highlight which employees have been exposed to specific noise action levels. The time history of the noise exposure is displayed graphically and can be analysed to see when the majority of an employees' exposure has occurred.

Report templates provided with the software can be customised and saved, so that user-defined reports can be easily generated.

Data can be viewed according to different measurement protocols, either ISO (Europe) or OSHA (USA). Alternatively the data displayed can be customised to a specific users own requirements.



Graphical analysis of noise time history

Chain	Function	Profile	Site ID	Location ID	Process ID	Category	Personnel ID	Sound number	Category	CAEL	
Fluo	0	0	0	0	0	3054.7	0	0	0	2.7	145
Fluo	1	0	0	0	0	0.0	0	0	0	0.0	0
Fluo	2	0	0	0	0	0.0	0	0	0	0.0	0
Fluo	3	0	0	0	0	3054.7	0	0	0	2.7	145
Fluo	4	0	0	0	0	0.0	0	0	0	0.0	0
Fluo	5	0	0	0	0	0.0	0	0	0	0.0	0
Fluo	6	0	0	0	0	0.0	0	0	0	0.0	0
Fluo	7	0	0	0	0	0.0	0	0	0	0.0	0
Fluo	8	0	0	0	0	3054.7	0	0	0	2.7	145
Fluo	9	0	0	0	0	0.0	0	0	0	0.0	0
Fluo	10	0	0	0	0	0.0	0	0	0	0.0	0
Fluo	11	0	0	0	0	0.0	0	0	0	0.0	0
Fluo	12	0	0	0	0	0.0	0	0	0	0.0	0
Fluo	13	0	0	0	0	0.0	0	0	0	0.0	0
Fluo	14	0	0	0	0	0.0	0	0	0	0.0	0
Fluo	15	0	0	0	0	0.0	0	0	0	0.0	0
Fluo	16	0	0	0	0	0.0	0	0	0	0.0	0
Fluo	17	0	0	0	0	0.0	0	0	0	0.0	0
Fluo	18	0	0	0	0	0.0	0	0	0	0.0	0
Fluo	19	0	0	0	0	0.0	0	0	0	0.0	0
Fluo	20	0	0	0	0	0.0	0	0	0	0.0	0
Fluo	21	0	0	0	0	0.0	0	0	0	0.0	0
Fluo	22	0	0	0	0	0.0	0	0	0	0.0	0
Fluo	23	0	0	0	0	0.0	0	0	0	0.0	0
Fluo	24	0	0	0	0	0.0	0	0	0	0.0	0
Fluo	25	0	0	0	0	0.0	0	0	0	0.0	0
Fluo	26	0	0	0	0	0.0	0	0	0	0.0	0
Fluo	27	0	0	0	0	0.0	0	0	0	0.0	0
Fluo	28	0	0	0	0	0.0	0	0	0	0.0	0
Fluo	29	0	0	0	0	0.0	0	0	0	0.0	0
Fluo	30	0	0	0	0	0.0	0	0	0	0.0	0
Fluo	31	0	0	0	0	0.0	0	0	0	0.0	0
Fluo	32	0	0	0	0	0.0	0	0	0	0.0	0
Fluo	33	0	0	0	0	0.0	0	0	0	0.0	0
Fluo	34	0	0	0	0	0.0	0	0	0	0.0	0
Fluo	35	0	0	0	0	0.0	0	0	0	0.0	0
Fluo	36	0	0	0	0	0.0	0	0	0	0.0	0
Fluo	37	0	0	0	0	0.0	0	0	0	0.0	0
Fluo	38	0	0	0	0	0.0	0	0	0	0.0	0
Fluo	39	0	0	0	0	0.0	0	0	0	0.0	0
Fluo	40	0	0	0	0	0.0	0	0	0	0.0	0
Fluo	41	0	0	0	0	0.0	0	0	0	0.0	0
Fluo	42	0	0	0	0	0.0	0	0	0	0.0	0
Fluo	43	0	0	0	0	0.0	0	0	0	0.0	0
Fluo	44	0	0	0	0	0.0	0	0	0	0.0	0
Fluo	45	0	0	0	0	0.0	0	0	0	0.0	0
Fluo	46	0	0	0	0	0.0	0	0	0	0.0	0
Fluo	47	0	0	0	0	0.0	0	0	0	0.0	0
Fluo	48	0	0	0	0	0.0	0	0	0	0.0	0
Fluo	49	0	0	0	0	0.0	0	0	0	0.0	0
Fluo	50	0	0	0	0	0.0	0	0	0	0.0	0

Tree style database of results with colour coding for exceeded noise action levels

### Variety of Mounting Options

- Safe and secure
- Comfortable for the wearer
- Can be fitted to all clothing types

The choice of mounting clips, ensures that through it's combined light weight and size, the *d*Badge is both unobtrusive and comfortable to wear on the shoulder. The CEL-6351 pin clip is provided as standard; the alternative harness or crocodile clips are available for protective clothing that should not be pierced. A hard hat mount is also available.

Mounting Options:

- CEL-6351 Standard Pin Kit
- CEL-6352 Crocodile Clip Kit
- CEL-6353 Harness Kit
- CEL-6354 Hard Hat Kit



Note: CEL-6351 is supplied as standard with all CEL-350 *d*Badges

## Intelligent Fast Charging System



The CEL-6350 3-way charger with 3 *dBadges*

- Full charge gives the *dBadge* a 32 hour operating time
- Fully charges in 90 minutes
- Charger units can be linked together
- Single mains supply can supply up to 12 *dBadge* units
- Visual display of charge progress with unique 'fuel gauge'

Due to the battery technology and intelligent charging method used, the *dBadge* unit does not have to be continually on charge. The standard 3-way charger can be used to manage many *dBadge* units.

When placed on the charger, the *dBadge* will display a 'fuel gauge' which shows how much operating capacity, in hours, is currently held in the batteries. When fully charged, the blue LED on the front of the *dBadge* illuminates.

The *dBadge* does not have to be fully charged prior to use. A 30 minute charge will give an operating time of greater than 8 hours, enough for a typical working day.

A single CEL-6350 3-way charger is required. The number of charging points can be increased using the CEL-6358 3-way charger extension kit. Up to 12 *dBadge* units can be charged in this way.

## Measurement Kits

- Standard kits of 1, 2, 3, 5 and 10 *dBadge* units
- Additional *dBadges* can be added to make any quantity of kit
- Robust kit case holds up to 10 *dBadges* and accessories

*dBadge* measurement kits are available with various quantities of *dBadges* and include all items necessary for workplace noise dosimetry measurements. Each kit is complete with the appropriate number of *dBadge* units, as well as a CEL-110/2 Acoustic Calibrator, infra-red download cable, 3-way charger, power supply and dB35 software. The CEL-350 *dBadges* and the CEL-110/2 Acoustic Calibrator are supplied with calibration certificates.



A typical measurement kit

## SPECIFICATION

### Technical:

Linear operating range:	65.0 to 140.0dB RMS
Peak measurement range:	95.0 to 143.0dB Peak
Frequency weightings RMS:	A
Frequency weightings Peak:	C, A, Z (Linear)
Time weightings:	Slow, Fast & Impulse
Amplitude weightings:	Q=3 & Q=5
Selectable thresholds :	2 (70 to 90dB), selectable in 1dB steps
Selectable criterion:	1 (70 to 90dB), selectable in 1dB steps
Memory capacity:	64kB (180 Hours of measurements)
Default modes:	ISO or OSHA
Calibration information:	Calibration dates, times and levels
Security:	Lock via keys
Power supply:	Internal NiMH cells
Battery life:	32 Hours run capacity
Size mm (in):	72x47x52 (2.8x1.8x2.0) inc windshield
Weight g (oz):	68 (2.4)
Data storage:	Non-volatile, 10 years of storage
Display:	Graphic LCD 96 x 26 pixels
Output (PC):	Infra-red download cable (supplied) to dB35 software

### Applied Standards:

IEC 61252:2002 Personal Sound Exposure Meters  
ANSI S1.25:1991 Personal Noise Dosimeters

### Measured Parameters:

ISO:	$L_{Aeq}$ , $L_{Cpeak}$ , $L_{AEP,d}$ , $Pa^2Hours$
OSHA:	$L_{Aavg}$ (Q=5), $L_{Zpeak}$ , $L_{ASmax}$ , %dose (Q=5), TWA (Q=5)
General:	$L_{AFmax}$ , $L_{AFmin}$ , $L_{ASmin}$ (via dB35) $L_{A1eq}$ , $L_{A1max}$ , $L_{A1min}$ , $L_{Apeak}$
Time history:	$L_{Aeq}$ , $L_{Zpeak}$ , $L_{Cpeak}$ , $L_{Aavg}$ (Q=5) Stored as 1 minute values
Storage:	All parameters simultaneously stored

### Environmental Conditions:

In storage:	Temperature: -10 to +50°C, Humidity: 30 to 95% RH (non-condensing)
In operation:	Temperature: 0 to +40°C

Casella CEL have a continuous product improvement policy and therefore reserve the right to change the specification without notice

## INSTRUMENT KITS

CEL-350/K1	<i>d</i> Badge Measurement Kit with 1x CEL-350 and 3-way charger
CEL-350/K2	<i>d</i> Badge Measurement Kit with 2x CEL-350 and 3-way charger
CEL-350/K3	<i>d</i> Badge Measurement Kit with 3x CEL-350 and 3-way charger
CEL-350/K5	<i>d</i> Badge Measurement Kit with 5x CEL-350 and 3-way charger
CEL-350/K10	<i>d</i> Badge Measurement Kit with 10x CEL-350 and 2x 3-way chargers

Kits include: CEL-350 *d*Badge(s), CEL-110/2 Acoustic Calibrator, CEL-6355 kit case, CMC39 download cable, CEL-6357 dB35 software, CEL-6351 pin mounting kit, CEL-6350 3-way charger and 1x CEL-6358 3-way charger extension unit on CEL-350/K10, HK111 screwdriver for changing mounting clips. All kits include calibration certificates for the *d*Badge(s) and CEL-110 Acoustic Calibrator.

## ORDERING INFORMATION

CEL-350	<i>d</i> Badge Personal Sound Exposure Meter	CEL-6351	Pin mounting kit (5 pack)
CEL-6350	3-Way Charger (inc PC18 power supply)	CEL-6352	Crocodile clip mounting kit (5 pack)
CEL-6358	3-Way Charger Extension (inc C6359/0.2)	CEL-6353	Harness mounting kit (5 pack)
CEL-110/2	Class 2 Acoustic Calibrator	D8147/Z	3 point harness
CEL-6355	Kit Case for 10x <i>d</i> Badges	CEL-6356	Spare windshield assembly
CMC39	Infra-red Download Cable	C6359/0.2	Spare lead for connecting CEL-6350 to CEL-6358
CEL-90336	USB Adaptor	HK111	Spare screwdriver for changing mounting clips
CEL-6357	dB35 Software		

### CASELLA CEL

Regent House,  
Wolseley Road,  
Kempston,  
Bedford,  
MK42 7JY,  
U.K.  
Phone: +44 (0) 1234 844 100  
Fax: +44 (0) 1234 841 490  
E-mail: info@casellacel.com  
Web: www.casellacel.com

### CASELLA USA

17 Old Nashua Road,  
# 15, Amherst,  
NH 03031,  
U.S.A.  
Toll Free: +1 (800) 366 2966  
Fax: +1 (603) 672 8053  
E-mail: info@casellaUSA.com  
Web: www.casellaUSA.com

### CASELLA ESPAÑA S.A.

Polígono Európolis,  
Calle C, nº4B,  
28230 Las Rozas - Madrid,  
Spain.  
Phone: + 34 91 640 75 19  
Fax: + 34 91 636 01 96  
E-mail: online@casella-es.com  
Web: www.casella-es.com

Distributed By



Issue 1 - May 06