



# Datasheet



0370 330 6021  
[www.sunbeltrentals.co.uk](http://www.sunbeltrentals.co.uk)

## See for yourself, with real inside insight.

The Hilti PS 1000 X-Scan system detects reinforcing bars, pre- and post-tensioning tendons, metal pipes, plastic pipes, electric cables and glass-fiber cables in next to no time – even over large concrete areas. Equipped with three radar antennas, the PS 1000 scanner finds concealed objects at depths of up to 300 mm. Scan results are presented on the X-Scan display for immediate analysis or can be transferred to the PSA 100 monitor for further evaluation. Thanks to its ease of operation, on-site handling and the easily interpretable 3D images of concealed objects it produces, the Hilti PS 1000 X-Scan system simply takes non-destructive structural inspection into a new era.



### Applications

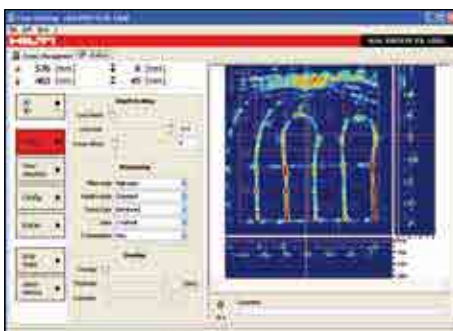
- Non-destructive inspection and detection of concealed objects in steel-reinforced and prestressed concrete structures
- Detecting metal or plastic pipes and electric cables to avoid damage when drilling
- Locating rebars for post-installed rebar connections

### Advantages

- Locates objects of various kinds in concrete structures, even beneath reinforcing mesh
- Displays a clear, real-time 2D image directly on the Hilti PS 1000 display
- Processed 2D and 3D plan view or cross-sectional images are displayed in color on the PSA 100 monitor unit for further on-the-spot evaluation of the data or printing

### Highlights

X-Scan, because it's Xtra fast. A compact, cordless system consisting of scanner, monitor and PC software. Quickly ready for use, easy to operate and featuring high memory capacity for clearly interpretable color images of the objects concealed in concrete structures, allowing immediate analysis.



Advanced software with comprehensive evaluation and analysis features for the creation of reports and documentation.

## Performance data

	PS 1000 X-Scan
Detection range	max. 300 mm, see op. instructions
Localization accuracy	± 10 mm, see op. instructions
Depth measurement accuracy	± 10 mm, see op. instructions
IP protection class	IP 54
Operating temperature range	– 10 to + 50° C
Battery life, scanner / monitor	4 h / 2 h with Li-ion battery pack
Dimensions / weight, scanner	318 x 190 x 143 mm / 2.5 kg
Dimensions / weight, monitor	292 x 208 x 65 mm / 2.3 kg

We reserve the right to make technical changes.



## Imagescan

- Scans large areas of concrete in a grid pattern
- Locates metal and plastic pipes as well as electric cables and conduits at depths of up to 300 mm in dry concrete
- Detects objects located behind reinforcing mesh
- Shows objects in a 2D or 3D plan view and cross-sectional view for immediate analysis



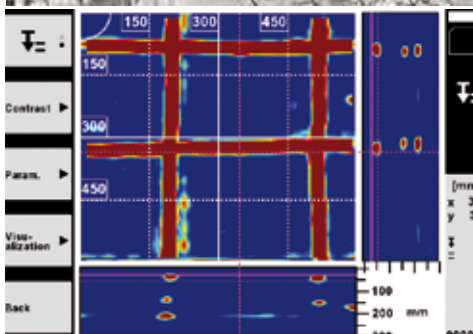
## Quickscan Detektion

- Quickly locates various objects in concrete, allowing their positions to be marked directly on the working surface

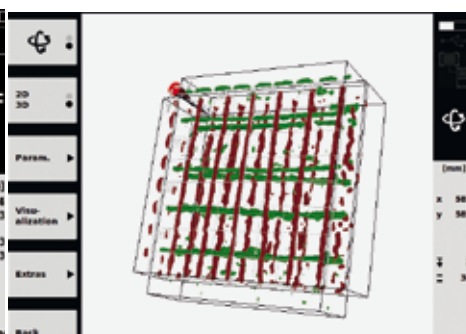


## Quickscan recording

- Scans stretches of up to 10 m in length, quickly and easily
- Shows objects in 2D or 3D plan views and cross-sectional views
- Handy extension available for easy floor scanning



2D representation of an Imagescan shown as a plan view and cross-sectional views on the PS 1000 display.



3D Imagescan (plan views, cross-sectional views) for on-the-spot visualization and analysis on the PSA 100 monitor.

**We are supporting you to deliver  
a world class service, every day,  
in every sector...**

## LOCATIONS

### LONDON, HEATHROW

#### Sunbelt Rentals UK Test & Monitoring

242-252 London Road, Staines, London TW18 4JQ

0333 122 3126

[www.sunbeltrentals.co.uk/find-a-depot/london-heathrow](http://www.sunbeltrentals.co.uk/find-a-depot/london-heathrow)

### REDCAR

#### Sunbelt Rentals UK Test & Monitoring

Unit 5 Kirkleatham Business Park, Redcar TS10 5SQ

0370 330 6021

[www.sunbeltrentals.co.uk/find-a-depot/teesside](http://www.sunbeltrentals.co.uk/find-a-depot/teesside)

### STOKESLEY

#### Sunbelt Rentals UK Test & Monitoring

2 Ellerbeck Way, Stokesley Business Park, Stokesley, North Yorkshire TS9 5JZ

01642 718 900

[www.sunbeltrentals.co.uk/find-a-depot/stokesley](http://www.sunbeltrentals.co.uk/find-a-depot/stokesley)



[www.inlec.com](http://www.inlec.com)

Order Online with Next Day  
Delivery, Online Chat & Online  
Account Management



View our trustpilot score



STOKESLEY  REDCAR

 HEATHROW

0370 330 6021  
[instrumentation@sunbeltrentals.co.uk](mailto:instrumentation@sunbeltrentals.co.uk)  
[testequipment@sunbeltrentals.co.uk](mailto:testequipment@sunbeltrentals.co.uk)  
[www.sunbeltrentals.co.uk](http://www.sunbeltrentals.co.uk)

