



Datasheet



0370 330 6021

www.sunbeltrentals.co.uk

2000 Series

Built for **speed, accuracy and performance at an affordable price**, the robust 2000 series of hand-held digital thermometers provides a range of enhanced features to meet the changing demands of both **industrial and food environments**.

The rugged 2000 Series provides precise, **stable readings and high accuracy** even in the **harshest of environments**. They are **simple to operate, fast, reliable and built to last**. In this unique range we can offer advanced features such as dual input instruments which combined with interchangeable probe options makes this series a leader in its field. Optional coloured rubber boots add protection and style to these instruments.

General Specification

Resolution:	0.1° from -199.9°C to +199.9°C -199.9°F to +392.0°F 1°C elsewhere
Ambient Operating Temperature:	-10°C to +50°C/+14°F to +122°F (ambient)
Battery Type:	Two AA or equivalent cells (not supplied)
Battery Life:	Typically 500 hours
Low Battery Check:	Symbol appears on display
Display:	12.7mm / 0.5" custom L.C.D.
Sensor Open Circuit:	Indicated by 'O-C' on display
Overrange/Underrange:	'Out' displayed
Cold Junction Compensation:	Yes
Environmental Specifications:	IP65 (IP67 optional)
Auto Switch-Off Time:	12 minutes
Dimensions:	155 x 67 x 40mm/6.1 x 2.6 x 1.6"
Weight:	180g/6.4oz



2000T Model

For other options, please contact us digitronsales@rototherm.co.uk or +44 (0)1656 740551

Key Features and Benefits

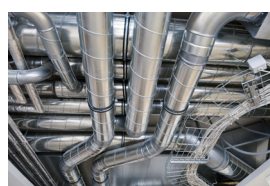
- Long battery life – typically 500 hours
- Accurate performance – 0.2% of reading
- Robust Case – Ensuring long life in demanding and harsh environments
- Selectable auto switch-off – saves on operational costs
- Automatic zero calibration – for added accuracy

Optional Extras

- 2000BT – Protective Rubber Sleeve
- Carry Case
- Various Probe Options
- Calibration Certificate

Main Applications

A **world leader** in digital thermometers, Rototherm has become the standard for accurate and reliable measurement across the following industries:



Industrial



Food & Beverage

Model Specification

Model Options	2000T <i>(Refer to IEC 60584)</i>	2006T <i>(Refer to IEC 60584)</i>	2024T <i>(Refer to IEC 751)</i>	2029T <i>(Refer to IEC 60584)</i>
Sensor Type	K	T	Pt100	K T J N R S
Connector Type	2 pin mini	2 pin mini	TCM screw	2 pin mini
°C/°F Function*			•	•
Hold Function	•	•	•	•
Range Lock			•	•
Max/Min			•	•
Averaging			•	
Differential Input				•

Instrument Accuracies (All ± 1 Digit) <i>(Excluding probe error)</i>	2000T	0.1% rdg $\pm 0.2^{\circ}\text{C}/0.4^{\circ}\text{F}$ above $-100^{\circ}\text{C}/-148^{\circ}\text{F}$ 0.5% rdg $\pm 0.2^{\circ}\text{C}/0.4^{\circ}\text{F}$ below $-100^{\circ}\text{C}/-148^{\circ}\text{F}$		
	2006T	$\pm 0.2^{\circ}\text{C}/0.4^{\circ}\text{F}$ over range -20°C to $+70^{\circ}\text{C}/-4^{\circ}\text{F}$ to $+158^{\circ}\text{F}$ $\pm 0.1\%$ rdg $\pm 0.2^{\circ}\text{C}/0.4^{\circ}\text{F}$ elsewhere		
	2024T	$\pm 0.2\%$ rdg $\pm 0.1^{\circ}\text{C}/0.2^{\circ}\text{F}$ over range -150°C to $+600^{\circ}\text{C}/-238^{\circ}\text{F}$ to $+1112^{\circ}\text{F}$		
	2029T	0.1% rdg $\pm 0.2^{\circ}\text{C}/0.4^{\circ}\text{F}$ above $-100^{\circ}\text{C}/-148^{\circ}\text{F}$ 0.5% rdg $\pm 0.2^{\circ}\text{C}/0.4^{\circ}\text{F}$ below $-100^{\circ}\text{C}/-148^{\circ}\text{F}$		
Range	2000T	-200°C to $+1350^{\circ}\text{C}/-328^{\circ}\text{F}$ to $+2462^{\circ}\text{F}$	2029T T	-200°C to $+350^{\circ}\text{C}/-328^{\circ}\text{F}$ to $+662^{\circ}\text{F}$
	2006T	-200°C to $+350^{\circ}\text{C}/-328^{\circ}\text{F}$ to $+662^{\circ}\text{F}$	2029T J	-200°C to $+350^{\circ}\text{C}/-328^{\circ}\text{F}$ to $+662^{\circ}\text{F}$
	2024T	-196°C to $+600^{\circ}\text{C}/-384.8^{\circ}\text{F}$ to $+1112^{\circ}\text{F}$	2029T N	-200°C to $+1300^{\circ}\text{C}/-328^{\circ}\text{F}$ to $+2372^{\circ}\text{F}$
	2029T K	-200°C to $+1350^{\circ}\text{C}/-328^{\circ}\text{F}$ to $+2462^{\circ}\text{F}$	2029T R & S	0°C to $+1600^{\circ}\text{C}/+32^{\circ}\text{F}$ to 2912°F

Technical Certification

- Certificate of Conformity
- Factory Test Certificate
- Factory Calibration Certificate

Export Documentation

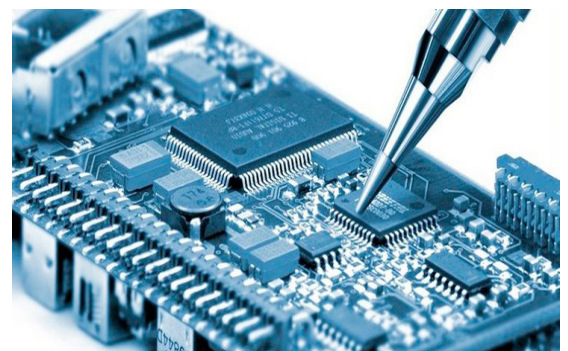
- Certificate of Origin
- EUR1
- ATR

Calibration and After-Sales Support

- Fully trained field service personnel
- Use of UKAS certified calibration equipment
- 5 day turnaround
- Fixed pricing
- Approved manufacturer parts
- Full post-service reports
- 12 month warranty



ISO9001:2015
FM11958



For more information, please contact our service team
digitronservice@rototherm.co.uk

We are supporting you to deliver
a world class service, every day,
in every sector...

LOCATIONS

LONDON, HEATHROW

Sunbelt Rentals UK Test & Monitoring

242-252 London Road, Staines, London TW18 4JQ

0333 122 3126

www.sunbeltrentals.co.uk/find-a-depot/london-heathrow

REDCAR

Sunbelt Rentals UK Test & Monitoring

Unit 5 Kirkleatham Business Park, Redcar TS10 5SQ

0370 330 6021

www.sunbeltrentals.co.uk/find-a-depot/teesside

STOKESLEY

Sunbelt Rentals UK Test & Monitoring

2 Ellerbeck Way, Stokesley Business Park, Stokesley, North Yorkshire TS9 5JZ

01642 718 900

www.sunbeltrentals.co.uk/find-a-depot/stokesley



www.inlec.com

Order Online with Next Day
Delivery, Online Chat & Online
Account Management



★ Trustpilot

View our trustpilot score



STOKESLEY  REDCAR

 HEATHROW

0370 330 6021

instrumentation@sunbeltrentals.co.uk

testequipment@sunbeltrentals.co.uk

www.sunbeltrentals.co.uk


SUNBELT
RENTALS